



American Society of Heating, Refrigerating and Air Conditioning Engineers, Inc.

Inside this issue:

President's Message	1,3
LI Chapter Officers	2
BOG Meeting Minutes	4,5
Meeting Schedule	6
LI Past Presidents	7
PAOE	7
Programs	8,9
Membership	10
YEA	10
Research Promotion	11
CTTC	12-14
Student Activities	14-16
GGAC	17,18
Easy Rider Meets Ashrae	19
March Meeting Photos	20,21
Golf Outing 2015	22-24
Fishing Trip 2015	25
Free ASHRAE Webcast	26
ASHRAE Ticket Books	26
2015 Annual Conference	27
Classifieds	28
Advertisements	29-32

President's Message

Is it safe to say we are done with the snow? I was reading some news on the latest energy saving ideas and stumbled across the changes to be implemented by the Department of Energy this July 13, 2015, which happens to be my birthday. I read with some dismay as from my humble opinion they missed the boat. These comments are just for water heater issues. They are proposing more insulation on the storage tanks. I think this will do very little as I never feel warmth coming off the present ones. Or are they thinking of the water entering at 55 degrees? Gee with the poor insulation you can suck some heat out of the room to bring it up to 72 degrees if you had no insulation on the tank. Also wouldn't the heat from the tank help heat the room. Most basements, where generally the HW heaters are, don't have heat and rely on the losses of the mechanical equipment to keep the place warm. I guess people will be throwing in some plug in electric heaters down there under the new design. Wouldn't it be better to make it mandatory to add insulation to the HW distribution piping when a new heater is installed, that is lacking in most older houses and a real loss of energy.



So why do we use electric water heaters anyway? Cause they are so cheap to run? Nope they are the most expensive. I use them sometimes because I might not want to install a chimney, might not want an open flame, no maintenance, might want a cheap 1st cost, might not have much use for the HW but it's required to have. By the way, EW heaters are 100% efficient so I wondered what the new rules would do with them. The rules state if you have a tank on them with 55 gallons or more storage you will be required to use a heat pump type. Well there goes the 1st cost savings, not to mention a need of finding a home for the outdoor unit or are we going to suck the heat out of the basement with a self-contained unit? I don't think they know why we use them sometimes.

At my home I have taken one of those inexpensive EW heaters and used it as a storage tank. I did that because the storage tanks are a lot more expensive. I disabled the heating elements and use the thermostat so there is nothing else required to buy. The previous owner used a tank after the tankless water heater that is a part of the boiler. He kept high temp HW in it and added the cold water directly to the tank. After a short time in the shower the water would run cool and not warm up again. Also there was a long time delay to get the HW to the shower on the other side of the house and one floor up. When the tank aged I set out to redesign and replace it. I moved the new tank ahead of the Boilers tankless coil and set the water temp to 90 degrees. This way the marginal sized tankless hot water coil is feed with not 55 degree makeup water but with 90 degree water making for a nice steady flow of hot water for our two showers at once! I also made my circulating loop pull the water back from the furthest point in the basement, below the bath rooms. This pulls hot water out of the tankless unit and warms the water in the tank to 90 degrees. As a re-

CHAPTER MONTHLY MEETING

DATE:	Tuesday, April14, 2015
TIME:	ANNUAL FIELD TRIP SEE PROGRAM SECTION FOR DETAILS ON PAGES 8-9
LOCATION:	SEE PROGRAM FOR DETAILS PAGES 8-9
FEES:	\$40 per person (Includes Dinner Afterwards)

Long Island Chapter Officers & Committees

ASHRAE 2014/2015 OFFICERS

POSITION	NAME	PHONE	FAX	EMAIL
President	Richard Rosner, P.E.	631.737.9170	631.737.9171	president@ashraeli.org
President-Elect	Thomas Fields, P.E., LEED AP	212.643.9055	212.643.0503	president_elect@ashraeli.org
Vice President	Charles Lesniak, P.E.	516.484.1020	516.484.0926	vice_president@ashraeli.org
Financial Secretary	Don Kane, P.E.	631.737.9170	631.737.9171	finsec@ashraeli.org
Treasurer	Andrew B. Dubel, P.E.	212.967.7651	212.967.7654	treasurer@ashraeli.org
Secretary	Richard Halley	718.269.3809	718.269.3725	secretary@ashraeli.org
Board of Governors	Lee Feigenbaum, LEED AP BD+C	212.243.2555	212.924.7148	bog1@ashraeli.org
Board of Governors	Frank Paradiso	631.632.2791	631.632.1473	bog2@ashraeli.org
Board of Governors	Ken Mueller	201.395.3761	763.231.6924	bog3@ashraeli.org
Board of Governors	Andrew Manos, LEED AP	631.632.2791	631.632.1473	bog4@ashraeli.org

ASHRAE 2014/2015 COMMITTEES

COMMITTEE	NAME	PHONE	FAX	EMAIL
Programs & Special Events	Thomas Fields, P.E., LEED AP	212.643.9055	212.643.0503	programs@ashraeli.org
Membership	Lee Feigenbaum, LEED AP BD+C	212.243.2555	212.924.7148	membership@ashraeli.org
Chapter Technology Transfer (CTTC)	Don Kane, P.E.	631.737.9170	631.737.9171	cttc@ashraeli.org
Grassroots Government Activities Committee	Charles Lesniak, P.E.	516.484.1020	516.484.0926	ggac@ashraeli.org
Newsletter Editor	Liset Cordero	212.643.9055	212.643.0503	editor@ashraeli.org
Research Promotion	Andrew Manos, LEED AP	631.632.2791	631.632.1473	rp@ashraeli.org
Historian	Andrew B. Dubel, P.E.	212.967.7651	212.967.7654	historian@ashraeli.org
Student Activities	Richard Halley	718.269.3809	718.269.3725	sa@ashraeli.org
Young Engineers in Training	Frank Paradiso	631.632.2791	631.632.1473	yea@ashraeli.org
Webmaster	Richard Rosner, P.E.	631.737.9170	631.737.9171	web@ashraeli.org
Nominating	Michael Gerazounis, P.E., LEED AP	212.643.9055	212.643.0503	nominating@ashraeli.org
Reception & Attendance	James Hanna Ken Mueller	718.269.3768 201.395.3761	718.269.3794 763.231.6924	reception@ashraeli.org
PR & Engineering Joint Council of LI	Andrew Manos, LEED AP	631.632.2791	631.632.1473	pr@ashraeli.org
2014 CRC Committee	Richard Halley	718.269.3809	718.269.3725	CRC@ashraeli.org
Golf Outing	Peter Gerazounis, P.E., LEED AP Steven Friedman, P.E., HFDP, LEED AP	212.643.9055 212.354.5656	212.643.0503 212.354.5668	golf@ashraeli.org

ASHRAE LI, P.O. Box 79, Commack, NY 11725

Editor's Note: The appearance of any technical data, editorial material, or advertisement in this set of publications does not constitute endorsement, warranty or guaranty by ASHRAE of any product, service, procedure, design, or the like. ASHRAE does not warrant that information is free from errors, and ASHRAE does not necessarily agree with any statement or opinion in this set of publications. The entire risk of the use of any information in this set of publications is assumed by the user. Statements made in this publication are not expressions of the Society or of the Chapter and may not be reproduced without special permission.

President's Message (Cont'd. from Page 1)

sult I have almost instant hot water at the showers and sinks in the bath rooms. I insulated the HW piping to not have a loss from the copper piping in between those areas. I think I am saving big time. Low temp storage sure doesn't require more insulation on my tank.

How about some sort of sediment auto dump as an idea? An easy thing to do but most people have never drained their tank to remove sediment. I can imagine the energy losses are high due to that extra insulation between the heat source and water for gas and oil units. Who writes these rules, as I said the boat sailed with no new good ideas from what I could see. Needless to say I am saddened by the new rules which I don't think are a step in the right direction.

Let's be thinking some warm thoughts, see the attached flyer for this year's Golf Outing. Look again as the date has changed due to the course not recovering from the nasty winter. It's Monday June 15th and checks must be in by April 30th. Don't forget it fills up very quickly and you don't want to miss it, time is almost up. Also the fishing trip is June 19th also coming up fast on us. I hear we will have some of our NYC Chapter friends joining us. I will be trying to win again the title of biggest fish caught. Thank you to our sponsors Accuspec, ADE, Gil-Bar and Trane for helping us out with the trip. Just go ahead and mark ASHRAE on your calendar for that week in June!

Our April meeting will be a field trip to John Harvard's Brew House in Lake Grove. We will tour the plant lead by one their Brew Masters and then sample the goods. We have done this before and it is well attended and liked by all. Also don't forget the ASHRAE Free Webcast April 23 : New Tomorrows for Todays Buildings. See the attached flyer.

Thank you to Chris Abbot and Wallace-Eannace for the interesting presentation in March on Hydronics: Most Frequent Questions, Comments, Concerns". I think we all learned we have to make sure we are reading the fine print in our own specs and on our plans because a lot of misinformation is out there that reads so well until there is a problem.

As always, I wish to thank all the volunteers and board members, I appreciate all your time and dedication to our chapter and community. We look forward to seeing everyone at the April Meeting and thank you for your continued support of the Long Island Chapter of ASHRAE.

Richard L. Rosner, P.E.
President - Long Island Chapter



BOG Meeting Minutes

American Society of Heating, Refrigerating and Air-Conditioning Engineers, Inc.

BOG Meeting, Long Island Chapter

Tuesday March 10th, 2015

5:00 – 6:00

Westbury Manor, Westbury, NY

(PAOE Min/PAR/Current/High Last Year)

Call to Order At 5:00 by Chapter President Rich Rosner

First roll call showed 6 Members - Rich Rosner, Don Kane, Andy Manos, Frank Paradiso, Lee Feigenbaum and Brian Simkins (Guest)

Guest Steve Sill also attended BOG; Charles Lesniak, Andrew Dubel, Rich Halley, and Thomas Fields arrived to fill out all the BOG members for the pre-meeting

Secretary (Rich Halley) Brian Simkins for Rich Halley

February Minutes reviewed with no changes

Motion to Approve - Andy Manos, Second – Lee Feigenbaum. Motion Passed

President (Richard Rosner)

PAOE 400/1000/1340/3765 Need to keep updating PAOE!

Rich reminded BOG to please work on articles this month and get them in on time.

Rich requested that each board member make sure to update PAOE points every month,

President-Elect/Programs (Thomas Fields)

LI- GEO to get back on joint meeting --nothing heard back to date

Field trip (Complete yearly calendar) -- John Harvard's was selected. Andrew, Frank, and Brian to review site with Brew Master.

Looking for Sponsors for cocktail hour please contact Tom with interest -- Trane looking to sponsor May meeting

Islanders night – was successful, fun had by all attended.

Chapter Technology Transfer (Don Kane)

PAOE 450/1050/1070/3765 – PAOE we have exceeded PAR. Field Trip – Changed to John Harvard's in Lake Grove—confirmed.

USPS receipt was received for IRS filing Don noted that ASHRAE Learning Institute notices have been added to the newsletter when received in a timely manner.

Treasurer (Andrew Dubel)

Budget is complete and still needs to be approved ---Andrew will bring budget to next meeting for review.

Balance in the general fund \$ 9,964.69 less tonight's expenses. It was noted again that \$ 2,500.00 needs to be transferred into the CRC account.

Don is working on newsletter invoicing

Treasurer needs Receipts from Pay Pal

Grassroots Government Activities (Charles Lesniak)

PAOE 500/650/425/1150

Proclamation was not able to be generated.

Brian S noted that the town meeting coincides with our meeting dates every month so his contact is not available.

Charles noted he is working on an article for next newsletter; the Chapter award patches have been added to the banner.

Historian (Andrew Dubel)

PAOE 100/300/175/600

Need to update points

Interviews needs to be followed up on

Andrew will work on history article

Presentation needs to happen for Wounded Warriors, look to do this month.

Honors and Awards Chair (Brian Simkins)

Working on past presidents awards. Timing aligns for our CRC for distribution.

Working on refrigeration award with LEA and NSUH for Katz Women's Hospital

BOG Meeting Minutes (Cont'd. from Page 4)

Research Promotion (Andy Manos)

PAOE - 800/1050/895/2964

30% goal was met.

The Vendor Book is complete and at printers

Vendor book invoicing is out

Fishing Trip is scheduled for June 19th, 3-7PM, Dixie II from Captree.

Membership Promotion (Lee Feigenbaum)

PAOE - 500/800/530/1260

24 delinquencies

280 members

31 Students

All good review from exiting members

Smart Start program to recognize better new members. Lee commented on how the students don't really even know they are members....they don't receive a membership card or any recognition.

Student Activities (Richard Halley)

PAOE 300/500/295/1902 Points need to be updated

May will be a student activities night

Need to update mailing list with Liset

Evan presented at SCCC.

Call National to see what can be done to get useful tools for students.

Looking to get better recognition for the students becoming members

Looking to see how our chapter can keep or move students into Associate members, especially need to get new email addresses so we can follow up

YEA (Frank Paradiso)

Leadership Retreat will be held in San Diego and is attending

Dave and Busters event was a success. Gained two new members!

Looking to schedule something at the Plattduetsche Park Restaurant

Beer Garden in Franklin Square

Web Master (Richard Rosner)

Need new annual articles from chairs. Please make sure that you are up to date

Web is conforming to ASHRAE national standards

Web is updated and current

CRC 2017 (Richard Halley)

Rich is working with the planner on locations that will fit our needs. We should have a list of locations ready for the April Meeting

He has some help in his office working on this with him.

Golf (Steven Friedman, Peter Gerazounis)

May 4th, 2015 Cherry Valley

Old Business

Tom Fields will get a quote from *Constant Contact* for emailing and related services

New Business

Newsletter articles due two weeks before next meeting or after last meeting

Second Role Call





Second roll call showed 9 Members - Rich Rosner, Don Kane, Rich Halley, Andy Manos, Frank Paradiso, Andrew Dubel, Brian Simkins, Lee Feigenbaum and Thomas Fields

Motion to adjourn At 5:58 by Charles Lesniak 2nd by Andrew Dubel

Time/Place of next BOG Meeting – April 14th, 2015. John Harvard's Brewery, Lake Grove

Motion to Adjourn

Chapter Monthly Meeting - Program for 2014/2015

<p>September 9, 2014 * At Westbury Manor </p> <p>Dinner Presentation – New Advances in High Efficiency Cooling for Data Centers Presenter - Dave Smith **1 PDH**</p> <p>Membership Promotion Night</p>	<p>February 2015 </p> <p>NATIONAL ENGINEERS WEEK</p> <p>Engineers Seminar Series February 12, 2015</p>
<p>October 14, 2014 * At Westbury Manor </p> <p>Dinner Presentation – Variable Frequency Drives and Motor Considerations Presenter - Gail O'Keefe **1 PDH**</p> <p>Back to Basic Session I - Evans Lizardos **1 PDH** "Smoke Purge System Design"</p>	<p>March 10, 2015 * At Westbury Manor </p> <p>Dinner Presentation – Plate/Frames Presenter - Chris Abbot **1 PDH**</p> <p>Joint meeting with LI-Geo / YEA Night</p>
<p>November 11, 2014 * At Westbury Manor </p> <p>Dinner Presentation – HVAC Air Distribution System Efficiency Presenter - Eli Howard **1 PDH**</p> <p>Resource Promotion Night Joint meeting with SMACNA Student Activities Night & YEA Night as well as Membership Promotion and Upgrade Night</p>	<p>April 14, 2015</p> <p>ANNUAL FIELD TRIP - John Harvard's Brew House Lake Grove, NY</p> <p>See Page 8 and 9 for Details</p>
<p>December 9, 2014 * At Westbury Manor </p> <p>HOLIDAY PARTY Free Buffet Dinner for Members</p>	<p>June 15 2015 * Cherry Valley Club, Garden City, NY</p> <p>* New Date, See Pages 22-24 for details</p> <p>ANNUAL GOLF OUTING</p>
<p>January 13, 2015 * At Westbury Manor </p> <p>Dinner Presentation – "The Steam Kettle" The Generation and Control of Steam for Space Heat and Process Presenter - Paul Peck **1 PDH**</p> <p>Back to Basic Session II - Evans Lizardos **1 PDH** "Pipe Designs for Control of Temperature and Flow in Water Systems"</p>	<p>May 12, 2015 * At Westbury Manor</p> <p>Dinner Presentation – Responsible Use of Refrigerants Presenter - Julian de Bullet **1 PDH**</p> <p>ASHRAE DISTINGUISHED LECTURER</p> <p>Back to Basic Session III – Evans Lizardos **1 PDH** "Energy Requirements for Different Refrigerant Systems"</p> <p>Student Activities Night / Refrigeration Night</p>
<p>January 24-28, 2015 </p> <p>ASHRAE Winter Meeting Palmer House Hilton Chicago, IL</p>	<p>June 9, 2015 * At Westbury Manor</p> <p>Free Buffet Dinner for Members</p> <p>PAST PRESIDENTS NIGHT & OFFICER INSTALLATION STUDENT SCHOLARSHIPS TO BE AWARDED ASHRAE History Quiz and prize Give-A-Ways</p>
<p>February 10, 2015 * At Westbury Manor </p> <p>Dinner Presentation – Air Distribution and Surgical Suites Presenter - Jack Conway **1 PDH**</p> <p>Joint Meeting with USGBC Research Promotion Night / Membership Promotion Night /</p>	<p>August 2015</p> <p>Chapter Regional Conference (CRC) Region I Syracuse Chapter Hosting August 20-22, 2015</p>

Long Island Chapter - Past Presidents

1958	H. Campbell, Jr. PE	1986	Jerome T. Norris, PE
1959	Clyde Alston, PE	1987	Abe Rubenstein, PE
1960	Sidney Walzer, PE	1988	Michael O'Rourke
1961	Sidney Gayle	1989	Mel Deimel
1962	William Kane	1990	Robert Rabell
1963	Louis Bloom	1991	Gerald Berman
1964	Milton Maxwell	1992	Donald Stahl
1965	Will Reichenback	1993	Ronald Kilcarr
1966	Joseph Minton, PE	1994	Jerald Griliches
1967	Irwin Miller	1995	Walter Stark
1968	Walter Gilroy	1996	Joe Marino
1969	Charles Henry	1997	Norm Maxwell, PE
1970	William Wright	1998	Alan Goerke, PE
1971	Louis Lenz	1999	Frank Morgigno
1972	Ronald Levine	2000	Michael Gerazounis, PE, LEED AP
1973	Henry Schulman	2001	Ray Schmitt
1974	Myron Goldberg	2002	Steven M. Stein, PE
1975	John N. Haarhaus	2003	Andrew Braum, PE
1976	Richard K. Ennis	2004	Claudio Darras, P.E.
1977	Kenneth A. Graff	2005	Craig D. Marshall, P.E.
1978	Evans Lizardos, PE, LEED AP	2006	John Nally
1979	Albert Edelstein	2007	Peter Gerazounis, PE, LEED AP
1980	Ralph Butler	2008	Steven Friedman, PE, HFDP, LEED AP
1981	Robert Rose, PE	2009	Steven Giammona, P.E., LEED AP
1982	Timothy Murphy, PE	2010	Nancy Román
1983	Leon Taub, PE	2011	Carolyn Arote
1984	Raymond Combs	2012	Brian Simkins, LEED AP
1985	Edward W. Hoffmann	2013	Andrew Manos, LEED AP BD+C



PAOE POINTS FOR 2014/2015

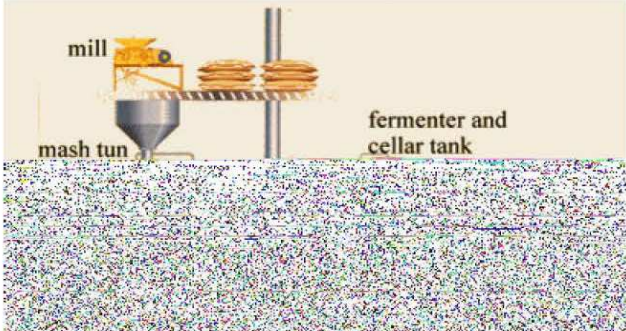
Chapter Members	Membership Promotion	Student Activities	Research Promotion	History	Chapter Operations	CTTC	GGAC	Chapter PAOE Totals
282	655	1,945	1,005	450	1,545	1,250	825	7,675

April Field Trip - Tuesday, April 14, 2015

ASHRAE LI CHAPTER'S ANNUAL FIELD TRIP TUESDAY, APRIL 14, 2015



2093 Smithhaven Plaza, Lake Grove, NY 11755

DATE:	TUESDAY, APRIL 14, 2015
ITINERARY:	6:00 PM: Tour Operations and infrastructure. Please meet at the bar. (PLEASE DO NOT BE LATE)
FEE:	\$40 per person (Includes Dinner and Beer/Wine Afterwards)
LOCATION:	John Harvard's Brew House, Lake Grove, NY
ABOUT THE TOUR:	<p>The tour will be given by one of John Harvard's Brew Masters and will include a behind the scenes look of the brewing process of their microbrews. Dinner and drinks will be served after the tour.</p> 

Pre-registration Required! See next page for RSVP form.

April Field Trip - Tuesday, April 14, 2015

**ASHRAE LI CHAPTER'S
ANNUAL FIELD TRIP
TUESDAY, APRIL 14, 2015**

John Harvard's Brew House

RSVP Form - Reservations are Required!
Email to Andy Manos at andrew.manos@stonybrook.edu
By April 10th, 2015

I would Like to Attend (NAME):	
Phone #:	

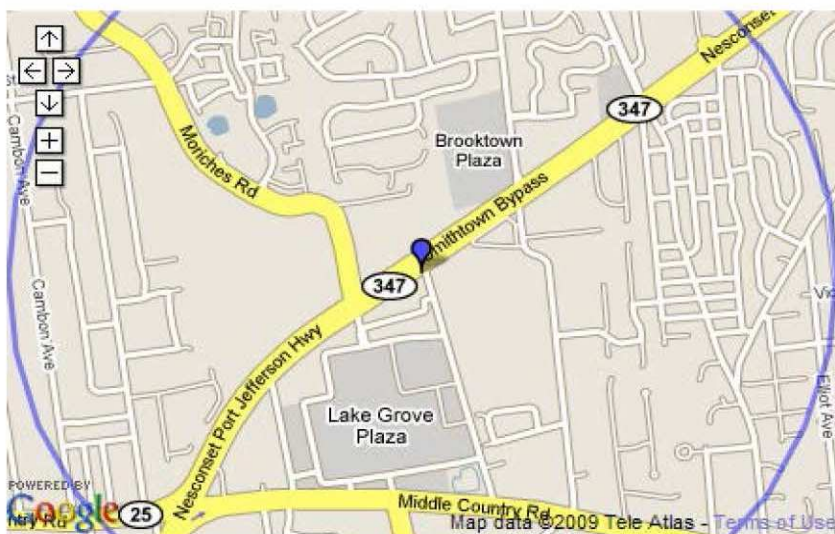
Directions:

John Harvard's Brew House

2093 Smithhaven Plaza
Lake Grove, NY 11755
(631) 979-2739

Driving Directions:

The Brew House is on the south side of 347, across from the Borders, near the Smith Haven Mall.



Membership

YES... the HVAC business is HIRING, and opportunities are abundant at ASHRAE! Over the past few months, multiple businesses dealing with various aspects of the HVAC industry have asked me if the Long Island Chapter could help them find good people to help their businesses grow.

Employers value your ASHRAE membership. Our members demonstrate a genuine interest in their continued personal and professional development along with a willingness to learn. Quite simply, our members go above and beyond to contribute meaningfully to the HVAC community. Our membership remains strong and the networking opportunities grow stronger every day. With graduation right around the corner, this is an excellent time to be a member of ASHRAE.



Unfortunately, these opened doors will close if you allow your membership to lapse. Renewing is easy at www.ashrae.org. Just log in and click "renew!"

If you are currently enjoying a student membership, this is the perfect time to check out our Smart Start program. This program allows you to benefit from ASHRAE membership for years at a deeply discounted price.

Are you interested in being published? Do you have a testimonial about the benefits of ASHRAE that you'd like to share? If so, then please forward it to me at membership@ashrae.org for publication in our monthly newsletter.

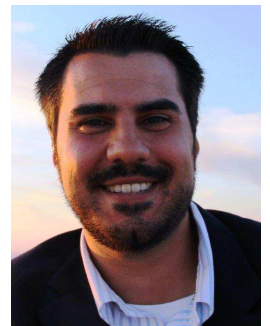
Cheers!

Lee Feigenbaum, LEED AP BD+C
Membership Chairman

Young Engineers in ASHRAE (YEA)

Happy spring, everyone. Hopefully the cold weather is near its end and we will soon enjoy warmer days.

I am writing to you while returning to NY from the YEA 2015 Leadership Weekend held in San Diego, CA. We spent the weekend focusing on team building, self marketing (being your own brand), self development (inclusive of confidence building), and networking. Throughout the sessions and organized social events, I had the opportunity to meet with members across our country & even a few international members. I would highly recommend this event, & others like it, as it serves as an opportunity to develop one's strengths beyond technical skills & hands-on experience and to also learn from others whose experiences might mirror our own current paths or goals. I'm usually not very outgoing but I had a great time with the group and am excited to put what I've learned into practice. Please feel free to reach out to me with any questions about the YEA 2015 Leadership conference or any additional YEA events.



Please come join us for our next chapter meeting on April 14th at 6pm located at:

John Harvard's
2093 Smithaven Plaza
Lake Grove, NY 11755

Also, I am looking forward to creating another YEA social event towards the end of April. This event will most likely be held on a weekend (most likely a Saturday) at Plattduetsche located on Hempstead Turnpike in Franklin Square NY. Stay tuned for an email with the ironed out details for this social event.

Hope to see you all out there.

Frank Paradiso
YEA Chairman

Research Promotion

I would like to thank all the companies who have participated in the annual 2015 Product Directory of Manufacturers and their Representatives.

The Product Directory has been prepared as a service to all its members and as a service to the local HVAC industry. It will be made available to all ASHRAE and non-ASHRAE members at no-cost and can be obtained from our monthly meetings or directly from our web-site.

The Directory is intended to provide better communications between manufacturers and their sales representatives; engineers who specify products; contractors who purchase and install the equipment; and other interested parties. Product Directory listings are not limited to ASHRAE members and the listings are not to be considered as advertising or endorsement by ASHRAE of any product, manufacturer or representative.



This year's overall resource promotion goal is \$2,208,050 with over 75 research projects on board. Our chapter is expected to raise approximately \$15,300 towards the overall goal of which we have already raised \$9,700. I am hoping I can count on the continued support of all of our past contributors who have generously supported us over the years. I also look forward to gaining the support of new contributors this coming year. Please help support ASHRAE in any way you can.

I would like say 'thank you' to all the contributors listed below whom have already donated to ASHRAE this year:

INDIVIDUALS

Mr Andrew B Dubel, PE	Mr John D Nally
Mr Andrew E Manos, LEED AP	Mr Kenneth T Mueller
Mr. Anthony J. Rosasco, Sr	Mr Lee Feigenbaum
Mr Charles J. Lesniak, PE	Mr Marcel A Bally
Mr Donald Kane, PE	Mr Michael Gerazounis, PE, LEED AP
Mr. Evans J Lizardos	Mr Richard I Halley
Mr Frank Morgigno	Mr Richard Pearson, PE, LEED AP
Mr Frank Paradiso	Mr Richard L Rosner, PE
Mr James Tauby	Mr. Ricky Gaska
Mr Jerome T Norris	Mr Ronald J Kilcarr, PE
	Mr Thomas Fields, PE, LEED AP

COMPANIES

Accuspec Inc.	EMTEC Consultants
ASAP Sales	Gil-bar Industries
Building Cooling Systems	Mason East
Bush Wholesalers	Metro Air Products
Carrier	Mitsubishi
Catan Equipment Sales	PVI / Riverside Hydronics
Daikin	Technical Air Systems, Inc.
Dagher Engineering	Vitaolic

CONTRIBUTIONS CAN BE MADE IN THE FOLLOWING WAYS:

1) You can mail your checks, made out to ASHRAE Research Promotion, to:

Andrew Manos
ASHRAE Research Promotion Chair
c/o Stony Brook University
Research and Support Services, Suite 160
Development Drive
Stony Brook, NY 11794-6010

2) You can bring your check to any of the meetings and give it to me. I will mail it into headquarters.

3) You can contribute via PayPal from the ASHRAE LONG ISLAND web site, just click on the donate button.

4) You can contribute directly on-line. www.ashrae.org

*** Please make sure you accredit your contribution to the LONG ISLAND CHAPTER 006 ***

Thank you again for all of your support!

Andrew Manos, LEED AP BD+C
Research Promotion Chair



CTTC - BTU's and BREWS

"You can't be a real country unless you have a beer and an airline - it helps if you have some kind of football team, or some nuclear weapons, but in the very least you need a beer."— Frank Zappa



I'm sure that Mr. Zappa had no idea that he would provide the lead-in to a technical article for the HVAC/R community, however, he seems to have stumbled upon a key ingredient in almost all cultures from the beginning of recorded time (and perhaps before); almost all forms of civilization seem to have discovered how to make alcoholic beverages, beers and ales being quite popular ones. Today's brewmasters, whether operating out of their basement or a large commercial facility, certainly have much technology at their fingertips, should they chose to utilize it, to produce a more consistent, high quality brew.

How did their forefathers, without benefit of electrically operated heaters or chillers with refrigerant coursing through their stainless steel or copper arteries manage to produce a viable product? How did they control the brewing process without benefit of PID controllers, programmable logic and SCADA systems?

The brewing process can be summarized by paraphrasing the muscle-bound gentleman in the *Planet Fitness* commercial... "we heat it up....we cool it down....we heat it up...we cool it down"; with periods of just maintaining the temperature in between the up and down excursions. Thus this month, we will dwell a bit on the "H" and "R" in HVAC/R, the heating up...and cooling down!

Of course, the brewing process is a little more involved...but, in capsule form, one takes grains....extracts starches....converts them to sugars...and ferments it to alcohol. Other than cleanliness (contaminants can doom the brewing cycle before it has a chance to start) the most important factors in turning out an acceptable batch of pilsner or lager (or any one of hundreds of other variants) are enzymes and temperature control, which themselves are closely related (we heat it up....we cool it down).

The enzymes (α -amylase and β -amylase primarily) are responsible for converting the starch content of the grains into sugars, which are subsequently fermented into alcohol. It turns out that enzyme action (as well as yeast activity further down the process) is extremely dependent upon the constituents being brought to and maintained at the proper temperature. Depending on which of the key enzymes are more active, the finished brew can take on a very different flavor. α -amylase works best at 154-162°F, while β -amylase is denatured (the molecule falls apart) at that temperature, working best between 131-150°F. But...we get ahead of ourselves...first some basics of hardware and ingredients.

In its simplest configuration, the brewers equipment line up would comprise a Hot Liquor Tank, a Mash/Lauter/Sparging Tun, a Boil Kettle and a fermenting tank (or bottle). Unless you are using the Hot Liquor Tank (which actually contains water) to heat recirculating mash liquor (utilizing a heat exchanger), it can be eliminated from the line up if one wants to simplify the apparatus. In the so-called "all-grain" method (starting from grains rather than using an extract produced from grain by others), the grains are milled prior to the "doughing-in", when hot water (from the Hot Liquor Tank or other source) is added to the grain in the Mash Tun. The temperature of the mash is increased in controlled steps which results in the extraction of the starches and conversion of the starches to sugars, by the enzyme action. After the requisite time, the liquid (wort) is removed from mash (Lautering/Sparging) and transferred to the Boil Kettle. In the Boil Kettle, the wort is both concentrated and, by raising the temperature to pre-determined levels for specific dwell time, the flavor or the resultant brew is developed (for example, an increased melanoidin content, the result of additional boil time, will result in a more "malty" taste). After boiling, the wort is cooled without cunctation (to forestall the growth of bacteria which could be harmful...and cause the brew to taste not too good) prior to "pitching" the yeast (adding the yeast to the wort), to begin the fermentation of the sugar-rich wort. If fermentation is allowed to occur at excessive temperatures (higher than 70 °F for ales, 50 °F for lagers), fruity flavored esters and/or harsher fusel alcohols (fusel...from the German for "bad liquor") may be formed, adversely affecting the final taste of the brew. Fermentation is followed by chilling and filtration and, if needed to promote carbonation, Kräusening....(adding freshly fermenting wort to carbonate beer ready to bottle...bringing the mixture to room temperature for a few days...then 50 °F for a week or two).

The basic process outlined above can be scaled from extremely small quantities and techniques (such as a hobby or home brewer may use) to the elaborate facilities and controls utilized in the major breweries which turn out vast quantities of liquid product, the result of chemistry and thermodynamics. In some cases, neophyte brewers utilize little measurement and control, relying on the temperature of their basement or garage to be correct for the task at hand. This is, at

CTTC - BTU's and Brews (Cont'd. from Page 12)

best, a chancy proposition which, even if it ends in an acceptable outcome, likely cannot be easily repeated. If one is to be able to brew without regard for external thermal concerns, some degree of measurement and control is necessary.

It is often noted that one cannot control that which one cannot measure. Thus the starting point in our battle of the brewing BTUs vs. temperature measurement. This may be effected by something as simple as a temperature change tape on the vessels used (similar to what one sticks to the side of the LPG tank on the backyard barbeque) or a thermometer whose probe (or sensing element if remote from the indicator) can be immersed in the various liquid stages of the process. Thermometers or, for the more advanced, thermocouple and RTD sensor elements, can be directly immersed in the liquid or, preferably (given the end result is something which will be consumed by living beings) located in thermowells installed in the vessels to provide isolation from the contents while not impeding thermal communication.

Once a means of measuring the process temperatures exists, one is in a position to control the flow of heat (addition or removal) to maintain the desired temperature of the process. Once again, depending upon the level of sophistication these sensing inputs will be used to instigate manual manipulation or automatic control of heat sources and sinks, flows and dwell time. It would be easy to just make the distinction between "hobby" brewers and commercial operations, however, as one reads the copious literature available, it becomes apparent that many of the hobby brewers are using technology (programmable controllers, PID control logic and data logging) normally thought of as being used only by the "big guns" of the brewing industry.

In order to maintain the mash temperature at the correct level for sufficient time for the enzymes to work their magic, the simplest approach is the so-called decoction method; removing a specific amount of the mash, heating it to the temperature of boiling water and then returning it to the tun, fully mixing it with the remainder of the mash. Since, for a given elevation, the boiling point of water is a known quantity, this exercise becomes one of simple math and ratios, varying only the percentage of the initial mash that is heated and returned to the tun. This method also permits the brewer to "flavor" the mash, due to the changing characteristics of the mash at elevated temperatures. More elaborate set-ups may employ a recirculating heater (with an electric heating element) or a heat exchanger using the hot water in the Hot Liquor Tank to heat that portion of the mash passing through the heat exchanger coil.

Once the mashing is complete ("mash-out" at 170 °F stops enzyme activity...temperatures higher than this will encourage the leaching out of tannins, creating a harsh tasting brew), sparging or lautering (generally employing successive "washes" of water) takes place to remove the liquid wort from the mash tun, capturing as much of the sugars which have been formed from the grains' starches. In order to optimize the transfer of the sugary wort, specific gravity of the liquid introduced into the boil kettle is monitored. After the wort has been boiled for a sufficient time, it is necessary to quickly cool it to prevent the previously mentioned bacterial growth (the sugar rich liquid is a wealth of nutrient for things that want to grow). If one's boil kettle is small enough (and your sink large enough) a home brewer may just plunge the boil kettle into a sink filled with cold water...perhaps flowing additional water to extract more BTUs from the wall of the kettle. Another method is to use an immersion coil (through which cold water is flowing), plunged into the now boiled wort, until the temperature of the liquid has been brought down to the correct temperature to "pitch the yeast", and begin fermentation.

While too cold of a temperature will prevent fermenting from starting or if it starts, activity will be sluggish, too high of a fermenting temperature will heat stress the yeast and prevent proper fermentation. Occasionally, if the ambient is quite low, some added heat may be needed to start fermentation. Generally, for small scale brewing, this may be accomplished with aquarium heaters or "wrap around" heaters on the outside of the fermenting tank (which may be the same pot used to boil the wort in some cases). More frequently, it is necessary to remove heat from the fermenting vessel as the fermentation progresses. While the commercial operations may use conventional cooling coils and liquid bath for this, the small operation or home brewer will frequently use a simple ice bath or a circulating water bath flowing through an ice bath, to remove the excess heat from the fermenting liquid. As this could require significant water, is somewhat messy and increases the chances of contaminating the brew, other ingenious experimenters have developed chiller equipment utilizing basic materials such as an insulated cooler (or a two compartment container fabricated from foam insulation blocks) divided into two sections. One to hold the vessel with the fermenting brew and the other to hold ice, generally in the form of frozen water in soda bottles. By utilizing a small muffin fan, thermostatically controlled, to move cool air from the "ice chamber" into the fermenting tank chamber, the proper process temperature can be maintained.

Again, temperature sensing could be as simple as a thermostat bulb in contact with the fermenting tank exterior wall (with sufficient insulation to isolate it from the air around it), or a thermal sensor in an imbedded thermowell.

CTTC - BTU's and Brews (Cont'd. from Page 13)

Once the fermentation has proceeded to completion, the results are bottled, chilled and await the clarion call to slake one's thirst.

Interestingly, as critical as temperature control is to the brewing process and the high level of sophistication of equipment to control this in commercial operations, once the bottled product leaves the brewery and goes into the warehouse/distribution chain, the careful monitoring and control has not always been continued. Some large operations now monitor the product during storage and utilize modern SCADA systems to monitor the storage environment and make sure that critical temperatures are not exceeded, which could have a deleterious effect on the quality of the product.

While this has been, admittedly, a somewhat brief and simplistic treatise on how temperature sensing and control is critical to the brewing community, I would heartily recommend to all who desire a more "up front and personal" view of the processes involved, to come to our Chapter's April Field Trip to John Harvard's Brewery and Ale House, in Lake Grove, Tuesday, April 14, 2015 at 6:00PM. There will be a tour of the microbrewery followed by dinner and a chance to savor the nuances of the brewing process. Hope to see you all there.

Don Kane, P.E.
CTTC Chair - cttc@ashraeli.org

Student Activities

Spring has sprung (really?) well maybe not the weather but our students are making the turn and heading into the home stretch. Just about 6 weeks to go before they are done for the year. If you are in need of summer interns please contact me with you requirement and I can assisted you with a possible match.

Last month continued to be busy as we held a basic controls class for the Student Chapter at Suffolk County Community College. I would like to thanks Eugene Silberstein for his leadership with the chapter in scheduling their meeting and utilizing the committee as much as possible.

Our ASHRAE Long Island chapter student scholarship program is now accepting applications for our annual student scholarship. We have attached a copy of the application to this newsletter and if you need additional copies please Email me at rchalley@trane.com . Don't forget the deadline for applications is May 1, 2015.



Richard Halley
Student Activities Committee Chair

Annual Student Scholarship

American Society of Heating, Refrigerating &
Air Conditioning Engineers
Long Island Chapter, Region 001



ANNUAL STUDENT SCHOLARSHIP

The Long Island Chapter awards up to two (2) \$1,000.00 or (1) \$1,000.00 and (2) \$500.00 scholarships annually to those who are well rounded and show an interest in pursuing an engineering career. Eligible entries for the 2014/2015 year must be submitted by **May 1, 2015**. Email address rchalley@trane.com

Application date: _____

Personal information:

Last Name	First	Middle
-----------	-------	--------

Home address	City	State	Zip
--------------	------	-------	-----

School address	City	State	Zip
----------------	------	-------	-----

Phone #	E-mail address -Home
---------	----------------------

Cell #	-School
--------	---------

Faculty Reference:

Name	Address	Phone #
------	---------	---------

1. _____

Personal Reference:

Name	Address	Phone #
------	---------	---------

1. _____

2. _____

Education:

High School Date	Location	Years Attended	Graduation
---------------------	----------	----------------	------------

College/University graduating	Location	Years Attended	Date
----------------------------------	----------	----------------	------

College major	GPA
---------------	-----

American Society of Heating, Refrigerating &
Air Conditioning Engineers
Long Island Chapter, Region 001



Essay: Please describe your interests, activities, goals and why you deserve this scholarship (Attach additional sheets as necessary).

[illegible]

No question on this application is asked for the purpose of limiting or excluding any applicant's consideration for reasons proscribed by federal, state or local law, and discussions are based entirely on knowledge, skills and ability. Qualified applicants are considered without regard to race, color, religion, sex, national origin, disability or age to the extent prohibited by law.

Faculty	advisor	signed
---------	---------	--------

Grassroots Government Activities Committee (GGAC)

Community Outreach

As part of his 2012-2013 presidential theme, "*Broadening ASHRAE's Horizons*", Presidential Member Thomas E. Watson, PE, encouraged the members of ASHRAE to reach out to communities and put our collective skills and knowledge to use to help make the world a better place. Recently, one of our student members, Robert Tschoke (presently a student in the Eastern Suffolk BOCES Trade Electric Class, as a stepping stone to future enrollment at Suffolk County Community College's HVAC program) joined with over a dozen others, traveling to Costa Rica with "6:8 Ministries" (a non-denominational, not-for-profit organization) to do his part. While in Costa Rica, stopping first in the City of La Juelita before travelling on into the rainforest, Robert assisted with the repair and upgrading of several buildings used for housing; installing electrical wiring, lighting and ventilation fans (as well as painting and other general maintenance work). While it is easy for us to take for granted things such as light fixtures and bathroom fans, for much of the world they represent the difference that makes a structure habitable. Robert is to be commended for taking time to do his part to help improve the quality of life for the residents of that distant locale.



Grassroots Government Activities Committee (GGAC) (Cont'd. from Page 17)



Charlie J. Lesniak, P.E.
Grassroots Government Activities Chair

Easy Rider Meets ASHRAE?



With the coming of Spring (late season snow storms notwithstanding) and knowing that a number of our Chapter's members are itching to bring their motorcycles out from behind the snow blowers, we are looking to gauge interest in a group ride in the near future.

1. Would you be interested?
2. Would you prefer a weekday or weekend? (If week end, Saturday or Sunday?)
3. Would you prefer a short (1/2 day) ride (maybe breakfast before hand) or a longer trip (maybe to Greenport or Montauk) with lunch at the destination and maybe a stop or two on the way there and back?
4. Would you prefer: June, July, August or September?

Please respond with your preferences to: CTTC@ashraeli.org

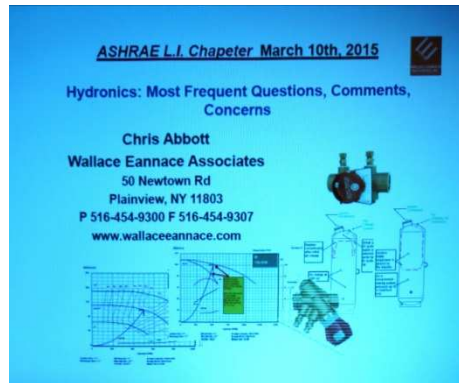
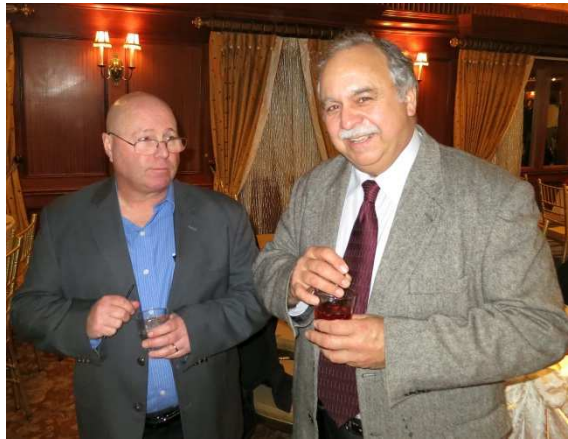
Thanks,
Don Kane
CTTC-Chair



March Meeting Pictures



March Meeting Pictures



ASHRAE Golf Outing - Monday, June 15, 2015



16th Annual LI ASHRAE GOLF OUTING

Monday – June 15th, 2015

Place: Cherry Valley Club
 Brunch: 11:00 am
 Shotgun: 12:30 pm
 Reception: 5:30 pm
 Dinner: 6:30 pm



This Event fills up fast, to guarantee a spot RSVP Soon.

(2) Foursome Limit Per Company.

Proper golf attire and shoes are required. Locker room and shower privileges are included.

CHECKS MUST BE IN BY APRIL 30, 2015 (No Exceptions)

Fax, Email or Mail entire sheet or cut this half and return

Name: _____ Company: _____
 Address: _____ Phone: _____
 City, State, Zip: _____ Fax: _____

I have read and understand the Cherry Valley Rules and Regulations (Signature): _____

Guest 1: _____ Company: _____
 Guest 2: _____ Company: _____
 Guest 3: _____ Company: _____



Fund raising is primarily through the contributions of our sponsors.

Please make check payable to:

ASHRAE – Long Island Chapter

Mail Checks To:

MG Engineering D.P.C.

Attn: Peter Gerazounis, P.E. LEED AP

116 West 32nd Street

New York, NY 10001

Fax No.: (212) 643-0503

Email: peter.gerazounis@mgedpc.net

Golf & Meals:	\$ 350 pp x _____	= \$ _____
Reception & Dinner:	\$ 130 pp x _____	= \$ _____
Sponsor Dinner:	\$1,000 <input type="checkbox"/> Yes	= \$ _____
Sponsor Lunch:	\$ 500 <input type="checkbox"/> Yes	= \$ _____
Sponsor Reception:	\$ 500 <input type="checkbox"/> Yes	= \$ _____
Sponsor Prizes:	\$ 500 <input type="checkbox"/> Yes	= \$ _____
Sponsor Beverage Cart:	\$ 500 <input type="checkbox"/> Yes	= \$ _____
Sponsor Hole:	\$ 200 <input type="checkbox"/> Yes	= \$ _____

ASHRAE Golf Outing - Monday, June 15, 2015

Cherry Valley Club

28 Rockaway Avenue at Third Street

Garden City, NY

Telephone: (516)746-4420

Fax: (516)746-4421



Program:

11 a.m. Brunch in the Clubroom & Lounge – including Omelet station, deluxe deli board with rolls, chicken scarpiello, danish, croissants, bagels & cream cheese, sliced nova, fresh fruit and cheeses, Good Humor ice cream cart.

12:30 p.m. Shotgun Start Golf – Playing individual scores. Prizes for long drive, closest to the pins, low gross and callaway. Refreshments at the halfway house will include packaged snacks and whole fresh fruit, hot dogs, beer & soda. A snack cart will also be on the course. Carts, forecaddies, driving range, locker room and showers are all included in the price.

5:30 p.m. Following Golf - Open Bar with hot and cold horsd'ouvres in the Main Lounge. Fresh mozzarella with sun-dried tomatoes, cajun chicken, spring rolls, baby lamb chops, sesame chicken, turkey canapés, fried oysters, cheeses, fresh fruit, lobster halves, fresh clams & oysters, shrimp and crab claws.

6:30 p.m. Reception Dinner – Awards and raffle in the Main Dining Room. Carving stations of beef tenderloin & turkey breast. Chafing dishes of chicken & salmon featuring the chef's specialty, pasta station with marinara or vodka sauce, and choice of tossed or Caesar salad. Viennese dessert table following the dinner featuring pastries, fruit, cookies, assorted cakes and pies. Full beverage service throughout is included.

Women are also invited to attend and participate. There are locker room facilities available. The Cocktail hour and Dinner will also be available for those who cannot attend during the day for the golf.

Note: We are limited to 128 golfers. Openings will be filled on a first come-first serve basis. Corporate sponsorships will be available and raffle items will be welcome. Proper golf attire is a requirement for the golf course. Soft spikes are required. Please wear a jacket for the dinner.

Directions:

From the North Shore of Long Island: Take the Long Island Expressway to Exit 34 South (New Hyde Park Road Southbound), Grand Central Parkway (Northern State Parkway) to Exit 26 South (New Hyde Park Road Southbound) or Jamaica Avenue (Jericho Turnpike) Eastbound to New Hyde Park Road. Travel Southbound on New Hyde Park Road for approximately 5 to 7 miles to Stewart Avenue (You will cross over a set of railroad tracks). Take Stewart Avenue eastbound for approximately 1-1/2 miles to Cherry Valley Avenue. Travel Southbound on Cherry Valley Avenue for 1/2 mile, Cherry Valley Avenue becomes Rockaway Avenue. Continue on Rockaway Avenue and the entrance to Cherry Valley Club will be on your right.

From Local Points North: Take Old Country Road or Stewart Avenue to Franklin Avenue. Travel Southbound on Franklin Avenue to Fourth Street (just after crossing over railroad tracks). Turn right on Fourth Street and continue until it ends (Rockaway Avenue). Cross over Rockaway Avenue into the Cherry Valley Club's parking lot.

From the South Shore of Long Island: Take the Southern State Parkway to Exit 19 (Peninsula Boulevard-Hempstead/Garden City). Travel Northbound on Peninsula Boulevard for approximately 1/2 mile to President Street. Bear left on President Street (Northbound) for approximately one mile and cross over Hempstead Turnpike. President Street will become Cathedral Avenue. Continue on Cathedral Avenue for one mile to Fourth Street. Make a left on Fourth Street (Westbound) and continue until it ends (Rockaway Avenue). Cross over Rockaway Avenue into the Cherry Valley Club's parking lot.

From Local Points South: Take Hempstead Turnpike to Franklin Avenue. Travel Northbound on Franklin Avenue to Fourth Street. Turn left on Fourth Street and continue until it ends (Rockaway Avenue). Cross over Rockaway Avenue into the Cherry Valley Club's parking lot.

ASHRAE Golf Outing - Monday, June 15, 2015

Cherry Valley Club Golf Outing Guidelines



To add the enjoyment of your day, we ask that you abide by Cherry Valley Club's basic rules of The Club, dress, golf etiquette & safety, golf carts, and care of the course.

Club Rules

1. Smoking is not permitted in the Club House.
2. Cell Phones are permitted in the parking lot only. Use of Cell Phones beyond the parking lot is strictly prohibited. This includes the Golf Course.

Dress Code

1. Jeans, designer or otherwise, are not acceptable on club property. This not only includes pants, but skirts, and cut-offs.
2. T-shirts and tank tops are not in keeping with the atmosphere of the club and as such, are not acceptable. The definition of T-shirt includes those with psychedelic coloring or suggestive printing.
3. If the Main Dining room is going to be utilized for any purpose, jackets are required.
4. Short shorts are not permitted on the golf course, practice tee or putting green by either male or female. Bermuda shorts of acceptable length are permitted. Jogging attire and denim pants are not considered proper attire for the golf course.
5. **Soft spikes** are mandatory at all times on our fine golf course. If your shoes need soft spikes, arrive early so we can change them. There is a nominal fee. There is **no** exception to this rule.

Golf Etiquette and Safety

1. Slow play shows lack of consideration for the players in your group and, more important, for the players behind you. Golf is made much more enjoyable if all players adhere to the following points in the conduct of play:
 - Minimize the time spent looking for balls by watching the flight of balls hit by everyone in your group. If a ball appears to be lost or out of bounds, hit a provisional ball before leaving the tee.
 - Signal the players behind you to play through if it becomes apparent that a ball will not easily be found and you are holding up play.
 - Don't rush addressing and striking the ball but move briskly between shots.
 - If your ball is some distance from the golf cart and the exact club selection is in doubt, take several clubs with you when you leave the cart to walk to the ball.
 - When play reaches the area of the green, park the golf cart(s) behind the green or adjacent to the next tee. Walk briskly off the rear or side of the green after putting out. Mark your score cards after your group is off the green.
 - Once a score of double par has been posted, pick up and move on to the next hole.
2. No player should play until the players in front are out of range.
3. If your ball appears headed for a player or group of players immediately shout "fore" in a loud clear voice.
4. No one should move, talk or stand close to or directly behind the ball or the hole when a player is addressing the ball or making a stroke.

ASHRAE Fishing Trip - Friday, June 19, 2015

Come Join Us!



ASHRAE Long Island Chapter's Fishing Trip 2015

Date/Time

Friday, June 19th, 2015
3:00 p.m. – 7:00 p.m.
(Please be at the dock at 2:30 p.m.)

Location

Dixie II @ Captree State Park Boat Basin, NY

Fee

\$50 per person
(Maximum of 50 people)
Food, Beverages, Bait & Tackle will all be provided

Please RSVP by June 1st, 2015

andym22@optonline.net

Sponsored by:



A.D.E. SYSTEMS, INC.

**GIL-BAR
INDUSTRIES**



TRANE®

Directions to the Boat: Take Southern State Parkway to Exit 40 South Robert Moses Causeway South. (Ocean Beaches). Continue South on Robert Moses Causeway (over two bridges) follow the signs for Captree State Park Boat Basin. Dixie II is located on the east end of the parking lot near the bait store.

Save-the-Date: Free ASHRAE Webcast - April 23, 2015

SAVE THE DATE

April 23, 2015

1:00pm - 4:00 pm EDT

FREE ASHRAE WEBCAST

***New Tomorrows for Today's Buildings:
Existing Building Commissioning***

This FREE webcast will feature industry experts who will define the benefits of existing building commissioning for the environment, occupants, operations staff, and overall ownership costs. Viewers will be able to recognize the varied scopes of commissioning, when to apply comprehensive versus focused commissioning, and best practices in existing building commissioning specifications & contracting.

Visit www.ashrae.org/Webcast for additional information about the program, sponsorships, continuing education credits, speakers, and registration.

\$\$\$ SAVE MONEY \$\$\$

ASHRAE-LI is now offering **Ticket Books** for our Monthly Meeting/Dinner presentations. **\$400 for a book of Eleven** (that's right....eleven, one better than ten) tickets for the price of ten member admissions. Tickets are valid until December of 2015 and may be used by members and non-members. For those of you who attend all or most of our meetings and for organizations who normally send large groups to the meetings, this is a great way to save a few dollars and speed up the entry process. For more information and/or to purchase ticket books, **please contact Don Kane at finsec@ashraeli.org or call 631-574-4870.**



ASHRAE's 2015 Annual Conference



Special first
time attendee
registration
fee available!



Join us at ASHRAE's 2015 Annual Conference
June 27-July 1 | Atlanta, Georgia | www.ashrae.org/atlanta

Join ASHRAE in its hometown of Atlanta! Take advantage of the opportunity to discuss and examine the latest topics in the building industry, such as high performing buildings and modeling, through the technical program; participate in technical tours; attend ASHRAE Learning Institute courses; sit for an ASHRAE certification exam; and earn professional development credits.

Conference Technical Program—includes the third annual Research Summit, which brings together researchers to present and discuss the latest research. Tracks focus on the design, construction and operation of high performance buildings, specifically advanced design guidance, modeling, operation and optimization, and indoor air quality. Laboratories, refrigeration, fundamentals, applications, systems and equipment round out the program.

Networking—share ideas and learn from fellow members from your hometown and around the world.

ASHRAE Learning Institute—choose from two full-day professional development seminars and seven half-day short courses to stay current on new HVAC&R technologies.

ASHRAE Certification—to gain a competitive edge, apply by June 9 to sit for an ASHRAE Certification exam.

CLASSIFIEDSInside Applications Engineer/HVAC Systems

Manhattan based HVAC installation & service contractor is looking for a new team member for its' Technical Service Dept.

The candidate should possess the following field experience:

Lead Service Technician with a desire to transition into an office environment

Control Contractor Technician to expand knowledge of piping, duct work, refrigeration circuiting and equipment

HVAC System Engineer

7-10 Yrs. Experience

Key Responsibilities:

Provide Technical Support to Field Project Management Team

Review Project Drawings & Specifications

Create Submittal package of piping details and wiring diagrams for approval

Interface with and confirm accuracy of building automation sub-contractors and drawings

Assist field service technician with equipment commissioning and trouble shooting

Interface with manufacturer's representative

Participate with in-house seminar program

Benefits Package: Medical, 401(k), paid vacation, health and dependent care reimbursement accounts and annual bonus

Please email resume to: jobs@pimechanical.com

Fax: 212-886-6605

Attn: Vivian

ADE Systems, Inc. is one of the largest HVAC manufacturer's representatives in the New York Metro, Northern New Jersey and Northern Florida area who is seeking **Entry level** and **Experienced individuals** with a technical/engineering background to join our growing team in our Lynbrook, NY office.

Candidates with an interest in the engineering side will provide inside application and technical support to the engineering and architectural community for the HVAC products our company represents as well as provide support for our outside engineering consultant team; Experienced individuals will have the opportunity to join the outside consultant team concentrating in their area of expertise.

Candidates with outside sales interests or experience will have the opportunity to join our sales team either assisting or a part of outside sales calling on mechanical contractors, building owners, and consulting engineers selling the HVAC products our company represents.

Many new products will be added in 2015, especially on the equipment side; if you are experienced in equipment sales it is worth your time to discuss the opportunities.

Salary & Benefits Overview

Salary range based on experience.

Product training and support provided – in house and factory training.

Excellent benefits program including medical, dental, 401k, 2 weeks vacation, paid holidays

Opportunity for advancement.

All interested parties can forward their resumes to careerops@adehvac.com; or contact Mark Agulles at 516-322-2912 for more information

ADVERTISEMENTS**PLACE YOUR AD HERE****OR
HERE****OR
HERE****OR
HERE****OR
HERE**

AN AD OR BUSINESS CARD LISTING IS A GREAT WAY TO GET YOUR COMPANY'S NAME IN FRONT OF THE HUNDREDS OF LI CHAPTER MEMEBERS, AND TO HELP SUPPORT THE CHAPTER'S ACTIVITIES.

If you would like to place an advertisement in the Long Island Sounder, please contact our Chapter Financial Secretary, Don Kane, PE @ 631-574-4870 or by email at finsec@ashraeli.org for further details. Thank you.

Rates (includes all issues September-June):

Business Card \$200
Triple Size \$350

Half Page \$500
Full Page \$800

ADVERTISEMENTS

**PLACE YOUR
AD HERE**



MATT ROMANELLI
E-MAIL: MROMANELLI@GIL-BAR.COM

GIL-BAR INDUSTRIES

NEW YORK OFFICE
5 WEST 19TH STREET
NEW YORK, NY 10011
TEL: (212) 331-8272
FAX: (212) 331-8273

LONG ISLAND OFFICE
25 NEWBRIDGE ROAD
HICKSVILLE, NY 11801
TEL: (516) 216-4310
FAX: (516) 869-4042



631-491-1300 x16
FAX 631-491-8551

Ultimate Power Inc.

INDUSTRIAL BURNERS • BOILERS
GAS • OIL • BURNER SERVICE • A/C & INSTALLATION
NATIONAL BOARD CERTIFIED "R" STAMP REPAIR CO.
DDC CONTROL SYSTEMS
MECHANICAL CONTRACTORS FOR OVER 36 YEARS

RONALD MILANO

45 NANCY STREET
WEST BABYLON, NY 11704-1498
EMAIL: RMILANO@ULTIMATE-POWER.COM

Leonard Van Sicklin
President



Mechanical Services Inc.
• HEATING & AIR CONDITIONING •
• SHEET METAL • SERVICE •

440 Wyandanch Avenue
North Babylon, NY 11704
lv@anronac.com
www.anronac.com

Phone: 631-643-3433
Fax: 631-491-6983
Cell: 631-860-4349

== JAR ==

J. A. Robertson, PE
Mechanical Engineer
HVAC/Plumbing System Design

P.O. Box 4982
Richmond, Virginia, 23220
jar4d@alumni.virginia.edu
Licensed: DC/MD/VA

Frank D. Morgigno - President/CEO fm@atiofny.com



90 Plant Ave. • Ste. 110 • Hauppauge, NY 11788
Tel: 631-331-0215 • Fax: 631-928-4625
www.atiofny.com



Kevin Cirincione
President

COUNTY ENERGY CONTROLS, INC.
County Pneumatic Controls, LLC
Energy Management Systems

429 Montauk Hwy - POB 780
East Quogue, NY 11942
www.countyenergycontrol.com

p: (631) 653-9124
f: (631) 653-9177
e: kevin@countyenergycontrol.com

BERNE & BOB LEVENTHAL, INC.

Manufacturer's Rep. for Governair Corp.

NEW YORK CITY, LONG ISLAND, & WESTCHESTER

GOVERNAIR CORP.

**Roof Top Penthouses to 400,000 CFM
Custom DX Systems to 500 Tons
(Air – Water – Evap Cooled)**

Complete engineered systems designed and built for specific
job requirements and complying with the latest NYC Sound code.
Replacements for existing Governair units.

BOB LEVENTHAL

TEL (516) 826-5270

FAX (516) 826-5221

BLEVENTHALHVAC@OPTIMUM.NET

TWO TERRY LANE, WANTAGH, NEW YORK 11793



**CUSTOM
COMPUTER
SPECIALISTS, INC.**

Right People. Right Results.®

Michael J. Inzerillo
Senior Manager

Data Center Assessment and Design

Direct: (631) 630-1203
Cell: (631) 291-5490
mjinzerillo@customonline.com
www.customonline.com

70 Suffolk Court, Hauppauge, NY 11788

SIEMENS

Industry

Siemens Industry, Inc.
Building Technologies Division

50 Orville Drive
Bohemia, NY 11716
USA

Tel: +1 631 218-1000 Ext. 214
Fax: +1 631 218-1009
Mobile: +1 516 924-2913
vincent.catalano@siemens.com
us.siemens.com/buildingtechnologies

Vincent Catalano, C.E.M.
Account Manager



**BEST
CLIMATE CONTROL CORP.**
75 ORVILLE DRIVE
BOHEMIA, NY 11716

AIR CONDITIONING
SYSTEMS

MICHAEL O'ROURKE

TEL (631) 218-8022
FAX (631) 218-8023

Established 1959



County Fair Air Conditioning Corporation
253 GRAND BLVD • WESTBURY, NY 11590-3599
(516) 997-6606 • (718) 347-7808 • FAX (516) 997-5741
choigereen@countyfair.com • mnathan@countyfair.com

CARL HOLGERSON RONALD J. NATHAN
Owner Owner

MECHANICAL CONTRACTORS • SALES • SERVICE • ENGINEERING

ADVERTISEMENTS

Retrofit energy savings into your next building upgrade.



Start with retrofit offers from National Grid.

If retrofitting existing commercial, institutional, and industrial facilities is an important part of your services, you know that incorporating energy efficiency measures into planned upgrades can add value to your clients' buildings and your business. We're here to help with money-saving financial incentives for lighting, HVAC/R, electric motors, retro-commissioning, and energy management system projects.

Learn more about how our retrofit offers can add value to your next upgrade project.

Call 844-280-4325 or visit myngrid.com/retrofit today.



nationalgrid

HERE WITH YOU. HERE FOR YOU.

ADVERTISEMENTS

EFFICIENCY IS EVERYTHING.



VRV III
THE INTELLIGENT AIR CONDITIONING SYSTEM



Daikin AC is pleased to announce the **VRV III PB** series.

This new iteration of VRV III is available in sizes ranging from 6 to 30 tons and is rated in accordance with AHRI standard 1230-2010. VRV III PB has been designed and optimized to meet or exceed the latest minimum efficiency requirements in 10 C.F.R. Part 431 as determined by the U.S. Department of Energy (DOE) and efficiencies as defined by ASHRAE 90.1-2010. With this new efficiency data, Daikin positions its VRV system as one of the most efficient heating and air conditioning systems available in the North American market as well as the efficiency leader in the VRF market.

Contact our local Daikin AC sales engineers in New York City:

- Ray Schmitt: 631-335-7116 - ray.schmitt@daikinac.com
- Steve Handelman: 917-968-9332 - steve.handelman@daikinac.com



Try a Better Perspective, try Daikin AC

866-4DAIKIN
www.daikinac.com

DAIKIN AC
absolute comfort



**PLACE YOUR
AD HERE**

**chimney
DESIGN
solutions®**

134 W. 29TH ST., 11TH FL., NY, NY 10001
800-685-7077 FAX: 212-685-4777
chimney design solutions.com

Advertising Rates:

Business Card \$200

Triple Size \$350

Half Page \$500

Full Page \$800



Visit the **Wales-Darby Energy Learning Center** at
2910 Express Drive South
Islandia, New York 11749
631.585.6800 Comm'l FAX: 631.471.4950
e-mail us at info@walesdarby.com
visit our website at www.walesdarby.com