

February 2005

THE LONG ISLAND SOUNDER



ASHRAE Long Island Chapter, Region 1...*Founded in 1957*

www.ashraeli.org

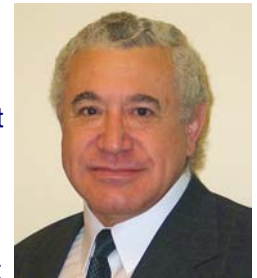
American Society of Heating, Refrigerating and Air Conditioning Engineers, Inc.

Inside this issue:

| | |
|----------------------------------|-------|
| President's Message | 1 |
| Meeting Information | 1 |
| LI Chapter Officers & Committees | 2 |
| January Mtg Recap | 3 |
| Meeting Schedule | 3 |
| February Program | 4 |
| BOG Meeting Minutes | 5 |
| General Meeting Min. | 6 |
| Membership | 6 |
| LI Chapter Past Pres. | 6 |
| PAOE | 6 |
| History | 7 |
| Resource Promotion | 7 |
| Annual Engineer's Wk | 8 |
| CTTC | 9 |
| Orlando Region I Dinner | 10 |
| ASHRAE Awards Prog | 11 |
| ASHRAE Tech Library | 11 |
| Classifieds | 12 |
| Advertisements | 12,13 |

President's Message

CALL FOR VOLUNTEERING - As you know, ASHRAE is a volunteer-driven organization. At our local level, activities like the preparations for the next monthly meeting or the coordination of Student activities with local Colleges exist only thanks to the effort of members in your chapter. My appreciation and respect goes to the effort of this year's chapter's officers and members and their remarkable contribution. I invite you to find the names of these talented colleges in this newsletter. As we have done it in the past, the Chapter will be looking for new candidates to fill next year's open positions.



If you are interested in participating more actively in ASHRAE, a good place to start is your local chapter. Please get in touch with any officer or drop me a short email. As a fringe benefit, you will have the unique opportunity to develop your communication, managerial and leadership skills. Our chapter needs your ideas and enthusiasm.

FEBRUARY MEETING - February is our traditional joint meeting with New York, New Jersey and Bi-State Chapters. This year we are honored to welcome our distinguished guest, ASHRAE President Elect Lee W. Burgett, P.E., ASHRAE Fellow. Mr. Burgett's lecture called "ASHRAE: Codes and Standards" will develop an understanding of how ASHRAE codes and standards influence the practice of HVAC&R engineering today, and how proposed policy might influence the future. The presentation will begin with an historical perspective leading to early ASHRAE involvement in safety codes and the more recent development of high profile standards for energy efficiency and indoor air quality.

Due to space and security reasons the event will be with pre-registration only. There will be no admission at the door at this time. This memorable presentation is the highlight of our year's chapter program, and we strongly recommend that you make early reservations, as seats will be filled in a first-come first-serve basis. See instructions in promotional material.

Please note that the meeting will be held on Wednesday, February 16, 2005, at the United Nations International School (UNIS). Please refer to further details in the newsletter "Programs" section.

We hope you can join us for this memorable occasion.

Claudio Darras, P.E.
President - Long Island Chapter

CHAPTER MONTHLY MEETING

| | |
|--------------|---|
| DATE: | Wednesday, February 16, 2005 |
| TIME: | 5:30 PM - Cocktails 6:45 PM - Presentation 7:50 PM - Dinner |
| LOC.: | UN INTERNATIONAL SCHOOL 24-50 FDR Drive, NYC Ph: 212-684-7400 / www.unis.org |
| FEES: | PRE-REGISTRATION ONLY |
| Members - | \$50.00 |
| Guest - | \$60.00 |
| Student - | \$25.00 |

RSVP 2/11/05 via email to:
jsantilli@accuspecinc.com

Long Island Chapter Officers & Committees

ASHRAE 2004/2005 OFFICERS

| POSITION | NAME | PHONE | FAX | E-MAIL |
|---------------------|------------------------|----------------|----------------|-------------------------------|
| President | Claudio Darras, P.E. | (212) 354-5656 | (212) 354-5668 | cdarras@akf-eng.com |
| President-Elect | Craig D. Marshall P.E. | (203) 261-8100 | (203) 261-1981 | cmarshall@accuspecinc.com |
| Vice President | John Nally | (631) 331-0215 | (631) 928-4625 | jn@atidfny.com |
| Financial Secretary | Peter Gerazounis, P.E. | (212) 643-9055 | (212) 643-0503 | pgerazounis@mgjassociates.com |
| Treasurer | Steven Friedman | (212) 253-7303 | (212) 253-6512 | sfriedman@tsfengineers.com |
| Secretary | Steven Giammona, P.E. | (212) 643-9055 | (212) 643-0503 | stevengiammona@optonline.net |
| Board of Governors | Richard E. Gerbe | (516) 484-1020 | (516) 484-0926 | reg@leapc.com |
| Board of Governors | James Hayes | (201) 247-7286 | (718) 228-6721 | jhayes@geru-usa.com |
| Board of Governors | Andrew S. Braum, P.E. | (516) 785-4200 | (516) 785-9148 | asb@asbengineering.com |

ASHRAE 2004/2005 COMMITTEES

| COMMITTEE | NAME | PHONE | FAX | E-MAIL |
|--|--|----------------------------------|----------------------------------|---|
| Programs and Special Events | Craig D. Marshall, P.E. | (203) 261-8100 | (203) 261-1981 | cmarshall@accuspecinc.com |
| Membership | Steven Giammona, P.E. | (212) 643-9055 | (212) 643-0503 | stevengiammona@optonline.net |
| Chapter Technology Transfer | Richard E. Gerbe | (516) 484-1020 | (516) 484-0926 | reg@leapc.com |
| Newsletter Editor | Steven Friedman Liset Pena | (212) 253-7303 (212) 643-9055 | (212) 253-6512 (212) 643-0503 | sfriedman@tsfengineers.com lpena@mgjassociates.com |
| Resource Promotion | Peter Gerazounis, P.E. | (212) 643-9055 | (212) 643-0503 | pgerazounis@mgjassociates.com |
| Historian | John Nally | (631) 331-0215 | (631) 928-4625 | jn@atidfny.com |
| Student Activities | John Nally | (631) 331-0215 | (631) 928-4625 | jn@atidfny.com |
| Webmaster | James Hayes | (201) 247-7286 | | jhayes5598@aol.com |
| Honors, Awards & Publicity | Ray Schmitt | (631) 585-6800 | (631) 471-4950 | therevrgs@aol.com |
| Nominating | Michael Gerazounis, P.E. | (516) 482-3207 | (516) 482-3790 | mgerazounis@mgjassociates.com |
| CRC General Chair | Alan Goerke, P.E. Frank Morgigno | (631) 331-0215 (631) 331-0215 | (631) 928-4625 (631) 928-4625 | ag@atidfny.com fm@atidfny.com |
| Reception and Attendance | Nancy Roman Carolyn Arote | (516) 556-4800 (516) 556-4800 | (516) 256-3299 (516) 256-3299 | nroman@airdist.com carote@airdist.com |
| Public Relations & Engineering Joint Council of LI | Richard E. Gerbe | (516) 484-1020 | (516) 484-0926 | reg@leapc.com |
| Golf Outing | Alan Goerke, P.E. Craig D. Marshall, P.E. | (631) 331-0215 (203) 261-8100 | (631) 928-4625 (203) 261-1981 | ag@atidfny.com cmarshall@accuspecinc.com |

Editor's Note: The appearance of any technical data, editorial material, or advertisement in this set of publications does not constitute endorsement, warranty or guaranty by ASHRAE of any product, service, procedure, design, or the like. ASHRAE does not warrant that information is free from errors, and ASHRAE does not necessarily agree with any statement or opinion in this set of publications. The entire risk of the use of any information in this set of publications is assumed by the user. Statements made in this publication are not expressions of the Society or of the Chapter and may not be reproduced without special permission.

January Meeting Recap

In January we had our joint meeting with the "Air Conditioning Contractors of America – Greater NY" (ACCA). We were honored by the visit of Lynn Bellenger, P.E. ASHRAE Director and Regional Chair – Region 1. Our guest speaker for this meeting was Lawrence Schoen, P.E., Fellow of ASHRAE and Principal of Schoen Engineering. Lawrence discussed the recent updates in the new ANSI/ASHRAE Standard 62.1-2004, "Ventilation for Acceptable Indoor Air Quality". Our sincere thanks go to Lawrence for coming from Maryland to deliver such an insightful presentation. We are pleased to announce that Lawrence's presentation is available for download from our website (www.ashraeli.org).





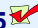


ASHRAE Std. 62.1-2004 will incorporate 17 Addenda. The standard is written in mandatory and enforceable language, completing a process that began in 1997. Copy of the revised STD 62.1-2004 can be ordered from Society's bookstore at www.ashrae.org. Its cost is \$60 (\$48, ASHRAE members).

Our thanks to Anthony Carbone President and members of ACCA – Greater NY for their enthusiastic contribution to a successful joint meeting.

Claudio Darras, P.E.
President - Long Island Chapter

Chapter Monthly Meeting - Program for 2004/2005

| | |
|---|---|
| September 14, 2004 * At Westbury Manor  Dinner Presentation - The Mechanical Engineer's Role in Sustainable Design & The LEED Rating Sys | March 8, 2005 FIELD TRIP Island Aire Facility Ronkonkoma, NY PTAC Units & Water Source Heat Pumps |
| October 12, 2004 * At Westbury Manor  ASHRAE DISTINGUISHED LECTURER Dinner Presentation - Buying or Selling, The Nuts & Bolts of Commissioning | April 12, 2005 * At Westbury Manor MENTOR NIGHT Dinner Presentation - VAV System Design |
| November 9, 2004 * At Westbury Manor  JOINT MEETING WITH SMACNA-LI Dinner Presentation - HVAC Essentials | April 13, 2004 * Location TBD ASHRAE Satellite Broadcast - Mold in our Building Environment |
| December 2004  Holiday Cocktail Party @ Westbury Manor | May 10, 2005 * At Westbury Manor REFRIGERANT NIGHT Dinner Presentation - Trade-Offs in Refrigerant Selections |
| January 11, 2005  JOINT MEETING WITH ACCA-LI Dinner Presentation - ASHRAE 62 Most Recent Updates | May 2005 ANNUAL CHAPTER GOLF OUTING |
| February 5-9, 2005 ASHRAE Winter Meeting and Trade Show, Orlando, FL www.ashrae.org / www.ahrexpo.com | June 14, 2004 * At Westbury Manor PAST PRESIDENTS & OFFICER INSTALLATION Dinner Presentation - ASHP - Compounding Facilities Requirements for Hospitals |
| February 16, 2005, UN International Plaza, NYC Joint Meeting with NYC, Bi-State & NJ Chapters (ASHRAE President Elect 2004-2005) | June 2005 ASHRAE Annual Meeting |
| February 23, 2005 - NATIONAL ENGINEERS WEEK Dinner | |

August 2005 - Chapter Regional Conference Region I - New Jersey

February Chapter Meeting - Program

**You are cordially invited to our Annual Joint Meeting
with the NYC, NJ and Bi-State Chapters...**



Dinner Presentation

“ASHRAE Codes and Standards ”

Presented by

Lee Burgett, P.E.

ASHRAE SOCIETY PRESIDENT - ELECT

**LI Chapter
Annual
Joint Meeting
2/16/05!**

| | | | |
|---------------------------|---|-------------|---|
| DATE: | WEDNESDAY, FEBRUARY 16, 2005 | | |
| Time: | 5:30 PM – Cocktails and Hors D'oeuvres 6:45 PM – Presentation 7:50 PM – Dinner | Fee: | \$ 50.00 Member \$ 60.00 Guest \$ 25.00 Student |
| LOCATION: | UNITED NATIONS INTERNATIONAL SCHOOL, 24-50 FDR Drive, New York, NY 10010 Phone 212-684-7400 (www.unis.org) | | |
| Presentation: | <p>The objective of this month's presentation will be to develop an understanding of how ASHRAE codes and standards influence the practice of HVAC&R engineering today, and how proposed policy might influence the future. The presentation will begin with an historical perspective leading to early ASHRAE involvement in safety codes and the more recent development of high profile standards for energy efficiency and indoor air quality. The audience will develop a perspective of the variety of constituents that these documents address, and the intent of the several types of documents used including codes, standards, guidelines, handbooks, and special publications. Special emphasis will be placed on distinguishing between "standard of care" and "best practice".</p> <p>For ASHRAE members and the general public, it is important to understand how individuals and organizations can be involved in the development process and how Society policy impacts that involvement. The presentation will describe some of the elements leading to our current policy position and contrast the impact of proposed policy with that currently in effect.</p> <p>ASHRAE leadership has been considering a wide variety of issues from various interest groups. Since this meeting immediately follows the winter Society meetings in Orlando, the presentation will provide a summary of those deliberations and solicit further input.</p> | | |
| About our Speaker: | <p><u>Lee Burgett, P.E., ASHRAE Society President Elect</u> is a member of the ASHRAE Board of Directors and the executive committee and chairs the president-elect advisory committee and member's council.</p> <p>He served on the ASHRAE Board of Directors as treasurer in 2003-04, vice president in 2000-02 and director-at-large in 1997-2000. Mr. Burgett has been active in ASHRAE standards, writing standards and policy oversight. He has written a number of technical papers and articles published by ASHRAE and others. He is an ASHRAE Distinguished Service Award recipient. Mr. Burgett has a B.S. and a M.S. in Mechanical Engineering from Michigan State University and a M.B.A. from University of Wisconsin.</p> | | |
| RSVP: | <p>Please RSVP via email at jsantilli@accuspecinc.com - Before 2/11/05, Noon Time</p> <p>Please make checks out to: LI ASHRAE Chapter</p> <p>Mail to: Accuspec Inc, 856 Main St Monroe CT, 06468, Attn: ASHRAE Meeting</p> <p>No cancellations or reimbursements after February 14, 2005</p> | | |

CHAPTER MAY NOT ACT FOR SOCIETY

An International Organization

Board of Governors - Meeting Minutes

Meeting of the Board of Governors was held on 1/12/05 at the Westbury Manor. Present at the meeting were: Claudio Darras, Rich Gerbe, Peter Gerazounis, Steve Friedman, Craig Marshall, Steve Giammona, John Nally and Lynn Bellenger.

Meeting called to order by Claudio Darras at 5:11 PM:

General – Claudio Darras requested help for next months joint meeting with the NYC, Bi-State and NJ Chapters. Lee Burgett will be the Distinguished Lecturer and it will be held in the same place as last year, the UN building in NYC. Steve Giammona will help with registration. Claudio has set up catering.

Also discussed was that the June meeting will be past Presidents night.

CRC – Alan Goerke reviewed final income vs. expenses for CRC. Alan Goerke indicated that CRC operated +\$ 3,000. Half will be given to the region and half to the chapter operating expenses. The check will be written to Gary Meyers and the CRC account closed within two weeks

Treasury – Steve Friedman reviewed funds. Accounts show positive flow. He must review with the account final tax forms and submission. Impact of electronic newsletters has been +\$1800 on account since August.

Programs – Programs are set for the year. The field trip will be to Island air factory in Ronkonkoma, NY. They manufacture under window terminal PTAC units. Craig also wants to finalize (CEU) values for meetings. This is still an open issue that must be resolved. He needs to show in the newsletter which program nights will be accredited (Craig Marshall to advise).

Reception – To issue badges with names, which would indicate that they paid to attend.

Membership- The e-mail list has been reviewed and has been updated by Liset. Three people expressed interest in joining last month. They have been contacted via e-mail.

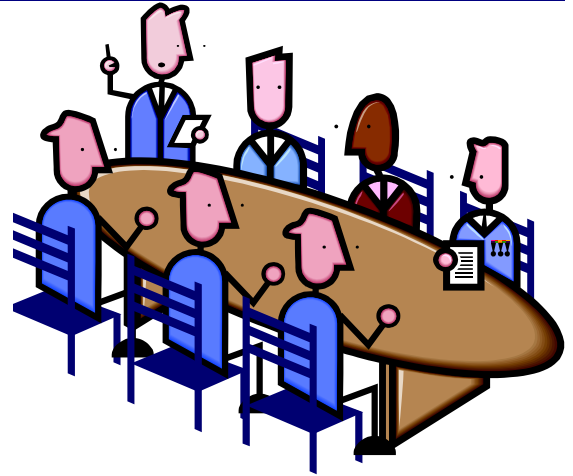
Newsletter – Steve Friedman discussed that the advertisement sections in the newsletter needed to be reviewed. There was some late payment on the advertising. However, this is getting cleared up by proper payment. Steve Friedman asked if anyone has comments on newsletter. Articles for February Newsletter due January 25th. For all future inserts articles are due at least 3 weeks prior to meeting.

Resource Promotion – Peter Gerazounis reviewed the research promotion goals. Peter felt the RP goal would be met by the end of the year. The LI chapter received full circle status. to put together a summary to reach goals.

Student Activities- John Nally has updated PAOE points. John expressed interest in revitalizing the Rube Golberg contest for student during “Engineers Week”. Student nights need to be assigned it was decided to be in November and in May.

CTTC – Rich Gerbe discussed the ASHRAE Learning Institute. He is trying to arrange a day in May. The location may be in Hofstra or NY tech. He is also working on setting up the next satellite broadcast. The details will follow at the next meeting.

Steven Giammona, P.E.
Chapter Secretary



General Meeting Minutes

Meeting was called to order at 6:45 by Claudio Darras: This was a joint meeting with ACCA.

Craig Marshall discussed future meeting programs Claudio Darras mentioned our upcoming events. Introduced our guest speaker, Mr. Lawrence J Schoen, P. E.. Lawrence gave an excellent lecture on the ASHRAE 62 " Most Recent Updates on design, start up and Maintenance. Meeting adjourned at 9:00 pm.

Steven Giammona, P.E.
Chapter Secretary

Membership

The membership interest has been very good so far this year. I want to thank all members who have been urging co-workers to get involved. I would like to mention the latest members to our chapter:

| | |
|-------------------------|--------------------------|
| Richard Barcia | David Bloom |
| Aldo Bravo | Xian Chen |
| Kevin Cirincione | Gaetano D'Antonio |
| John Ferris | Jayson Gajowski |
| Jeremy Latterman | Edward Loveland |
| Chris Malanga | John Restaino |
| Carl Romano | Terrence Skidmore |
| Michael Star | Joshua Zweback. |

Please help me in welcoming them during the next meeting. Please contact me if there are any membership questions that I can be of help.

I look forward to seeing everyone at our February Meeting.

Steven Giammona, P.E.
Membership Chair

**March's
Newsletter Articles
Due: 2/21/05**

**Newsletter to be
Issued: 2/28/05**

Long Island Chapter - Past Presidents

| | | | |
|------|---------------------|------|------------------------|
| 1958 | H. Campbell, Jr. PE | 1981 | Robert Rose, PE |
| 1959 | Clyde Alston, PE | 1982 | Timothy Murphy, PE |
| 1960 | Sidney Walzer, PE | 1983 | Leon Taub, PE |
| 1961 | Sidney Gayle | 1984 | Raymond Combs |
| 1962 | William Kane | 1985 | Edward W. Hoffmann |
| 1963 | Louis Bloom | 1986 | Jerome T. Norris, PE |
| 1964 | Milton Maxwell | 1987 | Abe Rubenstein, PE |
| 1965 | Will Reichenback | 1988 | Michael O'Rourke |
| 1966 | Joseph Minton, PE | 1989 | Mel Deimel |
| 1967 | Irwin Miller | 1990 | Robert Rabell |
| 1968 | Walter Gilroy | 1991 | Gerald Berman |
| 1969 | Charles Henry | 1992 | Donald Stahl |
| 1970 | William Wright | 1993 | Ronald Kilcarr |
| 1971 | Louis Lenz | 1994 | Gerald Griliches |
| 1972 | Ronald Levine | 1995 | Walter Stark |
| 1973 | Henry Schulman | 1996 | Joe Marino |
| 1974 | Myron Goldberg | 1997 | Norm Maxwell, PE |
| 1975 | John N. Haarhaus | 1998 | Alan Goerke, PE |
| 1976 | Richard K. Ennis | 1999 | Frank Morgigno |
| 1977 | Kenneth A. Graff | 2000 | Michael Gerazounis, PE |
| 1978 | Evans Lizardos, PE | 2001 | Ray Schmitt |
| 1979 | Albert Edelstein | 2002 | Steven M. Stein, PE |
| 1980 | Ralph Butler | 2003 | Andrew Braum, PE |

RUNNING PAOE POINTS FOR 2004/2005

| Chapter Members | Membership Promotion | Student Activities | Resource Promotion | History | Chapter Operations | CTTC | Chapter PAOE Totals |
|-----------------|----------------------|--------------------|--------------------|---------|--------------------|------|---------------------|
| 353 | 0 | 290 | 73 | 275 | 0 | 550 | 1188 |

History - "The Test of Time"

A part of my job that I enjoy is performing field surveys of existing older buildings. Usually I am assisting a design engineer or contractor with a retrofit of the old heating equipment. It's fun to look over an old heating plant and try to read into the buildings history. You can usually see from the various equipment vintages, when building additions were added, fuels sources were changed, equipment failed or other system modifications were made. One recent survey however was a little different. It was like a journey back in time and into the twilight zone.

The building was originally a school, later closed and leased out to the county and now once again is used as a school. The one constant was the maintenance fellow who had been working there for "many" years. He was one of those types that kept everything spit shined and in good operation. As I stepped into the boiler room I was impressed by the cleanliness, bright lighting and obvious care this equipment had seen. I placed the installation somewhere in the late 1950's and amazingly almost all of the original equipment was still operational. Vacuum tubes were glowing, old gauges actually moving, antique motors were running and the faint smell of old wiring insulation hung in the air. Wow this room was really something but at the same time was a little strange. The equipment wasn't providing many clues about the building's history but one message came through very clear. This heating plant was a testament to good design, attention to details, proper installation and systematic maintenance. I finished my survey and was at the top of the stairs leaving when something made me turn around a look at the back of a control panel in the far corner. Seeing something shiny and curiosity getting the best of me, I went back down and found a small brass engraved plate on the back of the control panel. Engraved on it was the job name and engineer of record, Mr. Clyde Alston P.E.

The late Mr. Alston was one of the founding fathers of our chapter and served as President in 1959. He ran a successful engineering practice and participated in our chapter for over thirty years. Clyde was responsible for the mechanical design in a number of buildings in our area. I had the pleasure of working with Mr. Alston on projects in the past and I can say he gave careful consideration to design and detail. We learn from our past and there is a valuable lesson here. That design and details really do matter and they become essential for the ultimate test, the test of time.

John Nally
Chapter Historian

Resource Promotion

I would like to thank those who have contributed to Resource Promotion. Unfortunately, for the past three months donations have nearly ceased. As consulting engineers, contractors and sales engineers, we need to remember that ASHRAE Resource Promotion is the key to quality assurance in our industry.

With technical, environmental and legal issues on the forefront, we as a community need to support the efforts of those researching new and existing technologies.

If you have not made a contribution yet, please consider a small donation to ASHRAE Research. For those of you who wish to contribute on line, please go to www.ASHRAE.org and click on the "contribute on line" link (left side of page). Please consider sending your donation and continue to support the industry that supports your profession. I encourage all member and non-members to attend our monthly meetings. Please bring a check to show your support or send your check by mail to my attention.

Thank you and look forward to seeing you at the meeting.

Peter Gerazounis, P.E.
Resource Promotion Chair



Annual Engineers Week Dinner



Engineers Joint Committee of Long Island

Louis J. Errichiello, P.E., Chairman

***You are Cordially Invited to Attend the
ANNUAL ENGINEERS WEEK DINNER
Wednesday, February 23, 2005***

This dinner highlights the activities for Engineers Week. The enthusiastic support of the engineering community is requested:

Place: The Sterling, 345 Hicksville Road, Bethpage, NY 516-931-7600
Cocktails at 6:00 pm followed by Dinner at 7:00 pm

Keynote Speaker: Dr. Harry Armen - "Engineering Leadership in a Global Economy"
President, American Society of Mechanical Engineer

Achievement Awards: **Charles F. Vachris, P.E.,** *Principal, Vachris Engineering*
Richard Lenz, P.E., *Commissioner of Public Works, Town of Oyster Bay*
Anthony Castrogiovanni, Ph.D., *President, ATK GASL*
Stanley M. Greenwald, P.E., *Chairman of Engineering Technology Department, NYIT*

Distinguished Service Award: **Morton H. Rochman, P.E., CMfgE - EJCLI Officer Emeritus**

To confirm your reservation, please complete and return the form below by February 16, 2005, with your check to: Martin Fein, 2940 Lonni Lane, Merrick, NY, 11566. Phone @ ASQ: (516) 868-5305, Fax: (516) 868-5305. asqlimf@aol.com

ENGINEERS WEEK DINNER - Wednesday, February 23, 2005

_____ Reservations @ \$50.00 per person - \$500 per table of ten Amount Enclosed _____

Make check payable to: Engineers Joint Committee of LI

Name (s) _____

Company/Address _____

MEMBER SOCIETIES

New York State Society of Professional Engineers

- Nassau Chapter
- Suffolk Chapter

American Institute of Aeronautics & Astronautics

Institute of Industrial Engineers

American Society of Civil Engineers

Institute of Electrical & Electronic Engineers

American Society of Heating Refrigeration & Air Conditioning Engineers

American Society of Mechanical Engineers

Society of Women Engineers

NY Association of Consulting Engineers

Society of Manufacturing Engineers

American Society for Engineering Education

American Society for Quality

Polytechnic University

Farmingdale State University

Stony Brook University

Hofstra University

Instrument Society of America

Long Island Forum for Technology

Nassau Technology Education Association

Suffolk Technology Education Association

CTTC

Green Building Design Made Easier With ASHRAE Standard 90.1-2004

Making the American Society of Heating, Refrigerating and Air-Conditioning Engineers' (ASHRAE) energy conservation standard easier to use should lead to greater energy savings and greener buildings. ANSI/ASHRAE/IESNA Standard 90.1-2004, *Energy Standard for Buildings Except Low-Rise Residential Buildings*, provides minimum requirements for the energy-efficient design of buildings except low-rise residential buildings.

"Standard 90.1-2004 has undergone a dramatic makeover, resulting in a document with a more readable format that is easier to use for practitioners," Jerry White, chair of the standard committee, said. "New technical requirements and stringency levels are presented in a more consistent format, making them easy to find and apply to building designs." By making the standard easier to use, it will be used more, according to White. More use would result in more energy being saved.

The standard contains a new informative appendix to rate the energy efficiency of building designs that exceed its minimum requirements. The guidance provided in this appendix should be beneficial to HVAC designers who are trying to achieve the required points for either a Silver or Gold Leadership in Energy and Environment Design (LEED) certification of a facility, according to White.

For designers who are participating in a LEED-certification design, the standard's energy cost budget method was produced in collaboration with representatives of the U.S. Green Building Council.

Changes to major sections of the standard include:

Lighting

- Revised interior lighting power limits are generally more restrictive than the 2001 standard values. The values are an average of 25 percent more stringent and will require more careful lighting design in some applications.
- A new exterior lighting section includes specific lighting power limits for a variety of exterior applications.

Mechanical

- The mechanical section has been reorganized to make it easier to read. New climate zone data further simplifies many of the mechanical requirements from economizer requirements to duct insulation.
- In addition, energy efficiencies were increased for fans, single package vertical units and 3-phase air-cooled air conditioners.

Climate Zones

- The number of primary climate zones for heating and cooling was reduced to eight from 26. Each county in the United States has been mapped to a particular climate zone. As a result, building envelope and mechanical criteria will apply on a countywide basis, and often to many adjacent counties.
- Reducing the number of primary climate zones resulted in a reduction of the number of tables of building envelope criteria. This reduction results in simplification while minimizing the changes in the building envelope criteria.

Energy Cost Budget (ECB) Method

- A new table reformats requirements to show the symmetry between simulations of a design building model to a budget building model in the ECB method. This makes it easier to determine the efficiency of the design.

The standard is recommended for inclusion in the 2006 International Energy Conservation Code and the National Fire Protection Association 5000 Building Construction and Safety Code.

Richard E. Gerbe

Chapter Technology Transfer Committee Chair

Orlando Region I Dinner Invitation



ASHRAE Region I
Dinner – February 7, 2005
Monday Night
6:30 PM to 9:00 PM
Dinner begins at 7 P.M.



Please RSVP to
Andrew S. Braum
Region 1
asb@asbengineering.com

(516) 785-4200
Fax (516) 785-9148

Reservations are required

Planet Hollywood is an approximate 15 minute walk from the ASHRAE Headquarters Hotel and is in Downtown Disney allowing for an Enjoyable stroll after Dinner.

Producing Dazzling Events Is Our Bright Spot!

Choice of Caesar Salad or House Salad

Entrée Choice of:

Roasted Half Chicken

Lemon pepper and rosemary glazed roasted half chicken served with mashed potatoes
And sautéed green beans

New York Strip

USDA Choice center-cut 12 oz. Strip steak chargrilled medium served with a baked potato and seasonal vegetables

L.A Lasagna

Fresh pasta tubes filled with ricotta cheese and bolognese meat sauce fried to a golden brown And covered with garlic cream and tomato basil sauce

Grilled Salmon

Grilled 8 oz. Salmon filet glazed with maple butter served with mashed potatoes
And sautéed green beans

Dessert:

Chef's Selection of Dessert

Beverages:

Unlimited Soft Drinks, Coffee and Iced Tea

Price:

\$40.00 per person - Cash Bar

ASHRAE Awards Program

The deadline is drawing near for all interested firms to submit award applications for the Ashrae awards program. Please log on to www.ashrae.org for award descriptions and for the short form applications. Don't miss out on this easy way to gain notoriety for your firm and its employees.

The Ashrae Library for technology transfer is up and running. The Library is your source for borrowing Ashrae position papers, standards and handbooks, design manuals, codes, technical papers and more (see below for contact information). This technology transfer will be available at the monthly meetings and requests for information can be made throughout the month. In order for the library to be successful, members are asked to donate any books, manuals or materials relating to Ashrae or the HVAC/R industry.

If you are interested in getting involved or need additional assistance I can be contacted via telephone at Lizardos Engineering tel. 516 484-1020 or by e-mail at reg@leapc.com.

*Richard E. Gerbe
Chapter Technology Transfer Committee Chair*

ASHRAE Technology Transfer Library

The ASHRAE Technology Library is now available to all ASHRAE Long Island Members.

Now all members have local access to ASHRAE publications:

- **Handbooks**
- **Standards**
- **Technical Papers**
- **Software**
- **Guidelines**
- **Information on ASHRAE**
- **Bookstore Order Forms**

To borrow see our monthly display or contact:

Rich Gerbe at Lizardos Engineering

Tel: 516-484-1020

Email: reg@leapc.com

Contributions to the library are welcomed.



CLASSIFIEDS

**As a Courtesy to all Long Island Chapter Members,
All Classifieds Ads Submitted to the Newsletter will be Free of Charge.**

If you would like to place an ad advertising job opportunities or if you would like to advertise that you are looking for employment please contact our chapter's Treasurer, Mr. Steve Friedman via email at friedman@tsfengineers.com or at 212-253-7303 for further details.

Project Managers/Senior Engineers/ Engineers/Designers/CADD Operators - Consulting Engineering Firm located in midtown (near Penn Station) seeks experienced self-starters to join its team of highly skilled and dedicated professionals! We are looking for motivated Mechanical, Electrical, Plumbing and Fire Protection Project Managers, Senior Engineers, Engineers, Designers and CADD Operators to work on commercial and institutional projects. Bachelors degree required, plus minimum 4 years experience (10+ years experience for Project Manager level). Some supervisory/project management experience preferred. Must have excellent communication and interpersonal skills, proficient in AutoCAD; P.E. registration preferred. We offer an excellent benefits package including medical/dental/401k/ transportation flex. **Qualified candidates email resume to: resume@mgjassociates.com, or fax to: 212-643-0503.**

ADVERTISEMENTS

ME MASON EAST, Inc.
 Manufacturer's Representatives for
 Mason Industries, Inc.
 The Metreflex Company • Weiss Instruments, Inc.

631/254-2240 307 B Suburban Avenue
 Fax 631/254-2199 Deer Park, NY 11729

215/633-8355 Two Neshaminy Interplex, Ste 205
 Fax 215/633-8356 Trevoese, PA 19053

TWINCO STEVE BERGMAN

TWINCO SUPPLY CORP.
 TEMPERATURE CONTROLS
 MOTOR STARTERS
 PANEL DESIGN & FABRICATION
 HVAC SUPPLIES

55 CRAVEN STREET HUNTINGTON STATION, NEW YORK 11748-2143
 (631) 547-1100 NYS (800) 794-3188 FAX (800) 926-TWIN
www.twinco.com

RICK GASKA
 152 41st Street
 Brooklyn, NY 11232
 718-632-7900
 Fax: 718-965-9675

GILMOUR SUPPLY CO., INC.
 An Affiliate of DAVIDSON PIPE SUPPLY CO., INC.

180 Marne Street
 Farmingdale, NY 11735
 516-694-2800
 Fax: 516-694-7740

ANRON
 •HEATING & AIR CONDITIONING
 •SHEET METAL •SERVICE

440 WYANDANCH AVENUE, N. BABYLON, N.Y. 11704-1590
 (631) 643-3433 Ext. 310 FAX (631) 491-6983

**PLACE
YOUR
AD
HERE**

TEL (631) 218-8022
 FAX (631) 218-8023

BCC BEST CLIMATE CONTROL CORP.
 75 ORVILLE DRIVE
 BOHEMIA, NY 11716

AIR CONDITIONING SYSTEMS MICHAEL O'ROURKE

JAMES CASE

GBI GIL-BAR INDUSTRIES
 (718) 965-6600
 FAX (718) 965-6634

141 FORTY-SEVENTH STREET
 BROOKLYN, NY 11232

Frank D. Morgigno - CEO/COO fm@atiofny.com

ATI Applied Technologies Of NY, Inc.
 Manufacturers Representatives

415 Oser Avenue • Hauppauge, NY 11788
 Tel: 631-331-0215 • Fax: 631-928-4625
www.atiofny.com

BUSH WHOLESALERS
 MANUFACTURERS REPRESENTATIVE & DISTRIBUTOR

**Air Diffusion Products
 Fire & Smoke Control Devices
 Variable Volume Terminal Units
 Louvers & Dampers**

PHONE 718.624.5900 Fax 718.624.2505

Harold C. Smith, Jr., P.E.
 Consulting Mechanical Engineer

KEYSPAN Business Solutions
hsmith@keyspanservices.com

KeySpan Engineering Associates, Inc.
 1025 Old Country Road, Suite 420
 Westbury, NY 11590
 Tel: 516 512-7302
 Fax 516 512-7320

Wallace Eannace Associates, Inc.
www.wallaceeannace.com

Manufacturers Representatives
 50 Newtown Road
 Plainview, New York 11803
 516-454-9300
 Fax: 516-454-9307
 Cell Phone: 516-429-7185
 Home/Fax: 631-277-4737
 e-mail: jthuman@wallaceeannace.com

Joseph A. Thuman
 Special Projects—Engineered Products

**PLACE
YOUR
AD
HERE**

ADVERTISEMENTS



John Knowles Ray Schmitt
David Van Wickler



2910 Express Drive South
Islandia, New York 11749
(631) 585-6800 (718) 895-0410
(212) 912-1902
Commercial FAX: (631) 471-4950

Visit our website: www.walesdarby.com
e-mail us at: info@walesdarby.com



Eric M. Berkowitz
Managing Partner

989 Avenue of the Americas, New York, N.Y. 10018
Tel: 212-947-4000 Fax: 947-5003 e-mail: emberkowitz@mcquayny.com



Ultimate Power Inc.

631-491-1300
FAX 631-491-8551

INDUSTRIAL BURNERS • BOILERS
GAS • OIL • BURNER SERVICE • A/C INSTALLATION
ELECTRONIC CONTROLS
ENERGY CONSERVATION SYSTEMS
MECHANICAL CONTRACTORS FOR OVER 33 YEARS

RONALD MILANO 45 NANCY STREET
WEST BABYLON, NY 11704-1498
EMAIL: RMILANO@ULTIMATE-POWER.COM

**PLACE
YOUR
AD
HERE**

FRIGIDYNE
Air Conditioning Co., Inc.

www.frigidyne.com

AIR CONDITIONING, HEATING
DUST, FUME, AND MIST COLLECTION
TEMPERATURE AND LIGHTING CONTROL

ANDREW S. BRAUM, P.E.
asb@frigidyne.com (516) 785-9000
FAX: (516) 785-9148
1924 BELLMORE AVE.
BELLMORE, NY 11710

BERNE & BOB LEVENTHAL, INC.
BOB LEVENTHAL

GOVERNOUR CORP. KING CO.
ABB - VFD'S CLIMATE CRAFT
CHICAGO BLOWER COIL MASTER

Two Terry Lane PH 516 826-5270
Wantagh, NY 11793 FX 516 826-5277

**chimney
DESIGN
solutions**

VOICE: 212-685-7077 FAX: 212-685-4777
chimneydesignsolutions.com



288 Middle Island Road, Medford, NY 11763



Walter Stark
President

Nautica Dehumidifiers, Inc.
200-19 East Second Street, Huntington Station, NY 11746
Phone: (631) 424-8330 • Fax: (631) 251-4248
www.nautica-dehumid.com • www.nautica-usa.com

SIEMENS

Siemens Building Technologies, Inc
Landis Division

50 Orville Drive
Bohemia, NY 11716

Mel Deimel
Sr. Sales Engineer

Tel: (516) 218-1000
Fax: (516) 218-1009
melvinn.deimel@us.landisstaefa.com

**PLACE
YOUR
AD
HERE**

e-mail: cschiavone@savmor.net TEL: (631) 467-8585x125
www.savmormechanical.com FAX: (631) 467-8884



SALES • SERVICE • CONTRACTS

Energy Management Specialists

GANDOLFO J. SCHIAVONE 30 B HOWARD PLACE
VICE PRESIDENT RONKONKOMA, NY 11779



PENN VENTILATION

BARRY BLOWER

NAILOR INDUSTRIES

(Tel) 718.624.5900

(Fax) 718.624.2505

Established 1959



County Fair, Air Conditioning Corporation

233 GRAND BLVD • WESTBURY, NY 11590-3599
(516) 997-5656 • (718) 347-7808 • FAX (516) 997-5741
choigerson@countyfair.com • mathan@countyfair.com

CARL HOLGERSON RONALD J. NATHAN
Owner Owner

MECHANICAL CONTRACTORS • SALES • SERVICE • ENGINEERING

If you would like to place an advertisement in The Long Island Sounder please contact our Chapter Treasurer, Mr. Steve Friedman @ (212) 253-7303 for further details. Thank you.