

THE LONG ISLAND SOUNDER

June 2005



ASHRAE Long Island Chapter, Region 1...Founded in 1957

www.ashraeli.org

American Society of Heating, Refrigerating and Air Conditioning Engineers, Inc.

Inside this issue:

President's Message	1,3
Meeting Information	1
LI Chapter Officers & Committees	2
President's Message	3
Meeting Schedule	4
May Program	5
BOG Minutes	6
General Mtg Minutes	6
LI Past Presidents	7
Student Activities	7
PAOE	7
History	8
Resource Promotion	9
Craig Marshall Bio	10
Classifieds	11
Advertisements	11,12

President's Message

ANNOUNCEMENTS - As you may already know, our Chapter conducted the 6th Annual LI / NYC ASHRAE Golf Outing at Cherry Valley Club in Garden City, NY on May 16, 2005. The event was a complete success. Our sincere thanks to all who made it happen, and in particular to John Nally, Craig Marshall, Alan Goerke, and Frank Morgigno.



On another note, thanks to Rich Gerbe and Evans Lizardos, the Chapter's All-Day Seminar entitled "Economic Analysis of Engineering Projects" was a great accomplishment. From the opinions of those who attended the training, it was substantial training with a huge return on the time & effort invested (7PDHs). The Seminar was offered by ASHRAE Learning Institute on May 12 here in Mineola, LI.

As we look back on this season, we cannot but remember the great job that Alan Goerke, PE and Frank Morgigno did when they led the planning and managing committee that resulted in the 2004 CRC in Long Island (Chapter Regional Conference). Thanks Alan, Frank, and all the members that made it possible for a job well done.

MAY MEETING - Last month's speaker was James Calm, P.E, an engineering consultant and ASHRAE Fellow with a huge experience in his field. James offered a very informative update on ozone depletion & global climate change, and HVAC industry trends. If you were not able to attend to this presentation, you may download many of the support materials used in his presentation from his website at www.jamesmcalm.com.

Attendance at this presentation was worth 1.5 PDH credits, and if you attended it, your certificate will be waiting for you at the June chapter meeting.

LOOKING AHEAD - June is our last meeting of the season. Chapter meetings will resume on September 13, 2005. During this short summer recess, the 2005 CRC - Chapter Regional Conference - will take place in Long Branch, NJ, between Aug. 18th and 20th. This annual event is when our Region 1 Officers and Delegates of (15) Northeastern Chapters meet to conduct ASHRAE business, along with workshops for the new officers and committee chairs. In addition to these business sessions, there will be technical sessions, golf outing, and social activities, which are open to ASHRAE members. If you are interested in participating in any of these activities, please look for more details and instructions in this newsletter.

CHAPTER MONTHLY MEETING

DATE:	Tuesday, June 14, 2005
TIME:	6:00 PM - Cocktails/Dinner 6:30 PM - Changeover Presentation 7:15 PM - Dinner Presentation
LOCATION:	Westbury Manor South Side of Jericho Tpke. 25 Westbury, NY 11590
FEES:	
Members -	\$30.00
Guest -	\$35.00
Student -	\$15.00

*Reservations requested, but not required.
Call (516) 333-7117*

Cont'd. on Page 3

Long Island Chapter Officers & Committees

ASHRAE 2004/2005 OFFICERS

POSITION	NAME	PHONE	FAX	E-MAIL
President	Claudio Darras, P.E.	(212) 354-5656	(212) 354-5668	cdarras@akf-eng.com
President-Elect	Craig D. Marshall P.E.	(203) 261-8100	(203) 261-1981	cmarshall@accuspecinc.com
Vice President	John Nally	(631) 331-0215	(631) 928-4625	jn@atiofny.com
Financial Secretary	Peter Gerazounis, P.E.	(212) 643-9055	(212) 643-0503	pgerazounis@mgjassociates.com
Treasurer	Steven Friedman	(212) 253-7303	(212) 253-6512	sfriedman@tsfengineers.com
Secretary	Steven Giammona, P.E.	(212) 643-9055	(212) 643-0503	sgiammona@mgjassociates.com
Board of Governors	Richard E. Gerbe	(516) 484-1020	(516) 484-0926	reg@leapc.com
Board of Governors	James Hayes	(201) 247-7286	(718) 228-6721	jhayes@geru-usa.com
Board of Governors	Andrew S. Braum, P.E.	(516) 785-4200	(516) 785-9148	asb@asbengineering.com

ASHRAE 2004/2005 COMMITTEES

COMMITTEE	NAME	PHONE	FAX	E-MAIL
Programs and Special Events	Craig D. Marshall, P.E.	(203) 261-8100	(203) 261-1981	cmarshall@accuspecinc.com
Membership	Steven Giammona, P.E.	(212) 643-9055	(212) 643-0503	sgiammona@mgjassociates.com
Chapter Technology Transfer	Richard E. Gerbe	(516) 484-1020	(516) 484-0926	reg@leapc.com
Newsletter Editor	Steven Friedman Liset Pena	(212) 253-7303 (212) 643-9055	(212) 253-6512 (212) 643-0503	sfriedman@tsfengineers.com lpena@mgjassociates.com
Resource Promotion	Peter Gerazounis, P.E.	(212) 643-9055	(212) 643-0503	pgerazounis@mgjassociates.com
Historian	John Nally	(631) 331-0215	(631) 928-4625	jn@atiofny.com
Student Activities	John Nally	(631) 331-0215	(631) 928-4625	jn@atiofny.com
Webmaster	James Hayes	(201) 247-7286		jhayes5598@aol.com
Honors, Awards & Publicity	Ray Schmitt	(631) 585-6800	(631) 471-4950	therevrgs@aol.com
Nominating	Michael Gerazounis, P.E.	(516) 482-3207	(516) 482-3790	mgerazounis@mgjassociates.com
CRC General Chair	Alan Goerke, P.E. Frank Morgigno	(631) 331-0215 (631) 331-0215	(631) 928-4625 (631) 928-4625	ag@atiofny.com fm@atiofny.com
Reception and Attendance	Nancy Roman Carolyn Arote	(516) 556-4800 (516) 556-4800	(516) 256-3299 (516) 256-3299	nroman@airdist.com carote@airdist.com
Public Relations & Engineering Joint Council of LI	Richard E. Gerbe	(516) 484-1020	(516) 484-0926	reg@leapc.com
Golf Outing	Alan Goerke, P.E. Craig D. Marshall, P.E.	(631) 331-0215 (203) 261-8100	(631) 928-4625 (203) 261-1981	ag@atiofny.com cmarshall@accuspecinc.com

Editor's Note: The appearance of any technical data, editorial material, or advertisement in this set of publications does not constitute endorsement, warranty or guaranty by ASHRAE of any product, service, procedure, design, or the like. ASHRAE does not warrant that information is free from errors, and ASHRAE does not necessarily agree with any statement or opinion in this set of publications. The entire risk of the use of any information in this set of publications is assumed by the user. Statements made in this publication are not expressions of the Society or of the Chapter and may not be reproduced without special permission.

President's Message (Cont'd. From Page 1)

NEW CHAPTER LEADERSHIP - Finally, I'm pleased to introduce to you a selected group of enthusiastic and motivated members who will serve and lead our Chapter next year:

2005-06 OFFICERS

Craig Marshall, P.E. Chapter President
John Nally, President Elect
Peter Gerazounis, P.E., Vice President,
Richard Gerbe, Recording Secretary
Steve Giammona, P.E., Treasurer
Steven Friedman, Financial Secretary

BOARD OF GOVERNORS

(in addition to above Officers)

Nancy Roman
James Hayes
Claudio Darras, P.E.

COMMITTEES CHAIRPERSON

John Nally, Programs
Claudio Darras, P.E., CRC Delegate
Craig Marshall, P.E., CRC Alternate
Peter Gerazounis, P.E., Membership
Steven Friedman, Student Activities
Richard Gerbe, Chapter Technology Transfer
Steve Giammona, P.E., Resource Promotion
Peter Gerazounis, P.E. & Liset Pena, Newsletter Editors
Carolyn Arote, Website Editor
John Nally, Historian

If you are ready to participate more actively in the activities of ASHRAE LI Chapter, please contact Craig, who is still looking for selected members to fill additional positions.

I want to give a special thanks on behalf of the Chapter to Liset Pena, for being editor and producer of our newsletter. Our appreciation goes to Mike Gerazounis - MGJ Associates - for authorizing her involvement in it during working hours. Each month, we look forward to learning about the new activities in our chapter, thanks to Liset's creativity and persistence.

It was my pleasure to serve you as this year's chapter president. As the end of my term has arrived, I want to mention that the Chapter could not be left in better hands than the team that Craig will head. I encourage you to continue supporting them and participating with them as you did last year.

You are cordially invited to join us to celebrate the installation of the new 2005-06 Chapter Officers at our last chapter meeting of the season, and enjoy a great technical presentation that has been arranged for this occasion (see more details included).

We hope that you can make it.

Claudio Darras, P.E.
President - Long Island Chapter

Chapter Monthly Meeting - Program for 2004/2005

September 14, 2004 * At Westbury Manor  Dinner Presentation - The Mechanical Engineer's Role in Sustainable Design & The LEED Rating Sys	March 8, 2005  FIELD TRIP - Cancelled due to Weather Island Aire Facility Ronkonkoma, NY PTAC Units & Water Source Heat Pumps
October 12, 2004 * At Westbury Manor  ASHRAE DISTINGUISHED LECTURER Dinner Presentation - Buying or Selling, The Nuts & Bolts of Commissioning	April 12, 2005 * At Westbury Manor  MENTOR NIGHT Dinner Presentation - VAV System Design
November 9, 2004 * At Westbury Manor  JOINT MEETING WITH SMACNA-LI Dinner Presentation - HVAC Essentials	April 13, 2004 * AKF Engineers, NYC  ASHRAE Satellite Broadcast - Mold in our Building Environment
December 2004  Holiday Cocktail Party @ Westbury Manor	May 10, 2005 * At Westbury Manor  REFRIGERANT NIGHT Dinner Presentation - Air Conditioning & Global Warming
January 11, 2005  JOINT MEETING WITH ACCA-LI Dinner Presentation - ASHRAE 62 Most Recent Updates	May 12, 2005 * 200 Old Country Road, Mineola, NY  ALL DAY SEMINAR- Economic Analysis of Engineering Projects
February 5-9, 2005  ASHRAE Winter Meeting and Trade Show, Orlando, FL www.ashrae.org / www.ahrexpo.com	May 16, 2005 * Cherry Valley Club, Garden City, NY  ANNUAL GOLF OUTING
February 16, 2005, UN International Plaza, NYC  Joint Meeting with NYC, Bi-State & NJ Chapters (ASHRAE President Elect 2004-2005)	June 14, 2005 * At Westbury Manor PAST PRESIDENTS & OFFICER INSTALLATION Dinner Presentation - ASHP - Compounding Facilities Requirements for Hospitals
February 23, 2005 - NATIONAL ENGINEERS WEEK Dinner 	June 25-29, 2005 * Denver, CO ASHRAE Annual Meeting
August 18-20, 2005 - Chapter Regional Conference Region I Ocean Place Resort & Spa, Long Branch, NJ	

June Chapter Meeting - Program

You are cordially invited to our June 2005 Meeting



Dinner Presentation

“Environmental Requirements for Compounding Sterile Products”

Excellent Presentation for Anyone Involved with the Healthcare or Hospital Industry...

Presented by

James T. Wagner - Controlled Environment Consulting

DATE:	TUESDAY, JUNE 14, 2005		
Time:	6:00 PM – Cocktails and Hors D'oeuvres 6:30 PM – Change Over Ceremony 7:00 PM – ASHRAE Technical Committee Update on Dehumidification 8:15 PM – Dinner Presentation	Fee:	\$ 30.00 Member \$ 35.00 Guest \$ 15.00 Student
Location:	WESTBURY MANOR (516) 333-7117 Jericho Tpke (South Side), 3/10 of mile east from Glen Cove Rd., Nassau County, NY. Please Contact Craig Marshall at cmarshall@accuspecinc.com for directions. - Reservations requested but not required. Business attire suggested		
Presentation:	This month presentation will cover the hospital and health care facility requirements to comply with USP Chapter 797 for the prevention of occupational exposure to Antineoplastic and other hazardous drugs. In addition Jim will discuss how to determine the appropriate primary and secondary engineering control for different applications regarding sterile compounding for USP and Hazardous drug for NIOSH. The USP Chapter 797 is now enforced by JCAHO. The presentation should be attended by anyone involved with Hospital or Health Care facility design, construction, operational and/or maintenance. Do not miss this excellent speaker presenting a very timely topic.		
About our Speaker:	James T. Wagner of Controlled Environment Consulting has over 25 years experience assuring the performance of Critical environments. As President of Micro-Clean, Inc. Jim was responsible for building the most respected performance evaluation firm in the United States. During his tenure at Micro-Clean (1979 to 2004) Jim developed an acute understanding of the compliance and maintenance issues involved with Controlled Environments. Jim was the primary instructor to both the Center for Drug Evaluation and Research (CDER) and the Center for Biologic Evaluation and Research (CBER) of the Food and Drug Administration (FDA) to develop a consistent understanding of Clean room issues.		

**Attendees
will earn
1.5 PDH!**

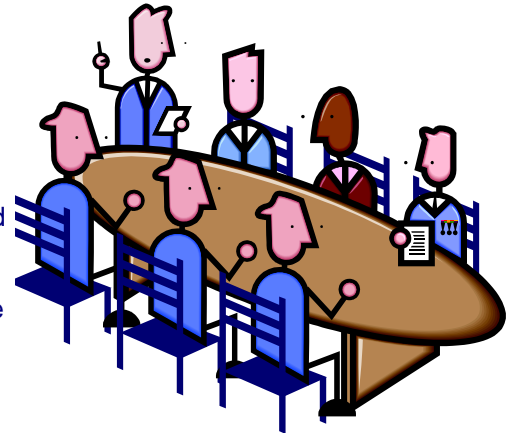
Join us to celebrate the 47th-Year anniversary of the Long Island Chapter...

CHAPTER MAY NOT ACT FOR SOCIETY
An International Organization

Board of Governor's Meeting Minutes

Meeting of the Board of Governors was held on 5/10/05 at the Westbury Manor. Present at the meeting were: Claudio Darras, Rich Gerbe, Peter Gerazounis, Steve Giammona, John Nally. Meeting called to order by Claudio Darras at 5:11 PM:

General –Claudio Darras discussed the CRC. It will be held in New Jersey in August. Each board member is to summarize a report about his committee and give it to CD. The PAOE points are due by 6/30/05. Updates must be done. The BOG votes were opened and tallied. 92 ballots were opened. 89 ballots carried all Board of governor's unanimously. Also discussed was that the June meeting will be past Presidents night.



Treasury – No report

Programs –Rich Gerbe finalized (CEU) values for the May meetings.

Reception – To issue badges with names, which would indicate that they paid to attend.

Membership- The e-mail list has been reviewed and has been updated by Liset.

Newsletter –No report

Resource Promotion – Peter Gerazounis reviewed the research promotion goals. Money is being sent in.

Student activities- John Nally has received applications for two scholarships. This will be issued in the next meeting.

CTTC –Rich Gerbe finalized the ASHRAE Learning Institute. The date is set for May 20.

Website – No report

Historian – John Nally has done an excellent job. In a recent article John discussed using chill water for MRI machine cooling. This may be picked up as a follow up in ASHRAE Insights.

Meeting adjourned at 6:20 pm.

Steven Giammona, P.E.
Chapter Secretary

General Meeting Minutes

Meeting was called to order at 6:45 by Claudio Darras: Claudio Darras mentioned our upcoming events and introduced our guest speaker.

The meeting adjourned at 9:00 pm.

Steve Giammona
Chapter Secretary



Long Island Chapter - Past Presidents

1958	H. Campbell, Jr. PE	1981	Robert Rose, PE
1959	Clyde Alston, PE	1982	Timothy Murphy, PE
1960	Sidney Walzer, PE	1983	Leon Taub, PE
1961	Sidney Gayle	1984	Raymond Combs
1962	William Kane	1985	Edward W. Hoffmann
1963	Louis Bloom	1986	Jerome T. Norris, PE
1964	Milton Maxwell	1987	Abe Rubenstein, PE
1965	Will Reichenback	1988	Michael O'Rourke
1966	Joseph Minton, PE	1989	Mel Deimel
1967	Irwin Miller	1990	Robert Rabell
1968	Walter Gilroy	1991	Gerald Berman
1969	Charles Henry	1992	Donald Stahl
1970	William Wright	1993	Ronald Kilcarr
1971	Louis Lenz	1994	Jerald Griliches
1972	Ronald Levine	1995	Walter Stark
1973	Henry Schulman	1996	Joe Marino
1974	Myron Goldberg	1997	Norm Maxwell, PE
1975	John N. Haarhaus	1998	Alan Goerke, PE
1976	Richard K. Ennis	1999	Frank Morgigno
1977	Kenneth A. Graff	2000	Michael Gerazounis, PE
1978	Evans Lizardos, PE	2001	Ray Schmitt
1979	Albert Edelstein	2002	Steven M. Stein, PE
1980	Ralph Butler	2003	Andrew Braum, PE



Student Activities

I would like to take this opportunity to thank those individuals and companies that are participating with student internships. This is a great way to teach our trade to the students and you get some energetic workers in return. A special thanks to Evans Lizardos and Rich Gerbe from Lizardos Engineering for their special interaction with the students from Hofstra University. It's never too late to get involved so if you or your organization would like to participate in an internship please contact us.

We have received some applications in response to our student scholarship offer and they are currently under review by our board. We are planning to award several scholarships this year thanks to the support of our chapter members and the fund raising success of our annual golf outing. We will select the winners shortly and hope to have them present at our next dinner meeting.

As we approach our summer break I would like to thank all those who helped with the various functions and student activities this year. However I must say we fell short of our overall goals. The bottom line is we need more help and participation from our chapter members so we can reach out and make these functions and programs possible. So while your soaking up some rays this summer, give some thought to volunteering for one of our committees. It's a great opportunity for all.

John Nally
Student Activities Committee

RUNNING PAOE POINTS FOR 2004/2005

Chapter Members	Membership Promotion	Student Activities	Resource Promotion	History	Chapter Operations	CTTC	Chapter PAOE Totals
353	250	390	214	275	405	600	2134

History - "Past CRC Thoughts"

Our board is busy planning for the summer CRC meeting and the event is usually quite interesting. Check out this guy.

The speaker at the podium was a masterful orator and his presence captivated the room. He looked around at the audience and began "Weathermen, I salute you. I envy you because you defy the elements, stretch the seasons and warm, cool and ventilate the ambience. We park boys have had to be content with only four or five months of usefulness and now cherish the hope that it may be stretched to six or even seven. You are the potential makers of a new climate to rival what Florida has to offer to retirees on moderate income, not beautiful people at the villa estates, condominiums, country club and pueblo communities described in the real estate ads."

His speech continued and he spoke of the development of the north shore of Long Island, acquiring land and the construction of parkways and parks. "We had a hell of a time getting Caumsett, the Field Estate at Lloyd's Neck. I discussed a gift with Marshall Field for years. When we finally got the place, local opponents and environmental fanatics sought to prevent access by all but confirmed environmentalists and ekisticians. Fortunately we were able when they were not looking to acquire an adequate right-of-way but the road has not thus far been built. So for a while we have what in effect is a private public park." He continued on speaking of the construction of bridges and tunnels and of transportation via rail, road and water ferries. He spoke of industrialized economy, environmental and ecological issues and the planning and engineering of cities, suburbs and metropolises. At one point he even spoke of space. "What can be said about the recent gathering of scientists, technicians and bureaucrats at Princeton and one under way at Stanford University to discuss the transfer of millions of the world's inhabitants to artificial islands in space where the gravity of the earth and moon balance in eternal sunshine, to condominiums ingeniously designed for our surplus inhabitants?"

His speech was winding down and he spoke of Guy Lombardo and his unforgettable tunes. He closed with "Goodnight. I hope I have not outstayed my welcome and am still persona grata with those I regard as partners in the industry and the preservation of the countryside." It was Saturday evening September 20th, 1975 in the Harrison House at Glen Cove. The guest speaker was Mr. Robert Moses, speaking at the ASHRAE Region 1 CRC dinner hosted by the Long Island Chapter.

Become a part of history. Attend this years Region 1 CRC meeting.

John Nally
Chapter Historian

ASHRAE Technology Transfer Library

The ASHRAE Technology Library is now available to all ASHRAE Long Island Members.

Now all members have local access to ASHRAE publications:

- **Handbooks**
- **Standards**
- **Technical Papers**
- **Software**
- **Guidelines**
- **Information on ASHRAE**
- **Bookstore Order Forms**

To borrow see our monthly display or contact:

Rich Gerbe at Lizardos Engineering

Tel: 516-484-1020

Email: reg@leapc.com

Contributions to the library are welcomed.

Resource Promotion Chart

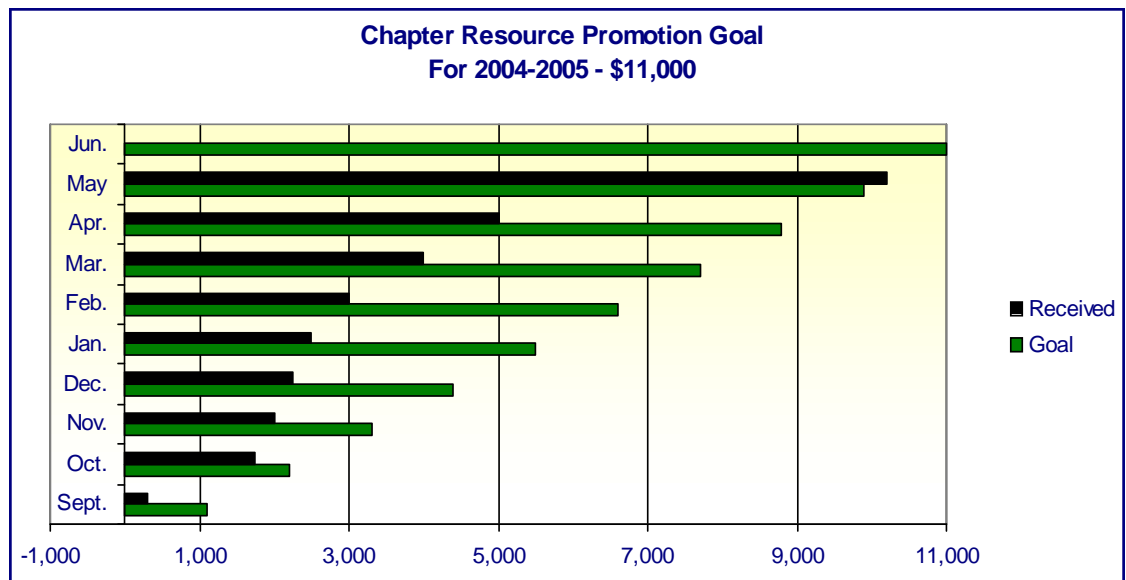
On behalf of the Long Island Chapter I would like to thank the individuals and companies who have contributed to Resource Promotion during the 2004-05 chapter year. June's meeting will be our Spring Resource Promotion Night where I would like to personally thank this year's donors (listed below) and make one last push for the end of the year:

Accuspec	Harold Smith
Adrian Bogart	Howard Weitzman
Andrew Braum	Jerome Norris
Anron	John Fanneron
Arthur Huebner	John Nally
Applied Technologies of NY, Inc.	Joseph Marino
Bladykas Engineering	Michael Gerazounis
Christopher Schwarz	Michael O'Rourke
Claudio Darras	MWSK Equipment
Concessi Engineering	Peter Gerazounis
Control Solutions Group	Raymond Schmitt
Craig Marshall	Richard Gerbe
Dave Fruetel	Robert Leventhal
Emtec Consultants	Robert W Kane Incorporated
Fleet	Ronald Kilcarr
Frank Morgigno	SMACNA
Fred Weber	SRS Enterprises
Gil Bar	Steven Friedman
Grand Central Air Conditioning	Steven Giammona

Thanks to your support we have raised approximately **\$10,200** towards ASHRAE Resource Promotion. This amount includes \$1,500 raised thru our 50/50 raffles. We are also expecting a few more donations which should help us exceed the \$11,000 needed to reach this year's goal.

We really appreciate your continued support. It has been my pleasure to serve as this year's Resource Promotion Chairman.

Peter Gerazounis, P.E.
Resource Promotion Chair



Craig Marshall, P.E. - 2005-06 President of the ASHRAE LI Chapter - Bio

Craig has a BS in Mechanical Engineering from SUNY Buffalo. He is a licensed Professional Engineer in the State of Connecticut.

Craig is Vice President of Accuspec Inc., CT, company with which he has been associated for 9 years. In his work he interface with consulting engineers and owners, providing assistance in design, installation, and commissioning of lab air flow control and desiccant dehumidification systems.

Craig's background also includes 4 years of experience with Monsen Engineering Co., a nationally recognized design/build engineering & construction firm.

Among his responsibilities there were to develop and secure engineering and construction projects for pharmaceutical, chemical, and data center industries.

Craig has actively participated in the Long Island Chapter since 1992. Craig was responsible for spearheading the relocation of our monthly meetings to the Westbury Manor and to lead the Golf Outing organization for the past two years.

He has served as a Chapter Officer and as a member of the Board of Governors for many years. During the past six years he has held the position of Chairperson in numerous committees, including Student Activities, and Resource Promotion.



ASHRAE

LONG ISLAND CHAPTER

CLASSIFIEDS

**As a Courtesy to all Long Island Chapter Members,
All Classifieds Ads Submitted to the Newsletter will be Free of Charge.**

If you would like to place an ad advertising job opportunities or if you would like to advertise that you are looking for employment please contact our chapter's Treasurer, Mr. Steve Friedman via email at sfriedman@mgjassociates.com or at 212-643-9055 for further details.

A multi-disciplinary engineering/architecture firm located on Long Island, is looking for a Mechanical Engineer. This position will include a focus on the design of HVAC, plumbing and fire suppression systems for small and large projects including industrial buildings, schools, firehouses and commercial buildings.

Please contact Eric Franz, Resource Options, Inc., at 781-455-7430 or efranz@resourceoptions.com

ADVERTISEMENTS



DOUGLAS G. VALERIO

MASON EAST, Inc.

Manufacturer's Representatives for
Mason Industries, Inc.
The Metreflex Company • Weiss Instruments, Inc.

631/254-2240 307 B Suburban Avenue
Fax 631/254-2199 Deer Park, NY 11729
215/633-8355 Two Neshaminy Interplex, Ste 205
Fax 215/633-8356 Trevoze, PA 19053



STEVE BERGMAN

TWINCO SUPPLY CORP.

TEMPERATURE CONTROLS
MOTOR STARTERS
PANEL DESIGN & FABRICATION
HVAC SUPPLIES

55 CRAVEN STREET HUNTINGTON STATION, NEW YORK 11748-2143
(631) 547-1100 NYS (800) 794-3188 FAX (800) 926-TWIN
www.twincosupply.com

RICK GASKA
152 41st Street
Brooklyn, NY 11232
718-832-7900
Fax: 718-965-9675

GILMOUR SUPPLY CO., INC.
An Affiliate of DAVIDSON PIPE SUPPLY CO., INC.

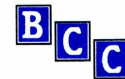
180 Marine Street
Farmingdale, NY 11735
516-694-2800
Fax: 516-694-7740



• HEATING & AIR CONDITIONING
• SHEET METAL • SERVICE

440 WYANDANCH AVENUE, N. BABYLON, N.Y. 11704-1590
(631) 643-3433 Ext. 310 FAX (631) 491-6983

**PLACE
YOUR
AD**



**BEST
CLIMATE CONTROL CORP.**
75 ORVILLE DRIVE
BOHEMIA, NY 11716

TEL (631) 218-8022
FAX (631) 218-8023

AIR CONDITIONING
SYSTEMS

MICHAEL O'ROURKE



JAMES CASE

GIL-BAR INDUSTRIES

(718) 965-6600
FAX (718) 965-6634

141 FORTY-SEVENTH STREET
BROOKLYN, NY 11232

Frank D. Morgigno - CEO/COO fm@atofny.com

415 Oser Avenue • Hauppauge, NY 11788
Tel: 631-331-0215 • Fax: 631-928-4625
www.atofny.com

BUSH WHOLESALERS

MANUFACTURERS REPRESENTATIVE & DISTRIBUTOR

**Air Diffusion Products
Fire & Smoke Control Devices
Variable Volume Terminal Units
Louvers & Dampers**

PHONE 718.624.5900 FAX 718.624.2505

Harold C. Smith, Jr., P.E.
Consulting Mechanical Engineer



hsmith@keysponservices.com

KeySpan Engineering Associates, Inc.
1025 Old Country Road, Suite 420
Westbury, NY 11590
Tel: 516 512-7302
Fax 516 512-7320

Wallace Eannace Associates, Inc.
www.wallaceeannace.com

Manufacturers Representatives
50 Newtown Road
Plainville, New York 11803
516-454-9300
Fax: 516-454-9307
Cell Phone: 516-429-7185
Home/Fax: 631-277-4737
e-mail: jthuman@wallaceeannace.com

Joseph A. Thuman
Special Projects-Engineered Products



**PLACE
YOUR
AD**

ADVERTISEMENTS



John Knowles Ray Schmitt
David Van Wicler



2910 Express Drive South
Islandia, New York 11749
(631) 585-6800 (718) 895-0410
(212) 912-1902
Commercial FAX: (631) 471-4950

Visit our website: www.walesdarby.com
e-mail us at: info@walesdarby.com



Eric M. Berkowitz
Managing Partner

989 Avenue of the Americas, New York, N.Y. 10018
Tel: 212-947-4000 Fax: 947-5003 e-mail: emberkowitz@mcquayny.com



631-491-1300
FAX 631-491-8551

Ultimate Power Inc.
INDUSTRIAL BURNERS • BOILERS
GAS • OIL • BURNER SERVICE • A/C & INSTALLATION
ELECTRONIC CONTROLS
ENERGY CONSERVATION SYSTEMS
MECHANICAL CONTRACTORS FOR OVER 33 YEARS

45 NANCY STREET
RONALD MILANO WEST BABYLON, NY 11704-1498
EMAIL: RMLANO@ULTIMATE-POWER.COM

**PLACE
YOUR
AD**

FRIGIDYNE
Air Conditioning Co., Inc.

www.frigidyne.com

AIR CONDITIONING, HEATING
DUST, FUME, AND MIST COLLECTION
TEMPERATURE AND LIGHTING CONTROL

ANDREW S. BRAUM, P.E.
asb@frigidyne.com

(516) 785-9000
FAX: (516) 785-9148
1924 BELLMORE AVE.
BELLMORE, NY 11710

BERNE & BOB LEVENTHAL, INC.
BOB LEVENTHAL

GOVERNOR CORP. KING CO.
ABB - VFD'S CLIMATE CRAFT
CHICAGO BLOWER COIL MASTER

Two Terry Lane PH 516 826-5270
Wantagh, NY 11793 FX 516 826-5277

**chimney
DESIGN
solutions**

VOICE: 212-685-7077 FAX: 212-685-4777
chimneydesignsolutions.com



288 Middle Island Road, Medford, NY 11763



Walter Stark
President

Nautica Dehumidifiers, Inc.
200-19 East Second Street, Huntington Station, NY 11746
Phone: (631) 424-8330 • fax: (631) 251-4241
www.nautica-dehumid.com • www.nautica-dehumid.com

SIEMENS

Siemens Building Technologies, Inc.
Landis Division

50 Orville Drive
Bohemia, NY 11716

Mel Deimel
Sr. Sales Engineer

Tel: (516) 218-1000
Fax: (516) 218-1009
melvin.deimel@us.landisstaefa.com

**PLACE
YOUR
AD**

e-mail: pschiavone@savmor.net
www.savmormechanical.com

TEL: (531) 467-8585x125
FAX: (531) 467-8884



SALES • SERVICE • CONTRACTS

Energy Management Specialists

GANDOLFO J. SCHIAVONE 30 B HOWARD PLACE
VICE PRESIDENT RONKONKOMA, NY 11779



PENN VENTILATION

BARRY BLOWER

NAILOR INDUSTRIES

(Tel) 718.624.5900

(Fax) 718.624.2505



Established 1959

County Fair Air Conditioning Corporation

233 GRAND BLVD • WESTBURY, NY 11590-3599
(516) 997-5656 • (718) 347-7808 • FAX (516) 997-5741
choigerson@countyfair.com • mathan@countyfair.com

CARL HOLGERSON **RONALD J. NATHAN**
Owner Owner

MECHANICAL CONTRACTORS • SALES • SERVICE • ENGINEERING

***If you would like to place an advertisement in The Long Island Sounder
please contact our Chapter Treasurer, Mr. Steve Friedman
@ (212) 253-7303 for further details. Thank you.***