



American Society of Heating, Refrigerating and Air Conditioning Engineers, Inc.

Inside this issue:

President's Message	1
Meeting Information	1
LI Chapter Officers	2
LI Past Presidents	3
PAOE	3
Meeting Schedule	4
May Program	5
Research Promotion	6,7
CTTC	8,9
Student Activities	9
YEA	10
1st Annual Clam Bake	11
Fellowship Memo	12
HVAC Design	
Workshops	13,14
Advertisements	15,16

President's Message

Greetings to all, and I hope you have been enjoying spring so far! In an effort to get ready for our upcoming Golf outing, I have been caught out with some fellow members at the local driving range. With all this extra practice you better look out, as I'm sure to be a true competitor this year, HAHA!



In all seriousness, the golf outing on May 7th is completely booked and is shaping up to be another great event. I do look forward to seeing you all there, and having some laughs together. With the outing on the first Monday of the month, just a reminder that our regular meeting will be held on the third Tuesday of the month, the 15th. We will have 2 speakers for this meeting, both witty and intelligent men in our industry, so this is a meeting you will not want to miss. Steve Friedman, P.E., past president from our own chapter, and Mark Cambria, P.E., past president from the Northeast Chapter have put together a presentation that will earn each person who attends 2 PDH credits! I would like to thank these guys and members of the board who made this happen, your efforts are greatly appreciated.

Last month we visited the NSLIJ Katz Women's Center for our field trip, and it was quite interesting to see all the work that went into its design. All of the preparation that went into making this become a LEED platinum building definitely paid off. Thank you to all the presenters at the facility and Lizardos engineering, who gave us some insight into what things they encountered while engineering this type of project.

CHAPTER MONTHLY MEETING

DATE:	Tuesday, May 15, 2012 Special Date-3rd Tuesday
TIME:	6:00 PM - Cocktails/Dinner 6:45 PM - Dinner Presentations 8:45 PM - Conclusion
LOCATION:	Westbury Manor South Side of Jericho Tpke. 25 Westbury, NY 11590
FEES:	
Members -	\$40.00
Guest -	\$45.00
Student -	\$15.00

Reservations requested, but not required.

Call (516) 333-7117

By now the entire membership should have received their ballots for next year's officers, don't forget to mail them back if you have not already, so we can tally the votes! By now Brian Simkins has gone through his President Elect training, and is already working on his plan for the upcoming year. Last month Charlie Lesniak also attended a YEA leadership program out in San Diego, which you can read about in the YEA segment of the newsletter. It looks as though he learned a lot from this program and hopefully will be able to pass on a few pointers to the rest of the team!

I am happy to announce that with the hard work of the board members we are planning our first annual Clam Bake this summer! This event is a special one because it is in honor of Mr. Evans Lizardos, and his 50 years of commitment to ASHRAE. Please fill out the form and send back to Charlie Lesniak to reserve your spot, and contact Andy Manos for sponsorship opportunities.

I look forward to seeing many of you twice this month, at the Golf Outing and our regularly scheduled monthly dinner presentation.....

Carolyn Arote,
President - Long Island Chapter

Long Island Chapter Officers & Committees

ASHRAE 2011/2012 OFFICERS

POSITION	NAME	PHONE	FAX	EMAIL
President	Carolyn Arote	516.568.6550	516.568.6575	carote@adehvac.com
President-Elect	Brian Simkins, LEED AP	203.261.8100	203.261.1981	bsimkins@accuspecinc.com
Vice President	Andrew Manos, LEED AP	631.632.2791	631.632.1473	andym22@optonline.net
Financial Secretary	Richard Rosner, P.E.	631.737.9170	631.737.9171	rosner@csflc.com
Treasurer	Thomas Fields, P.E., LEED AP	212.643.9055	212.643.0503	thomas.fields@mgepc.net
Secretary	Charles Lesniak, P.E.	516.484.1020	516.484.0926	charles.lesniak@leapc.com
Board of Governors	Don Kane, P.E.	631.737.9170	631.737.9171	dkane@csflc.com
Board of Governors	Andrew B. Dubel, P.E.	212.967.7651	212.967.7654	andrew.dubel@leapc.com
Board of Governors	Nancy Román	516.568.6509	516.568.6586	nroman@adehvac.com

ASHRAE 2011/2012 COMMITTEES

COMMITTEE	NAME	PHONE	FAX	EMAIL
Programs & Special Events	Brian Simkins, LEED AP	203.261.8100	203.261.1981	bsimkins@accuspecinc.com
Membership	Charles Lesniak, P.E.	516.484.1020	516.484.0926	charles.lesniak@leapc.com
Chapter Technology Transfer (CTTC)	Don Kane, P.E.	631.737.9170	631.737.9171	dkane@csflc.com
Newsletter Editor	Liset Cordero	212.643.9055	212.643.0503	liset.cordero@mgepc.net
Research Promotion	Andrew Manos, LEED AP	631.632.2791	631.632.1473	andym22@optonline.net
Historian	Richard Rosner, P.E.	631.737.9170	631.737.9171	rosner@csflc.com
Student Activities	Andrew B. Dubel, P.E.	212.967.7651	212.967.7654	andrew.dubel@leapc.com
Young Engineers in Training	Charles Lesniak, P.E.	516.484.1020	516.484.0926	charles.lesniak@leapc.com
Webmaster	Thomas Fields, P.E., LEED AP	212.643.9055	212.643.0503	thomas.fields@mgepc.net
Nominating	Michael Gerazounis, P.E., LEED AP	212.643.9055	212.643.0503	michael.gerazounis@mgepc.net
Reception & Attendance	Rich Halley	718.269.3809	718.269.3725	rhalley@trane.com
PR & Engineering Joint Council of LI	Peter Gerazounis, P.E., LEED AP	212.643.9055	212.643.0503	peter.gerazounis@mgepc.net
Golf Outing	Peter Gerazounis, P.E., LEED AP Steven Friedman, P.E., HFDP, LEED AP	212.643.9055 212.354.5656	212.643.0503 212.354.5668	peter.gerazounis@mgepc.net sfriedman@akfgroup.com

Editor's Note: The appearance of any technical data, editorial material, or advertisement in this set of publications does not constitute endorsement, warranty or guaranty by ASHRAE of any product, service, procedure, design, or the like. ASHRAE does not warrant that information is free from errors, and ASHRAE does not necessarily agree with any statement or opinion in this set of publications. The entire risk of the use of any information in this set of publications is assumed by the user. Statements made in this publication are not expressions of the Society or of the Chapter and may not be reproduced without special permission.



Long Island Chapter - Past Presidents

1958	H. Campbell, Jr. PE	1985	Edward W. Hoffmann
1959	Clyde Alston, PE	1986	Jerome T. Norris, PE
1960	Sidney Walzer, PE	1987	Abe Rubenstein, PE
1961	Sidney Gayle	1988	Michael O'Rourke
1962	William Kane	1989	Mel Deimel
1963	Louis Bloom	1990	Robert Rabell
1964	Milton Maxwell	1991	Gerald Berman
1965	Will Reichenback	1992	Donald Stahl
1966	Joseph Minton, PE	1993	Ronald Kilcarr
1967	Irwin Miller	1994	Jerald Griliches
1968	Walter Gilroy	1995	Walter Stark
1969	Charles Henry	1996	Joe Marino
1970	William Wright	1997	Norm Maxwell, PE
1971	Louis Lenz	1998	Alan Goerke, PE
1972	Ronald Levine	1999	Frank Morgigno
1973	Henry Schulman	2000	Michael Gerazounis, PE, LEED AP
1974	Myron Goldberg	2001	Ray Schmitt
1975	John N. Haarhaus	2002	Steven M. Stein, PE
1976	Richard K. Ennis	2003	Andrew Braum, PE
1977	Kenneth A. Graff	2004	Claudio Darras, P.E.
1978	Evans Lizardos, PE, LEED AP	2005	Craig D. Marshall, P.E.
1979	Albert Edelstein	2006	John Nally
1980	Ralph Butler	2007	Peter Gerazounis, PE, LEED AP
1981	Robert Rose, PE	2008	Steven Friedman, PE, HFDP, LEED AP
1982	Timothy Murphy, PE	2009	Steven Giammona, P.E., LEED AP
1983	Leon Taub, PE	2010	Nancy Román
1984	Raymond Combs		

PAOE POINTS FOR 2011/2012

Chapter Members	Membership Promotion	Student Activities	Research Promotion	History	Chapter Operations	CTTC	Chapter PAOE Totals
299	650	645	1,330	250	845	975	4,695

Chapter Monthly Meeting - Program for 2011/2012

September 13, 2011 * At Westbury Manor  Dinner Presentation – Cooling Tower Water Treatment Through Non Chemical Technologies Presenter Leon Shapiro **1 PDH**	February 2012  NATIONAL ENGINEERS WEEK Feb 19 through Feb 25
October 11, 2010 * At Westbury Manor  Dinner Presentation – Application of Mixed or Hybrid Boiler Systems for Energy Efficiency Presenter Tom Neill **1 PDH** Resource Promotion Night Back to Basic Session I **1 PDH**	March 13, 2011 * At Westbury Manor  Dinner Presentation--“ Integration & Standard Protocols Update ” Presenter: Lawrence Uebele, PE, LEED AP **1 PDH** YEA Night Back to Basic Session III **1 PDH**
November 15, 2011 * At Westbury Manor  Dinner Presentation – NEW 2012 editions of the ICC Family of Codes and the impacts these have on future building design/build/maintenance market. Presenter: Eli Howard **1 PDH** JOINT MEETING WITH SMACNA Student Activities Night, Membership Promotion, & YEA Night * <u>Meeting will be held on 3rd Tuesday of the month.</u>	April 10, 2012  ANNUAL FIELD TRIP North Shore University Hospital LEED Platinum Katz Women’s Hospital 300 Community Drive Manhasset, NY Presenter: Neil Rosen AIA, LEED AP Dinner to follow
December 13, 2011  Holiday Party - Westbury Manor	May 7th, 2012 * Cherry Valley Club, Garden City, NY ANNUAL GOLF OUTING
January 10, 2012 * At Westbury Manor  Dinner Presentation – Primary/Secondary Vs VPF Presenter: Roy S. Hubbard, Jr. **1 PDH** Back to Basic Session II **1 PDH**	May 15th, 2012 * At Westbury Manor Dinner Presentation #1- Refrigeration The Now & Future Presenter: Steven Friedman, PE **1 PDH** Presentation #2- Engineering Challenges and Sustainable and Solutions in Supermarkets – A Case Study Presenter: Mark Cambria, PE * *1 PDH** Student Activities Night / Refrigeration Night * <u>Meeting will be held on 3rd Tuesday of the month.</u>
January 2012  ASHRAE Winter Meeting Jan 21-25 Convention Center, Chicago	June 12, 2011 * At Westbury Manor PAST PRESIDENTS & OFFICER INSTALLATION
February 21, 2012 * At Westbury Manor  Dinner Presentation- This month’s presentation will discuss the proposed changes to LEED BD+C for 2012 as it relates to the design engineer. There have been some significant changes out for public comment which will affect designers. A panel of LEED experts will discuss the most relevant changes. Moderator: Rudy Holesek Panelists: Paul M. Meyer, Eric Schlameuss, Eileen Sullivan and Neil Rosen ** Meeting will be held on 3rd Tuesday of the month. JOINT MEETING WITH USGBC **1 AIA** Resource Promotion Night / Membership Promotion Night	

August 23-25, 2012

Chapter Regional Conference Region I - Boston, MA

May Program



Dinner Presentations

Presentation No. 1

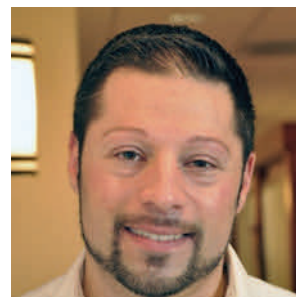
“ASH’R’AE Refrigeration The Now & Future”

By Steven Friedman, PE, HFDP, LEED AP BD+C

Presentation No. 2

***“Engineering Challenges & Sustainable Solutions
in Supermarkets – A Case Study”***

By Mark Cambria, PE, LEED AP, CCP



**Attendees
Will Earn
2 PDH's!**

DATE:	TUESDAY, MAY 15, 2012 (3rd Tuesday of the Month)		
Time:	6:00 PM - Cocktails and Hors D'oeuvres 6:45 PM - Dinner Presentations 8:45 PM - Conclusion	Fee:	\$ 40.00 Member \$ 45.00 Guest \$ 15.00 Student
Location:	WESTBURY MANOR (516) 333-7117 Jericho Tpke (South Side), 3/10 of mile east from Glen Cove Rd., Nassau County, NY. Directions are posted at @ www.ashraeli.org.		
Presentations:	<p>Presentation #1 - Steve's presentation focuses on refrigerants as it relates to sustainable design (LEED) , high performance buildings (ASHRAE Std 189.1), energy efficiency (ASHRAE Std 90.1), refrigerant types, characteristics, usage and application. Within the presentation, he will discuss alternate ozone friendly refrigerant selections and provide evidence based case studies of installed systems.</p> <p>Presentation #2 - Mark will be speaking about Engineering Challenges and Sustainable in Supermarkets. He will be reviewing challenges in achieving LEED, LEED Design Features, Optimizing Energy Performance, Mechanical/Electrical System integration and keys to project success.</p>		
About our Speakers:	<p>Steven Friedman, PE, HFDP, LEED AP BD+C brings over 23 years of engineering design and construction experience specializing in healthcare facilities industry. Mr. Friedman was the first New York State engineer certified as a Healthcare Facility Design Professional, recognized by ASHRAE. Mr. Friedman received a Bachelor's degree in Mechanical Engineering in 1988 from SUNY College of Technology in Farmingdale, NY. Steve served on the Board of Governors for the LI Chapter of ASHRAE since 2000, finishing his active duty as President in 2008-2009. Opting to further his leadership role, he was appointed to ASHRAE's Regional level as Refrigeration Chair and Society level Refrigeration Committee where he will be involved in new refrigeration technologies, and will be a contributing member for edification of the ASHRAE Refrigeration Handbook for 2014,</p> <p>Mark Cambria, PE, LEED AP, CCP graduated from Stevens Institute of Technology (Hoboken, NJ) with a Bachelor of Engineering degree in mechanical engineering, and started in the engineering consulting industry for AKF Engineers, NYC in 1998. In 2005 he moved from Staten Island to up-state NY where he continued in the consulting engineering field, shifting his career focus to building commissioning and controls design. In 2010, Mark served as the ASHRAE Northeast Chapter president, and continues to remain active in on the Regional level as incoming Regional Vice Chairman of the Refrigeration Committee for ASHRAE Region I. Having well over 1 million square feet of commissioning experience, he is a Certified Commissioning Professional by the Building Commissioning Association. Mark is currently the HVAC Group Manager for M/E Engineering's Schenectady, NY</p>		

Research Promotion

I would like to thank all the companies who have participated in the annual 2012 Product Directory of Manufacturers and their Representatives.

The Product Directory has been prepared as a service to all its members and as a service to the local HVAC industry. It will be made available to all ASHRAE and non-ASHRAE members at no-cost and can be obtained from our monthly meetings or directly from our web-site.

The Directory is intended to provide better communications between manufacturers and their sales representatives; engineers who specify products; contractors who purchase and install the equipment; and other interested parties. Product Directory listings are not limited to ASHRAE members and the listings are not to be considered as advertising or endorsement by ASHRAE of any product, manufacturer or representative.

This year's overall resource promotion goal is \$2,001,900 with over 75 research projects on board. Our chapter is expected to raise approximately \$13,881 towards the overall goal of which we have already raised \$13,827. I am hoping I can count on the continued support of all of our past contributors who have generously supported us over the years.

I also look forward to gaining the support of new contributors this coming year. Please help support ASHRAE in any way you can.

I would like say 'thank you' to all the contributors listed below whom have already donated to ASHRAE this year:

INDIVIDUALS

Ms Carolyn Arote
 Mr Andrew B Dubel
 Mr Thomas Fields, PE, LEED AP
 Mr Steven D Friedman, PE, HFDP, LEED AP
 Mr Richard Gerber
 Mr Carl E Graber, PE
 Mr. Don Kane, PE
 Mr David Robert Jendras
 Mr Donald Kane, PE
 Mr Ronald J Kilcarr, PE
 Mr Charles J. Lesniak, PE
 Mr Andrew E Manos, LEED AP
 Mr Frank D Morgigno
 Mr. John D Nally
 Mr. Jerome T Norris
 Mr Michael O'Rourke
 Mr Richard Pearson, PE, LEED AP
 Ms Nancy Roman
 Mr Richard L Rosner, PE
 Mr Anthony J Rosasco, Sr
 Mr Raymond Schmitt
 Mr Jerome A Silecchia
 Mr Brian C Simkins, LEED AP
 Mr James R Tauby, PE

COMPANIES

8760 Inc.
 Accuspec Inc.
 A D E Systems Inc
 Albert Weiss Air Conditioning
 Products
 Alnik Mechanical Corp
 Applied Technologies of NY Inc
 ASHRAE Charleston Chapter
 Berne & Bob Leventhal Inc
 Bladykas Engineering P C
 Building Cooling Systems
 Captive Aire
 Carrier
 Catan Equipment Sales
 Chimney Design Solutions
 Clean Air Company
 County Fair Air Conditioning Corp
 Daikin US Corp.
 EMTEC Consultants Professional
 Eng
 Environmental Air Quality
 Gil-bar Industries
 J-Mar Controls
 KLIMA NY
 Liebert-Emerson Network Power
 Lizardos Engineering Associates
 PC
 LPI Controls Inc
 Mason East Inc.
 Metro Air Products
 MV Controls Inc
 PEPCO
 Platsky Company
 PVI Industries
 Rathe Associates
 Siemens Building Technologies Inc
 SRS Enterprises
 Technical Air Systems
 Venco Sales Inc.
 Wales Darby
 Wallace Eannace Associates, Inc

Research Promotion (Cont'd. from Page 6)

CONTRIBUTIONS CAN BE MADE IN THE FOLLOWING WAYS:

1) You can mail your checks, made out to ASHRAE Research Promotion, to:

Andrew Manos
ASHRAE Research Promotion Chair
c/o Stony Brook University
Campus Planning, Design and Construction
Research and Support Services, Suite 160
Development Drive, Stony Brook, NY 11794-6010

2) You can bring your check to any of the meetings and give it to me. I will mail it into headquarters.

3) You can contribute via paypal from the ASHRAE LONG ISLAND web site just click on the donate button.

4) You can contribute directly on-line. www.ashrae.org

*** Please make sure your credit your contribution to the LONG ISLAND CHAPTER 006 ***

Thank you again for all your support!

Andrew Manos, LEED AP
Research Promotion Chair

Mission: To improve the quality of life and to answer tomorrow's questions through research TODAY.

Over \$2million raised annually to help fund \$10million in research projects and student grant-in-aids.

Research is used to update the Society's standards and guidelines.

Contributions come from more than 6,700 members, non-members, and companies.

100% of all funds raised go directly to research projects that support the HVAC&R industry.

Active research projects are conducted all around the world at various universities and private organizations.

ASHRAE RESEARCH PROMOTION

Important Links:

www.ashrae.org/rp

www.ashrae.org/contribute*

www.ashrae.org/consumer

www.ashrae.org/pressroom

www.ashrae.org/research

*ASHRAE is a qualified 501(c)3 and all contributions are tax deductible.

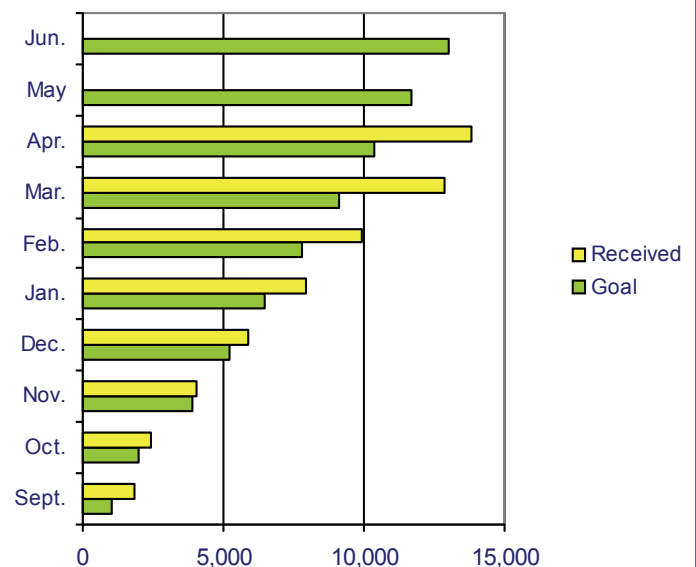
Important Contacts:

Patricia Adelman
RP Manager
(404)636-8400 ext. 1114
PAdelman@ashrae.org

John Rhodes
RP Committee Chair
(972)206-2590
Gopher56@swbell.net

ASHRAE RESEARCH PROMOTION

**Chapter Research Promotion Goal
For 2011-2012 - \$13,881**



CTTC

REFRIGERATION - HOW COOL IS THAT!

There are some who would venture that refrigeration is the "Rodney Dangerfield" of the HVAC/R world. We are constantly bombarded in trade and technical publications about new (and some not-so-new) approaches to creature comfort to reduce energy consumption and "carbon footprint", while simultaneously resulting in equal or improved perceived comfort levels for the inhabitants of residences and places of business. On the other hand, when was the last time you read a study where investigators randomly selected bags of frozen peas from a variety of supermarket display cases and evaluated how many peas per thousand had suffered loss in food value or appearance due to improperly designed, installed or maintained refrigeration systems? We are also exposed to a barrage of programs to install newer, more efficient and "greener" room air conditioners and whole house air conditioners, generally accompanied by generous rebates for those who are willing to reduce their carbon footprint. How much benefit is this type of program in the overall scheme of reducing energy usage and reducing one's carbon-footprint (assuming that one has a carbon-footprint and that it is responsible for evil effects). Is this the best effort that can be made in order to achieve energy and environmental improvement?

Most of us have, at one time or another, knowingly or not, conducted a Pareto analysis to determine how to get more bang for our analytical buck (not withstanding that Vilfredo Pareto was more concerned with land ownership and political systems than analyzing problem/solution scenarios- only when Joseph M. Juran adapted Signore Pareto's comments on land ownership to problem analysis did it enter most of our lexicons). The basic concept of this approach is to find the 20% of causes which are responsible for 80% of the effects. In the case of HVAC/R, the challenge is to find those installations which can be upgraded, modified or replaced to result in most significantly reduced energy consumption/carbon footprint reduction. When concerned only with "comfort cooling", there is more leeway with regard to reduction of services (except for critical applications, such as health care facilities). We can raise cooling thermostat set points, we can inhibit operation of equipment based on time-of-day or electrical demand. What is to be done for refrigeration loads? For the most part, these loads operate 24/7. Whether a food warehouse or a morgue, there is no option for "raising the thermostat". Ice melts above 32 degrees F, and frozen food does not retain full quality above zero degrees F.

Of course, years ago, our refrigeration facilities had, for the most part, a zero carbon footprint. Large chunks of ice (whether cut from lakes in the winter or removed from icebergs towed about the globe) were used, in combination with insulated enclosures to maintain perishable food. What if a mild winter occurred and the lake didn't ice over enough? Prepare for a diet including a lot of beef jerky and baccala.

Mechanical refrigeration was a boon to the food distribution industry. It made it possible to stock a larger variety and quantity of food, without concern about spoilage. Early ammonia refrigeration plants worked well, but were perceived as dangerous, due to the poisonous nature of the ammonia refrigerant, thus began the search for improved refrigerants, without the negative aspects of ammonia. This led to CFC and HFC based refrigerants, which for years were considered benign, environmentally, and functionally effective. These refrigerants did not have the perceived toxicity of ammonia (though, if one were caught in an enclosed space flooded with a CFC or HFC compound, the results could still be fatal, due to asphyxiation, rather than poisoning). Alas, this state of affairs was to become much more dynamic as it seemed that every time a new compound was developed, a new issue was raised. Even CO₂ which had been considered a relatively benign compound, and used for cooling applications dating back over 100 years ago, has now come under fire as a "pollutant". Such a short time ago, the developers of fuel cell technology were always claiming that the only output of certain FC technology was water and CO₂. Today, the EPA would be breathing down their neck. If one were a skeptic, it would be easy to think that some of the regulations enacted were more a function of patent expiration rather than the "greening" of the earth, however, rules are rules and we need to make reasonable decisions as to what systems are to be used, knowing that the rules governing same may change several times over the lifetime of the facility using the systems in question. As designers and installers of refrigerating equipment, we do not want to recommend a technology that will soon become a white-elephant, nor do we want to be the Beta-Tester for the next new(old) technology, especially when it comes to changes in refrigerant and technology. The consequences of the failure of a refrigeration plant can be a major economic loss to the owner. Some of the new refrigerant mixtures include propane or butane constituents. Use of such refrigerants will incur additional coordination with regard to fire protection and suppression, as well as necessitate additional maintenance procedures and concerns.

Some have proposed a water-vapor "refrigerant" based system, however, while technically feasible (and reported to have been successfully implemented in European countries), the need for technically advanced materials for the turbo-compressor due to rotational speed and flow volume required, this generally will not be an economically justifiable option in the near future.

CTTC (Cont'd. from Page 8)

Radically different technology, such as the, so-called, magnetocaloric effect technology (relying on the heating/cooling effect of materials on exposure to magnetic fields) does not appear to be ready for prime time, and, due to the need for solid-polymer materials generally sourced from petroleum stock, may actually increase the net carbon footprint, taking into account the raw materials used as feed stock for the solid-polymer formulation.

So, what are the options available to the conscientious HVAC/R designer? Most of the improvements to be achieved may come from something as simple as reducing the overall cooling budget due to changes not directly connected with the mechanical equipment:

- Proper use and installation of air curtains to retain cooled air.
- In-store de-humidification to reduce latent cooling load. Consider creating conditioned "rooms" used by some retail food stores, where all products requiring refrigeration are in one room, much like a very large walk-in cooler.
- Coordination with other energy user/saver disciplines, such as lighting/daylighting, to reduce cooling load.
- Changes in the type of product, for example, milk which does not require refrigeration until opened.
- Changes in packaging of products, incorporating reflective coverings, to minimize incident heat input

As can be seen, sometimes the most improvement can be achieved without resorting to high-tech, untried technology.

Don Kane, P.E.
CTTC

Student Activities

We would like to congratulate our 2012 student scholarship winners, Gregory Mueller won a \$1000 scholarship and Analiz Valderrama won a \$500 dollar scholarship. Our winners are undergraduates from SUNY Sony Brook and Hofstra respectively. Congratulations and good luck with your engineering studies! We will be awarding both of these scholarships at our next dinner meeting.

The next student activates night will be this month's meeting on May 15th. We encourage undergraduate engineering students to attend this meeting. Students joining us for the first time this year will have a complementary dinner on ASHRAE LI. Steven Friedman will be giving the presentation "Refrigeration The Now and Future". We look forward to seeing you.

Andrew B. Dubel, P.E.
Student Activities Committee Chair

**Donate your old Handbooks**

Please bring your old handbooks to the meetings for donations to our student members who do not have complete sets at this time. Rich Rosner will be collecting them.

Young Engineers in ASHRAE (YEA)

The 2012 Spring Young Engineers in ASHRAE (YEA) Leadership Weekend was held in San Diego this past March; it was an amazing time, and I would recommend any YEA ASHRAE members to attend it if they can. I would also recommend visiting San Diego and the surrounding areas. Young engineers from all around the country and Canada attended this event (a person from Newfoundland had the honor of longest flight). The three day event covered many different areas in workshops from facilitating YEA events to personal branding. I will give a brief overview of the events but I will not describe the details, ideas, and questions the facilitators asked us.

Sometimes in life you go to a place with a closed mind and you are rewarded with an eye opening experience. This is what happened to me at the YEA Leadership weekend. Prior to attending the weekend you were instructed to take a personality test, if you answer this truthfully you were rewarded with a surprise of how accurate it described you; naturally I was a little thrown off by this. The main part of the leadership weekend was facilitated by Ralph Kison. Ralph gradually led the group into thinking differently about who we are, and how we want to project ourselves in the world. We started off the event with ice breakers and a communication exercise showing how things could get lost in transmission. We then started to go over those personality tests. It was interesting to see how our personality diversities leveled out the group but it showed that we would be a fun and outgoing group. Ralph showed us how there are three main types of people and we are all needed to help each other out. We could all be categorized as Initiators, Implementers and Facilitators. He showed us how these are our personalities and we should shouldn't be ashamed of them or change them, that we should embrace them and work with them to make us happier. After this he went over mind mapping for our thoughts and he asked us an interesting question which none of us were prepared for at the time. Our brains short circuited and after our brains rebooted; we then proceeded to talk about this question as a group and in-between tables. We then presented our answers to this question. The amazing thing was how everyone's answer was different. After this exercise we had a quick introduction to branding and then we learned about personal branding. With personal branding we went over who we are, what is our drive, and how we want to project ourselves in the world. We learned the risks of social media, and how to changing our brand just takes time. We then developed a picture of our personal brand which resides on my fridge.

As I stated in the last paragraph I started this leadership weekend with a cynical closed mind, but I was immensely rewarded. This weekend opened my eyes into viewing this industry differently. I learned what type of person I am, how to deal with it, and it made a lot of sense. That personality test was about 80% correct. I learned about personal branding and what it means. I now have a few extra books added to my reading list. And I had a great time with all the engineers who participated in this event and during the after hour events. San Diego is home to amazing beaches, eateries, and microbreweries. There was also a check point for an exotic car rally on our hotel's block. I would only ask for one more thing out of this leadership weekend. It should be extended for an extra day to facilitate a "team building" sightseeing tour of the many things San Diego has to offer.

The running joke of the weekend was why does San Diego need mechanical engineers, the weather is perfect.

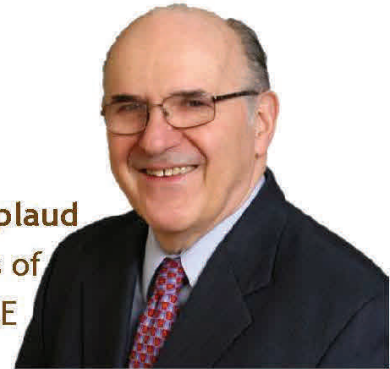
Charlie Lesniak
YEA Chairman

ASHRAE Long Island - First Annual Clam Bake - July 12, 2012



ASHRAE LONG ISLAND FIRST ANNUAL CLAM BAKE

Join your ASHRAE friends to applaud
Evans as he celebrates 50 years of
dedication and support to ASHRAE



Evans Lizardos Celebrates 50 Years of Service



July 12

RAIN or SHINE

6pm to 9pm

Babylon Fish and Clam

458 Fire Island Avenue | Babylon

\$50.00 per person

RSVP by June 30 to

Charlie Lesniak

516.484.1020 x295

Charles.Lesniak@leapc.com

Sponsorship Opportunities available

Contact: Andrew Manos – 631.632.2791

andym22@optonline.net

Name:	Telephone Number:
Company:	Email:
Number of Tickets:	Amount Enclosed:

Please send Payment to: Charlie Lesniak | Lizardos Engineering | 200 Old Country Road – Suite 670 | Mineola NY 11501
Make checks payable to: ASHRAE Long Island

Available Fellowship Positions - Memo from Mark Wills

Attn. ASHRAE Members:

ASHRAE is sponsoring a 12- to 18-month fellowship program with placement at the Department of Energy in the Office of Building Technologies, Building Energy Codes Program in Washington, DC. This fellowship provides the traditional ASHRAE Member with exposure to the area of public policy. This assignment will enable a selected ASHRAE member to assist DOE in one of the following code deployment activities:

- Code Compliance;
- Residential Duct Test Training;
- Assessment of the Impact of Updating State Energy Codes; or
- Advanced Energy Code Training.

Federal government fellowships provide a valuable public service to the nation while, at the same time, providing engineers and scientists with a unique opportunity to participate directly in the policy-making process. This is an exciting, rewarding, and educational period in their professional careers. This enriching experience enables ASHRAE/DOE Fellows to bring back to their employers an insider's perspective on government decision-making that can contribute significantly to the mission and vision of the organization.

If you know of any members in your regions and/or chapters who might be a good fit for this opportunity, please have them contact Doug Read, our Director of Government Affairs, at their earliest convenience.

A few additional points to stress to your members, should they be interested:

- **The fellowship requires living in or around Washington, DC for a period of 12 months, with the possibility of an extension for a second year.**
- **The fellowship will require reporting to DOE offices on a daily basis (i.e., a 40-hour work week).**
- **The individual selected must be a U.S. citizen.**
- **A stipend of \$74,872 gross (i.e., before taxes, etc.) will be provided by DOE.**
- **Health insurance reimbursement will be provided by DOE up to \$500 per month, with any monthly costs over that being paid for by the fellow.**
- **Ideal candidates will have a technical background, with 3-10 years experience in the building industry, as this is an early career development opportunity.**
- **The fellowship can begin as soon as a suitable candidate is selected by DOE.**

Hopefully, this will provide some clarity to those of your colleagues who may be intrigued by the opportunity.

If you or your members want to submit a résumé and a letter of interest for further consideration, please contact/have them contact Doug Read.

Regards,
Mark Wills

ASHRAE HVAC Design Workshops

ASHRAE's HVAC Design Workshops



HVAC Design: Level I—Essentials

ASHRAE created the HVAC Design: Level I — Essentials workshop to provide intensive, practical training for HVAC designers and others involved in the delivery of HVAC services. Developed by industry-leading professionals, this workshop presents fundamental, and technical information related to HVAC design in commercial buildings.

In three days, you will gain practical skills and knowledge in designing, installing and maintaining HVAC systems that can be put to immediate use. The workshop provides real-world examples of HVAC systems, including calculations of heating and cooling loads, ventilation and diffuser selection, using the newly renovated ASHRAE Headquarters building as a living lab. Engineered drawings of the Headquarters renovations will be incorporated to expose you to plan reading and graphical understanding of system design.

Workshop Topics:

- Fundamentals
- Heating/Cooling Load Calculation
- System Selections
- Common System and Components
- Cooling System
- Basic Design of Hydronic Systems
- Basic Design of Air Systems
- BAS Control
- Sustainable Design
- Project Management and Other Skills
- Introduction to Technical Sales

HVAC Design: Level I — Essentials

When: May 21-23, 2012

Where:

ASHRAE Headquarters, Foundation Learning Center, Atlanta, GA

Cost: \$1,239 (ASHRAE Member: \$989)

Who Should Attend:

- Engineers who are new to the HVAC industry
- Facilities managers who work in new construction or major renovation projects
- Technicians who would like to gain design knowledge

Visit www.ashrae.org to Register

ASHRAE HVAC Design Workshops

HVAC Design: Level II—Applications

ASHRAE's HVAC Design: Level II — Applications workshop provides participants with advanced instruction on HVAC system designs for experienced HVAC designers or those who completed the HVAC Design: Level I — Essentials workshop.

Developed by industry-leading professionals, the workshop provides participants with advanced level information about designing, installing and maintaining HVAC systems that can be put to immediate use. Participants will gain an in-depth look into Standards 55, 62.1, 90.1, 189.1 and the Advanced Energy Design Guides, as well as a range of other HVAC topics.

Workshop Topics:

- Sustainability/Green Buildings/LEED®/HPB/NZEB
- Building Systems—Education Facility
- HVAC Systems
- Building Systems—Chiller/Broiler, Air Handlers, VAV Terminals
- Dedicated Outdoor Air Systems
- Building Systems—Multi-story office buildings
- Energy modeling/Life Cycle Cost



HVAC Design: Level II — Applications

When: May 24-25, 2012

Where:

ASHRAE Headquarters, Foundation Learning Center, Atlanta, GA

Cost: \$829 (ASHRAE Member: \$679)

Who Should Attend:

- Engineers who have HVAC design experience
- Participants who attended HVAC Design: Level I — Essentials
- Architects who want an in-depth understanding of HVAC design
- Construction project managers who work with mechanical systems

Your Instructors



Julia Keen, Ph.D, P.E.,
ASHRAE Member, HBDP



Joel Primeau, P.Eng,
ASHRAE Member, HBDP,
LEED AP

Visit www.ashrae.org to Register

ADVERTISEMENTS

**PLACE YOUR
AD HERE**

MATT ROMANELLI
E-MAIL: MROMANELLI@GIL-BAR.COM

GBI GIL-BAR INDUSTRIES

NEW YORK OFFICE
5 WEST 19TH STREET
NEW YORK, NY 10011
TEL: (212) 331-8272
FAX: (212) 331-8273

LONG ISLAND OFFICE
25 NEWBRIDGE ROAD
HICKSVILLE, NY 11801
TEL: (516) 216-4310
FAX: (516) 889-4042



631-491-1300 x16
FAX 631-491-8551

Ultimate Power Inc.

INDUSTRIAL BURNERS • BOILERS
GAS • OIL • BURNER SERVICE • A/C & INSTALLATION
NATIONAL BOARD CERTIFIED "R" STAMP REPAIR CO
DDC CONTROL SYSTEMS
MECHANICAL CONTRACTORS FOR OVER 36 YEARS

RONALD MILANO

45 NANCY STREET
WEST BABYLON, NY 11704-1498

EMAIL: RMILANO@ULTIMATE-POWER.COM

Leonard Van Sicklin
President



Mechanical Services Inc.
• HEATING & AIR CONDITIONING •
• SHEET METAL • SERVICE •

440 Wyandanch Avenue
North Babylon, NY 11704
lv@anronac.com
www.anronac.com

Phone: 631-643-3433
Fax: 631-491-6983
Cell: 631-860-4349

**PLACE YOUR
AD HERE**

Frank D. Morgigno - President/CEO fm@atiofny.com

ATI Applied Technologies Of NY, Inc.
Manufacturers Representatives

90 Plant Ave. • Ste. 110 • Hauppauge, NY 11788
Tel: 631-331-0215 • Fax: 631-928-4625
www.atiofny.com



Kevin Cirincione
President

COUNTY ENERGY CONTROLS, INC.
County Pneumatic Controls, LLC

Energy Management Systems

429 Montauk Hwy - POB 780
East Quogue NY 11942
www.countyenergycontrol.com

p: (631) 653-9124
f: (631) 653-9177
e: kevin@countyenergycontrol.com

BERNE & BOB LEVENTHAL, INC.

Manufacturer's Rep. for Governair Corp.

NEW YORK CITY, LONG ISLAND, & WESTCHESTER

GOVERNAIR CORP.

Roof Top Penthouses to 400,000 CFM

Custom DX Systems to 500 Tons

(Air – Water – Evap Cooled)

Complete engineered systems designed and built for specific
job requirements and complying with the latest NYC Sound code.
Replacements for existing Governair units.

BOB LEVENTHAL

TEL (516) 826-5270

FAX (516) 826-5221

BLEVENTHALHVAC@OPTIMUM.NET

TWO TERRY LANE, WANTAGH, NEW YORK 11793

Right People. Right Results.®

Michael J. Iuzerillo
Senior Manager

Data Center Assessment and Design

Direct: (631) 630-1203
Cell: (631) 291-5490
mizuerillo@customonline.com
www.customonline.com

70 Suffolk Court, Hauppauge, NY 11788

SIEMENS

Industry

Siemens Industry, Inc.
Building Technologies Division

50 Orville Drive
Bohemia, NY 11716
USA

Tel: +1 631 218-1000 Ext. 214
Fax: +1 631 218-1009
Mobile: +1 516 924-2913
vincent.catalano@siemens.com
usa.siemens.com/buildingtechnologies

Vincent Catalano, C.E.M.
Account Manager



**BEST
CLIMATE CONTROL CORP.**
75 ORVILLE DRIVE
BOHEMIA, NY 11716

AIR CONDITIONING
SYSTEMS

TEL (631) 218-8022
FAX (631) 218-8023

MICHAEL O'DRISKE



Established 1958

County Fair Air Conditioning Corporation

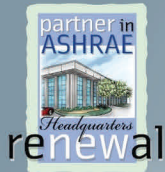
233 GRAND BLVD - WESTBURY, NY 11590-3588
(516) 337-5656 • (718) 347-7808 • FAX (516) 337-5741
choigersen@countyfair.com • mrsathan@countyfair.com

CARL HOLGERSON **RONALD J. NATHAN**
Owner Owner

MECHANICAL CONTRACTORS • SALES • SERVICE • ENGINEERING

ADVERTISEMENTS

EFFICIENCY IS EVERYTHING.



VRV III
THE INTELLIGENT AIR CONDITIONING SYSTEM

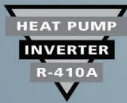


Daikin AC is pleased to announce the **VRV III PB** series.

This new iteration of VRV III is available in sizes ranging from 6 to 30 tons and is rated in accordance with AHRI standard 1230-2010. VRV III PB has been designed and optimized to meet or exceed the latest minimum efficiency requirements in 10 C.F.R. Part 431 as determined by the U.S. Department of Energy (DOE) and efficiencies as defined by ASHRAE 90.1-2010. With this new efficiency data, Daikin positions its VRV system as one of the most efficient heating and air conditioning systems available in the North American market as well as the efficiency leader in the VRF market.

Contact our local Daikin AC sales engineers in New York City.

- Ray Schmitt: 631-335-7116 - ray.schmitt@daikinac.com
- Steve Handelman: 917-968-9332 - steve.handelman@daikinac.com



Try a Better Perspective, try Daikin AC

866-4DAIKIN
www.daikinac.com

DAIKIN AC
absolute comfort



Systems That Power
Energy Solutions



uponor **AC Smith**

VIESMANN HydroTherm®



SPEAKMAN®



Boiler Systems Inc.



FLOW DESIGN INC.



WATER CONTROL

Visit the **Wales-Darby Energy Learning Center** at
2910 Express Drive South
Islandia, New York 11749
631.585.6800 Comm'l FAX: 631.471.4950
e-mail us at infony@walesdarby.com
visit our website at www.walesdarby.com

**PLACE YOUR
AD HERE**

**chimney
DESIGN
solutions**
VOICE: 212-685-7077 FAX: 212-685-4777
chimneydesignsolutions.com

If you would like to place an advertisement in The Long Island Sounder please contact our Chapter Treasurer, Mr. Tom Fields @ 212.643.9055 or via email thomas.fields@mgepc.net for further details.
Thank you.

New Advertising Rates:

Business Card	\$200
Triple Size	\$350
Half Page	\$500
Full Page	\$800