

September 2004

THE LONG ISLAND SOUNDER



ASHRAE Long Island Chapter, Region 1...Founded in 1957

www.ashraeli.org

American Society of Heating, Refrigerating and Air Conditioning Engineers, Inc.

Inside this issue:

President's Message	1,3
Meeting Information	1
LI Chapter Officers & Committees	2
President's Message	3
Meeting Schedule	3
PAOE	3
June Program	4
Ch. Officer Installation	5,8
Student Activities	6
Membership	6
LI Chapter Past Pres.	6
History	7
Ron Spinelli Obituary	7
Ch. Officer Installation	8
Resource Promotion	9
CTTC	9,10
CRC 2004	11-13
Classifieds	14
Advertisements	14,15

President's Message

As the new Chapter president, I want to welcome you to the 2004-05 season of the ASHRAE Long Island Chapter. We hope that you had a pleasant summer.

During the summer, our Chapter hosted a successful 2004 ASHRAE Chapter Regional Conference (CRC), which congregated delegates from all fifteen northeast Chapters in our Region. Our congratulations go to Andrew Braum and to last year's Board members, who received many awards for their exceptional performance. Our sincere thanks and gratitude go to all the members who participated in the 2004 CRC Planning Committee for their outstanding job, in particular to Alan Goerke, P.E. and Frank Morgigno for their great leadership. Special thanks go to the companies that made generous contributions to assure the financial success of this event, whose names are recognized inside.

Craig has been hard at work on this year's program, and a complete year schedule will be available to you shortly. We are happy to continue our joint meetings with SMACNA and with ACCA, and this year we will reach out to other trade and professional organizations represented in Long Island to join us in our activities. In February, we will have the now traditional joint meeting with NYC - Bi-State & NJ Chapters. It will be another first class event, featuring a prominent speaker from ASHRAE. Recognizing that engineering groups need to work together, we will continue our partnership with the Engineering Joint Council of Long Island (EJCLI) and we are committed to active participation in the Engineers Week's activities that culminate in February.

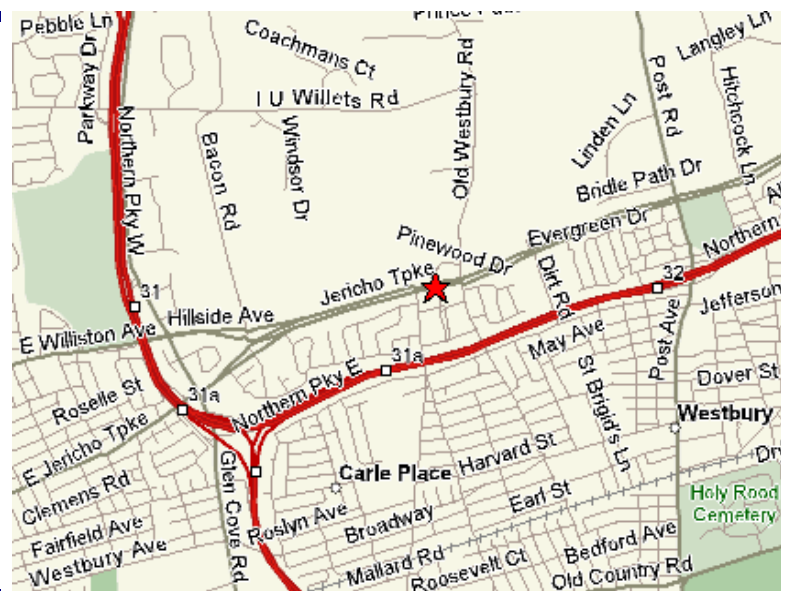


Cont'd. on Page 3

CHAPTER MONTHLY MEETING

DATE:	Tuesday, September 14, 2004
TIME:	6:00 PM - Cocktails/Dinner 6:45 PM - Dinner Presentation 9:00 PM - Conclusion
LOCATION:	Westbury Manor ★ South Side of Jericho Tpke. 25 Westbury, NY 11590 - See Map on Right
FEES:	
Members -	\$30.00
Guest -	\$35.00
Student -	\$15.00

Reservations requested, but not required.
Call (516) 333-7117



Long Island Chapter Officers & Committees

ASHRAE 2004/2005 OFFICERS

POSITION	NAME	PHONE	FAX	E-MAIL
President	Claudio Darras, P.E.	(212) 354-5656	(212) 354-5668	cdarras@akf-eng.com
President-Elect	Craig D. Marshall P.E.	(203) 261-8100	(203) 261-1981	cmarshall@accuspecinc.com
Vice President	John Nally	(631) 331-0215	(631) 928-4625	jn@atiofny.com
Financial Secretary	Peter Gerazounis, P.E.	(212) 643-9055	(212) 643-0503	pgerazounis@mgjassociates.com
Treasurer	Steven Friedman	(212) 643-9055	(212) 643-0503	sfriedman@mgjassociates.com
Secretary	Steven Giammona, P.E.	(631) 592-2678	(631) 630-8883	sgiammona@jameslasala.com
Board of Governors	Richard E. Gerbe	(516) 484-1020	(516) 484-0926	reg@leapc.com
Board of Governors	James Hayes	(201) 247-7286	(718) 228-6721	jhayes@geru-usa.com
Board of Governors	Andrew S. Braum, P.E.	(516) 785-4200	(516) 785-9148	asb@asbengineering.com

ASHRAE 2004/2005 COMMITTEES

COMMITTEE	NAME	PHONE	FAX	E-MAIL
Programs and Special Events	Craig D. Marshall, P.E.	(203) 261-8100	(203) 261-1981	cmarshall@accuspecinc.com
Membership	Steven Giammona, P.E.	(631) 592-2678	(631) 630-8883	sgiammona@jameslasala.com
Chapter Technology Transfer	Richard E. Gerbe	(516) 484-1020	(516) 484-0926	reg@leapc.com
Newsletter Editor	Steven Friedman Liset Pena	(212) 643-9055 (212) 643-9055	(212) 643-0503 (212) 643-0503	sfriedman@mgjassociates.com lpena@mgjassociates.com
Resource Promotion	Peter Gerazounis, P.E.	(212) 643-9055	(212) 643-0503	pgerazounis@mgjassociates.com
Historian	John Nally	(631) 331-0215	(631) 928-4625	jn@atiofny.com
Student Activities	John Nally	(631) 331-0215	(631) 928-4625	jn@atiofny.com
Webmaster	James Hayes	(201) 247-7286		jhayes5598@aol.com
Honors, Awards & Publicity	Ray Schmitt	(631) 585-6800	(631) 471-4950	therevrgs@aol.com
Nominating	Michael Gerazounis, P.E.	(516) 482-3207	(516) 482-3790	mgerazounis@mgjassociates.com
CRC General Chair	Alan Goerke, P.E. Frank Morgigno	(631) 331-0215 (631) 331-0215	(631) 928-4625 (631) 928-4625	ag@atiofny.com fm@atiofny.com
Reception and Attendance	Nancy Roman Carolyn Arote	(516) 556-4800 (516) 556-4800	(516) 256-3299 (516) 256-3299	nroman@airdist.com carote@airdist.com
Public Relations & Engineering Joint Council of LI	Richard E. Gerbe	(516) 484-1020	(516) 484-0926	reg@leapc.com
Golf Outing	Alan Goerke, P.E. Craig D. Marshall, P.E.	(631) 331-0215 (203) 261-8100	(631) 928-4625 (203) 261-1981	ag@atiofny.com cmarshall@accuspecinc.com

Editor's Note: The appearance of any technical data, editorial material, or advertisement in this set of publications does not constitute endorsement, warranty or guaranty by ASHRAE of any product, service, procedure, design, or the like. ASHRAE does not warrant that information is free from errors, and ASHRAE does not necessarily agree with any statement or opinion in this set of publications. The entire risk of the use of any information in this set of publications is assumed by the user. Statements made in this publication are not expressions of the Society or of the Chapter and may not be reproduced without special permission.

President Message (Cont'd. from Page 1)

I want to recognize all the fellow engineers who work behind the scene planning and coordinating the technical activities for this year's program. They are this year's incoming Officers, Board of Governors, and Committee Chairpersons who have chosen to dedicate their personal time to serve you, without asking anything in return. I am proud to lead this group of engineers that have made the Long Island Chapter one of the finest Chapters in our Society. I invite you to look for their names posted in this newsletter, and to encourage you to help them if you can to carry out their plans for this year.

We all thank Andrew Braum, P.E., outgoing Chapter President, for his excellent job in raising the bar for Chapter commitment and achievement. We know that he will continue supporting the Chapter for years to come.

People are the lifeblood of any organization and we are committed to a renewed effort to improve our communication and interaction with you and other 390 Chapter assigned members, throughout the year. Please let us know if you are interested in getting closer to ASHRAE, and how we can we improve our effort to serve you.

September 14 will be our first meeting of the season, which will feature a presentation about Green Building Design. This topic, that has energized the design landscape, will be presented by John B. Rice, P.E., Partner at AKF Engineers LLP and certified LEED professional. You may find additional details about this presentation inside this newsletter. CEU's credits will be granted to attendees of this program. All our Chapter meetings are open to the public but we would appreciate your RSVP if you are not a chapter member.

Claudio Darras, P.E.
President - Long Island Chapter

Chapter Monthly Meeting - Program for 2004/2005

September 14, 2004 * At Westbury Manor Dinner Presentation - The Mechanical Engineer's Role in Sustainable Design & The LEED Rating Sys	February 2005 NATIONAL ENGINEERS WEEK
October 12, 2004 * At Westbury Manor ASHRAE DISTINGUISHED LECTURER Dinner Presentation - Buying or Selling, The Nuts & Bolts of Commissioning	March 8, 2005 FIELD TRIP Island Aire Facility Ronkonkoma, NY PTAC Units & Water Source Heat Pumps
November 9, 2004 JOINT MEETING WITH SMACNA-LI Dinner Presentation - TBD	April 12, 2005 * At Westbury Manor MENTOR NIGHT Dinner Presentation - VAV System Design
December 2004 Holiday Event - TBD	May 10, 2005 * At Westbury Manor REFRIGERANT NIGHT Dinner Presentation - TBD
January 11, 2005 JOINT MEETING WITH ACCA-LI Dinner Presentation - TBD	May 2005 ANNUAL CHAPTER GOLF OUTING
January 2005 ASHRAE Winter Meeting and Trade Show	June 14, 2004 * At Westbury Manor PAST PRESIDENTS & OFFICER INSTALLATION Dinner Presentation - TBD
February 2005 Joint Meeting with NYC, Bi-State & NJ Chapters (ASHRAE President Elect 2004-2005)	June 2005 ASHRAE Annual Meeting

August 2005 - Chapter Regional Conference Region I - New Jersey

PAOE FINAL POINTS TOTALS FOR 2003/2004

Congratulations to the 2003/2004 Committees for a job well done. Our chapter came in 6th place out of fifteen & received several awards at this year's CRC. We look forward to another great year!

Chapter Members	Membership Promotion Points	Student Activities Points	Resource Promotion Points	History Points	Chapter Operations Points	Chapter Programs Points	TEGA Points	Chapter PAOE Point Totals
324	270	585	758	550	448	1,235	755	4,601

September Chapter Meeting - Program

You are cordially invited to our September 2004 Meeting



Dinner Presentation

***“THE MECHANICAL ENGINEER’S ROLE IN
SUSTAINABLE DESIGN & THE LEED RATING SYSTEM”***

*Presented by
John B. Rice, P.E.
Partner, AKF Engineers*

DATE:	TUESDAY, SEPTEMBER 14, 2004		
Time:	6:00 PM – Cocktails and Hors D’oeuvres 6:45 PM – Dinner Presentation 9:00 PM – Conclusion	Fee:	\$ 30.00 Member \$ 35.00 Guest \$ 15.00 Student
Location:	WESTBURY MANOR (516) 333-7117 Jericho Tpke (South Side), 3/10 of mile east from Glen Cove Rd., Nassau County, NY. Please Contact Craig Marshall at cmarshall@accuspecinc.com for directions. <i>- Reservations requested but not required. Business attire suggested</i>		
Presentation:	<p>Topics of green building design have called into question whether conventionally designed buildings are missing the mark with respect to performance. Value-added features, termed “green,” “sustainable,” and “high performance,” can be incorporated into the design of buildings that provide for maximum operational energy savings, healthy indoor environments, and limit the detrimental impact of building construction is having on environment.</p> <p>This seminar, entitled The Engineer’s Role in Sustainable Design & the LEED Rating System will provide historical context into the evolution of sustainable design, provide a review of the LEED Rating System and delve heavily into the role of the engineer in developing sustainable projects.</p>		
About our Speaker:	<p>John B. Rice, P.E. is a licensed professional engineer and a partner with the consulting engineering firm of Atkinson Koven Feinberg (AKF) Engineers. He has practiced at AKF Engineers for the past 11 years and has 19 years experience in the HVAC industry. Mr. Rice is a LEED Accredited Professional and specializes in the design of HVAC systems for mid-size to large commercial projects including educational facilities, libraries, athletic facilities, and theaters. Mr. Rice places special emphasis on his strengths of systems analysis, energy analyses and report writing.</p> <p>Mr. Rice studied mechanical engineering at Columbia University’s School of Engineering and Applied Science and holds a Bachelor’s of Mechanical Engineering degree from New York Institute of Technology.</p> <p>Mr. Rice is a Past-President of the New York Chapter of ASHRAE and currently presides on the Board of Governors.</p>		

ASHRAE CHAPTER OFFICER INSTALLATION CEREMONY

The 2004/2005 Officer Installation Ceremony took place at our June meeting held on 6/8/04 at the Westbury Manor: Present at the meeting were: Lynn G. Bellenger, Claudio Darras, Craig Marshall, John Nally, Steve Giammona, Steve Friedman, Rich Gerbe, James Hayes, Andrew Braum, Alan Goerke and Frank Morgigno.

Ceremony called to order by Lynn G. Bellenger, P.E.:

Fellow members and guests, it is my pleasure and honor to install your chapter officers this evening. The Long Island Chapter of the American Society of Heating, Refrigerating and Air-Conditioning Engineers (ASHRAE) is part of a distinguished engineering society. Organized to advance the arts and sciences of heating, refrigerating and air-conditioning, for the benefit of mankind, ASHRAE holds a preeminent position of leadership in our industry and is admired and recognized around the world.

Thousands of members contribute their time and talent to meeting ASHRAE's goals. Many ASHRAE members who have made substantial contributions to the society are here tonight. The officers and board of governors of the chapter, who are about to be installed, are accepting an important responsibility to serve us during their term of office.

You have elected them to their offices. You also have a responsibility to help them in the conduct of the affairs of this chapter. Reaching ASHRAE's goals requires the coordinated effort of the members of your chapter. Participation in chapter and Society activities will reward you in your knowledge of the industry, your professional growth, and your service to your community.

It is, therefore, your responsibility as members to provide your time and talent to serve when called, and to contribute your interest, ability and constructive criticism to the building of a better chapter and Society serving the general public and the engineering profession.

The authority for running the Long Island Chapter is delegated to the officers and governors who are elected by the members.

Tonight, it is my privilege to present, install and invest those who are to serve your chapter for its next society year.

President

Claudio Darras, the general leadership of the chapter is entrusted to you.

You will act as chairman of the board of governors, act as chief executive officer, and be an ex-officio member of all committees. Through your power of committee appointment, you will give direction and leadership to all areas of chapter activity.

As chief executive of the chapter, it will be your responsibility to see that the Policy directives of the Society and your board of governors are carried out.

Above all, you are the one to whom the members of the chapter can and will direct their suggestions and criticism of chapter policies and activities, and you must be responsive to their needs.

The privilege of service as a chapter president of this Society carries with it a great honor, a real responsibility and a lot of hard work. Do you promise to fulfill the duties and responsibilities of your office as specified in the Manual for Chapter Operations?

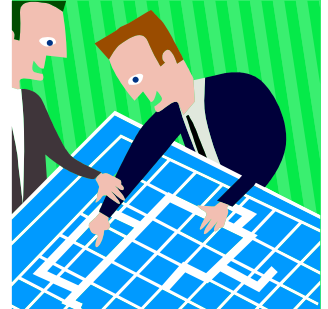
I know you will discharge your duties well and wish you much success and happiness in your term of office. I am especially pleased on behalf of the members of ASHRAE to install you as Chapter president.

Student Activities - Getting Started

This is my first year involved with student activities and it looks to be a busy time. ASHRAE Society has, and is making a big effort to spark the interest of our youth and encourage them to pursue a career in HVACR. We're not talking just college level activities here, but a full court press from K to 12, college and beyond. Society has created a number of presentations, demonstrations, contests and of course scholarships to feed the need. Traditionally our chapter's involvement has been at the college level but this year we are reaching out to the young as well. I would ask anyone who may be involved with K to 12 activities either through school, scouting or other similar interests to consider having our student activities committee come in for a show and tell. Also, if any of our consulting engineers are or have used students in your office for work assistance please let us know.

For our existing student members we urge you to continue with your participation in ASHRAE and please take advantage of the resources available to you from both Society and our local chapter. Need a mentor? Give us a call. That's all for now folks. In the near future we will be bringing you news of the events we have planned for this year, but for now we are just getting started.

John Nally
Student Activities Chair



Membership

Welcome back to what I hope is going to be an exciting year for our chapter. One of our main goals for the year is to increase membership.

We are trying to attract more members to our new meeting location at the Westbury Manor that I hope everyone has found to be a good move and a nice facility. We are also trying to get interesting topics and presentations for the upcoming year.

Our first membership night is scheduled for November. I hope that some of the members, who have drifted away from us in recent years, come on back, to see some old friends, make some new ones and see the changes we have made.

To all of our members, please encourage fellow colleagues to attend a meeting and JOIN ASHRAE!!

Steven Giammona, P.E.
Membership Chair



Long Island Chapter - Past Presidents

1958	H. Campbell, Jr. PE	1981	Robert Rose, PE
1959	Clyde Alston, PE	1982	Timothy Murphy, PE
1960	Sidney Walzer, PE	1983	Leon Taub, PE
1961	Sidney Gayle	1984	Raymond Combs
1962	William Kane	1985	Edward W. Hoffmann
1963	Louis Bloom	1986	Jerome T. Norris, PE
1964	Milton Maxwell	1987	Abe Rubenstein, PE
1965	Will Reichenback	1988	Michael O'Rourke
1966	Joseph Minton, PE	1989	Mel Deimel
1967	Irwin Miller	1990	Robert Rabell
1968	Walter Gilroy	1991	Gerald Berman
1969	Charles Henry	1992	Donald Stahl
1970	William Wright	1993	Ronald Kilcarr
1971	Louis Lenz	1994	Gerald Griliches
1972	Ronald Levine	1995	Walter Stark
1973	Henry Schulman	1996	Joe Marino
1974	Myron Goldberg	1997	Norm Maxwell, PE
1975	John N. Haarhaus	1998	Alan Goerke, PE
1976	Richard K. Ennis	1999	Frank Morgigno
1977	Kenneth A. Graff	2000	Michael Gerazounis, PE
1978	Evans Lizardos, PE	2001	Ray Schmitt
1979	Albert Edelstein	2002	Steven M. Stein, PE
1980	Ralph Butler	2003	Andrew Braum, PE

History - CRC Now & Then

A few weeks ago our chapter hosted the Region 1 CRC Meeting. This is an annual event where all the chapters in our region get together to discuss Society and local ASHRAE issues. Each chapter in the region gets a turn at hosting the event and this is the third time in our Chapters history that we have had the pleasure of playing host. There is a considerable amount of work (several years of effort) involved in the planning and execution of this event. Our Chapter's CRC committee volunteers managed to make this a successful meeting and as they say, its history now. I thought it might be interesting to compare this past recent CRC to the events we hosted in the past. Lets have a brief look.

2004 CRC – Held at the Wyndham Wind Watch Hotel. A three-day event beginning Thursday with registration, a golf outing and an evening wine reception. Continued on Friday with a morning caucus and business meeting, afternoon technical sessions and the president's dinner in the evening. Wrap up on Saturday with the executive session, committee workshops, awards luncheon and afternoon business meeting. Registration cost \$ 300.00 for a member attending the full conference and the cost of the hotel was \$ 139.00 per night.

1989 CRC – Held at the Royce Carlin Hotel. A three-day event beginning Thursday with registration, morning technical symposiums, golf, fishing, and an evening cocktail party. Continued on Friday with a morning caucus and technical session, afternoon business meeting and workshops. Dinner cruise in the evening. Wrap up on Saturday with committee workshops, business meeting, executive session and awards dinner. Registration cost \$ 85.00 for a member attending the full conference, excludes dinner cruise and activities costs. The cost of the hotel was \$ 99.00 per night.

1975 CRC – Held at the Harrison House Conference Center. A three-day event beginning Friday with registration, a cocktail reception and a late evening caucus. Continued on Saturday with a morning business meeting and afternoon workshops. Evening dinner with a guest speaker. Wrap up on Sunday with a morning caucus, business meeting and awards luncheon. Registration cost \$ 25.00 per day for a member plus a \$ 7.50 flat fee. The cost of the hotel was \$ 52.00 per night.

It would appear that the amount of business conducted during the meetings has increased a little over time. More pleasure activities have been added and without saying, a significant rise in cost has occurred between now and then.

John Nally - Chapter Historian

Ronald Spinelli, Chapter Member Passed Away at 67:

The Board of Governors and chapter members offer their deepest condolences to Mr. Ronald Spinelli's family. The following was taken from Newsday's Friday, August, 6th Edition:

Ronald Spinelli, a leader in the sheet metal industry and a man who thoroughly enjoyed life, died Sunday at his Oyster Bay Cove home of mesothelioma, a cancer caused by asbestos. He was 67.

"He was an adventurer," said his wife of 46 years, Patricia. "He always found new things to do or build." A pool and gazebo he had commissioned for his home were featured in the Pool and Patio special section of Newsday in May 1984.

Spinelli was born in Far Rockaway in 1936. After graduating from Alexander Hamilton High School in Brooklyn in 1955 and completing an apprenticeship program, he started his career as a sheet metal worker. He went on to become influential in the industry, serving as president of the Sheet Metal Air Conditioning Contractors' Association's Long Island Chapter from 1976 to 1978 and being named to that association's Hall of Fame last year.

Spinelli founded Anron Sheet Metal in 1965. He was president of the North Babylon-based firm until he died. "He ran it like it was his second family," said Tom Luerssen of Medford, 49, Spinelli's partner at Anron. "It was an open door. People always had the opportunity to move forward."

Son Rick Spinelli, 44, current trade association chapter president and owner of Bryant Air Conditioning, also in North Babylon, said his father was an innovator who always wanted to use the latest technology for his business. "Whether the equipment worked or didn't work, he found a way to make it fit."

In addition to his wife and son, Spinelli is survived by two daughters, Patricia Ann Spinelli of North Babylon, and Marianne DiGiuseppi of Dix Hills; three brothers, Michael of West Palm Beach, Fla., Dennis of Valley Stream and John of Woodbury; a sister, Lorraine Palazzolo of Beverly Hills, Fla.; and five grandchildren.

ASHRAE CHAPTER OFFICER INSTALLATION CEREMONY (Cont'd from Page 5)

We will now proceed to present your other officers and members of your Board of Governors.

President-Elect

Craig Marshall, as principal assistant to the president, you will assume his role should the president be unable to attend a chapter meeting or board meeting, and will perform such other duties as may be delegated to you. Do you promise to fulfill the duties of the office as specified in the Manual for Chapter Operations?

It is my pleasure to install you in the office of president-elect.

Vice President

John Nally, you will act as assistant to the president. Do you promise to fulfill the duties of the office as specified in the Manual for Chapter Operations?

It is my pleasure to install you in the office of vice president.

Secretary

Steve Giammona, it will be your responsibility to keep records of meetings, attend to correspondence and be an aide to the senior officers. Do you promise to fulfill the duties of the office as specified in the Manual for Chapter Operations?

It is my pleasure to install you in the office as chapter secretary.

Treasurer

Steve Friedman, it will be your duty to receive all monies, pay all authorized accounts and to give due accounting financially whenever you are called upon. Do you promise to fulfill the duties of the office as specified in the Manual for chapter operations?

It is my pleasure to install you in the office as chapter treasurer.

The Board of Governors, members of the board of governors.

Rich Gerbe
James Hayes
Andrew Braum

Because of your demonstrated interest and activity in society affairs, your Fellow members have elected you to represent them on the board of governors of the chapter. It will be your individual responsibilities to meet as a board, to deliberate and take action on all matters that come before you.

Since the Board of Governors is the governing body of this chapter, it is an honor and a privilege to serve on it, and it is my pleasure to welcome you to this activity of the society, and to install you as the officers and members of the Board of Governors of the Long Island Chapter of ASHRAE.

Ladies and Gentlemen, these are your officers and board of governors for the 2004-05 Society year. They deserve your unwavering support.

Congratulations!

Lynn G. Bellenger, P.E.
Director and Regional Chairman
ASHRAE Region 1



Resource Promotion

I would like to begin my year as Resource Promotion Chairman by congratulating Steve Friedman on the great job he did last year. Steve collected over \$10,000 for our chapter which exceeded our goal of \$9,600. He set a high bar for me to match.

I also want to thank all the individual and corporate contributions made by our membership and friends over the past year. The funds raised are the lifeblood of an organization that sets the standards in our industry without which we may still be achieving cooling by opening windows and heating by huddling around the fireplace. Okay, I'm sure we would be better off than that but it is the research funded by ASHRAE (with your help) that results in innovations that make systems operate more effectively and efficiently.

For personal donations, your tax deductible contributions can be made simply by entering an additional amount on your membership renewal form. Otherwise corporate and individual donations can be sent to my attention at the address below, via check written out to ASHRAE Research. I will forward it to the society.

Your contributions can be mailed to:

Mr. Peter Gerazounis
ASHRAE Resource Promotion Chairman
c/o MGJ Associates
100 West 32nd Street, 4th Floor
New York, NY 10001

Thanks for your support!

Peter Gerazounis, P.E.
Resource Promotion Chairman

Chapter Technology Transfer

NEW NAME- SAME GOAL

TEGA: Technical, Energy and Government Affairs committee has been changed to the Chapter Technology Transfer Committee (CTTC). The name may be different but the objective is the same. The scope of this committee is to transfer current and relevant information throughout the HVAC&R industry, develop and maintain high quality and readily available tools to enable chapters to offer information and attractive industry related information and programs to all target segments and to maintain a committee structure that supports effective and enthusiastic activities by its volunteer members.

The Long Island chapter has set some aggressive goals this year and these goals cannot be reached without your support. In order to better serve the members of the chapter and to help in societies goal of advancing the science of HVAC your participation is critical. There are numerous ways to get involved. One way is by joining the chapter technology transfer committee. New members are always welcome and a few positions on the CTTC are currently vacant.

The CTTC is encouraging all firms to submit award applications for the Ashrae awards program. This is an easy way for the chapter to gain notoriety and for firms to demonstrate their abilities by submitting their favorite projects and to recognize the achievements of your firm and its employees. These awards included the Milton Garland award, Dan Mills award, Governmental Activities award and Technology awards. Please log on to www.ashrae.org for award descriptions and for the short form applications.

Once again this year we are planning the December Islander Game holiday event. This event was a great success last year. The satellite broadcast event last spring was also a great success and will be repeated this year. Much was learned at these two first time events and this year they will both be certainly improved upon.

Cont'd. on Page 10

TEGA (Cont'd. From Page 9)

The CTTC has begun establishing an Ashrae Library for technology transfer. The Library will be a source for borrowing Ashrae position papers, standards and handbooks, design manuals, codes, technical papers and more. This can be an excellent way to consolidate information and provide a resource for those unique questions that sometimes arise. This technology transfer will be available at the monthly meetings and requests for information can be made throughout the month. In order for this to be successful, members are asked to donate any books, manuals or materials relating to Ashrae or the HVAC/R industry.

If you are interested in getting involved or need additional assistance I can be contacted via telephone at Lizardos Engineering tel. **516 484-1020** or by e-mail at **reg@leapc.com**.

A TURN TO "GREEN BUILDING"

Most people see large SUVs as the world's gas-guzzlers, but fail to realize that conventionally constructed buildings are extreme energy users, marred by high utility costs as well as poor ventilation. But construction methods are changing as companies, government agencies and academic institutions begin aggressive adoption of "high performance", "sustainable" or "green" building techniques.

The differences are noticeable in the construction, engineering and design processes, which aim to reduce energy consumption and expenditures, cut harmful chemicals' impact on the environment and boost workers' health and productivity -- all without substantially adding to upfront costs.

Companies such as PNC Financial Group and Starbucks are among those investing in making their buildings more worker- and earth-friendly. "The perceived value of green buildings is going up and the financial costs are going down," said Gregory Kats, principal with Capital E, a consulting firm for clean energy and technology. "We expect this trend to continue to grow very rapidly."

Some firms see it as a way to hit the "triple bottom line," benefiting the environment, the economy and local communities, according to Tom Paladino, a Seattle-based consultant for green development.

About 4 percent of new U.S. commercial construction -- or 180 million square feet -- is registered or certified as officially green, up from 1 percent in 2001, according to the United States Green Building Council, a nonprofit group that certifies green buildings according to certain standards.

With more vendors turning out green products, many companies no longer have to pay more to reap long-term gains. A couple of years ago, there were maybe two green carpets made. Now there are hundreds.

Yet the biggest expenditure companies face in going green appears to be switching strategies. Those that make mid-course corrections after construction begins may end up paying more. Late adoption of green in the design and development process will cost you more, and 1 percent to 2 percent is sort of the industry's conventional wisdom.

The United States Green Building Council certifies green buildings through their rating system. The USGBC rating system evaluates a building and gives points based on 5 key design aspects including, sustainable sites, water efficiency, energy and atmosphere, material resources and indoor air quality. The indoor air quality section references Ashrae Standards 90.1 Energy Guide, Ashrae Standard 62, Ventilation for acceptable indoor air quality, and Ashrae Standard 55, thermal comfort.

Richard E. Gerbe
Chapter Technology Transfer Committee Chair

CRC 2004

The CRC is over. It took a lot of work from various committees to plan all the activities and events for the meeting. Everyone that attended enjoyed the conference. In spite of the hotel name change the meetings went smoothly.

We received a lot of compliments from the ASHRAE attendees from different chapters and from the Society representatives.

Once again, I would like to personally thank all those who helped in planning and running the conference:

Budget/ Finance: Don Stahl, Peter Gerazounis, Joe Marino

Hotel: Joe Marino, John Mazza, Ray Schmitt

Golf Outing: Frank Morgigno

Wine Reception/ Catering/ food & beverage service: Joe Marino, Mike Gerazounis, Steve Giammona

Entertainment and Audio Visual: Craig Marshall

Mailings/ printing/ publicity/ website: Steve Friedman, Claudio Darras

Gifts- Registration and Dignitaries: Ray Schmitt, Joe Marino

Companion Activities/ Transportation/ Hospitality: John Nally

Registration & Information: Steve Giammona, Andrew Braum, Carmela Rosales, Joe Marino, John Mazza, Don Stahl

Fund Raising: Evans Lizardos, Don Stahl, Andrew Braum, Mike Gerazounis

Employer Recognition: Andrew Braum, Carmela Rosales



**Long Island Chapter
Board of Governors, Committee & Members**

Special Thanks: Victor Goldschmidt and Evans Lizardos for speaking at the tech sessions on Friday afternoon. Lynn Bellenger, DRC, for attending our CRC planning meetings and advising us on the details of the event.

Please visit our local chapter website for additional pictures of the CRC.

Alan Goerke, PE
CRC Co-Chair

Region 1 CRC 2004 Sponsors - A Special Thank You To This Year's Sponsors:

PLATINUM Level Contributor of \$1,000.00

AKF Engineers
Applied Technologies of New York
Jaros, Baum & Bolles Consulting Engineers
JM Haley Corporation
Lizardos Engineering Associates, P.C.
MGJ Associates

GOLD Level Contributor of \$500.00

American Power Conversion
AMA Consulting Engineers, P.C.
Baltimore Aircoil Company
Miller Proctor Nickolas, Inc.

SILVER Level Contributor of \$250.00

Accardi Companies representing Vulcain Alarms
ADE Systems, Inc.
BJLJ Engineers & Architects, P.C.
Cameron Engineering & Associates, LLP
Greenman-Pedersen, Inc.
Lakhani & Jordan Engineers
LIPA
Modine/Wales-Darby, Inc.
Taco/Wales-Darby, Inc.

BENEFACTOR Level Contributor of \$100.00

Bladykas Engineering, P.C.
Bowne AE&T Group
Concessi Engineering, P.C.
Marietta Automated Systems

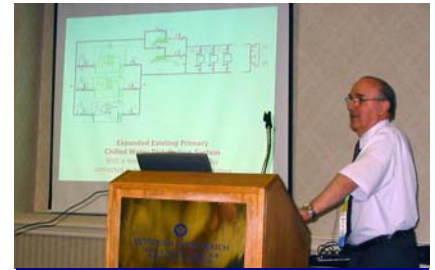
CRC 2004 - Technical Session Recap

The Long Island Chapter hosted the ASHRAE Region 1 Northeast Chapter Regional Conference (CRC) from August 19th to 21st. This event is held on Long Island once every 15 years and it was a great success thanks to Alan Goerke, P.E., Frank Morgigno and their CRC planning committee.

The CRC provides a setting for technical, education, leadership training and business meetings for board members of chapters in the region.

On Friday August 20th the Technical Program of the CRC was presented to over 55 engineers from the Long Island Chapter and Region 1.

There were two presentations given, one from Evans J. Lizardos, P.E. who gave an exceptional technical presentation on Innovative Airside and Waterside Systems Designed to Conform to ASHRAE 90.1 and Improve IAQ. He introduced an inventive airside design, which controls humidity to prevent mold growth while exceeding ASHRAE Energy Standard 90.1. The waterside design demonstrated methods for increasing the capacity of a chilled water plant while maintaining and expanding the existing piping distribution system.



Evans J. Lizardos, P.E.



Victor Goldschmidt, Ph.D.

The Second speaker was Victor Goldschmidt, Ph.D. Victor, an ASHARE Distinguished Lecturer, impressed the crowd with his entertaining and enlightening presentation on Air Conditioning: A Look Into the Past and a Guess Into the Future.

The only regret we have with the Technical Program is that we did not videotape these excellent speakers.

*Richard E. Gerbe - CTTC
Craig Marshall - Programs and Special Events*

CRC 2004 - Chapter History Displays



Boston



Connecticut



Granite State



Long Island



Maine



Niagra Frontier



Northeast



Rochester



Twin Tiers

CRC 2004 - Long Island Awards Section



Alan Goerke, P.E. and Frank Morgigno, 2004 CRC Chairman received Certificates for CRC General Co-Chair.



Liset Pena, Newsletter Editor, received Black Ink Newsletter Award.



Andrew Braum, P.E. 2003/2004 LI Chapter President received two (2) awards: PAOE, Honor Roll Special Citation & Honorable Mention Chapter Performance.



Evans J. Lizardos, P.E., past LI Chapter President received ASHRAE Region 1 2003-2004 Technology Award.



Steven Friedman, 2003/2004 Resource Chairman received Resource Promotion Award.



**ASHRAE
LONG ISLAND CHAPTER**

CLASSIFIEDS

**As a Courtesy to all Long Island Chapter Members,
All Classifieds Ads Submitted to the Newsletter will be Free of Charge.**

If you would like to place an ad advertising job opportunities or if you would like to advertise that you are looking for employment please contact our chapter's Treasurer, Mr. Steve Friedman via email at sfriedman@mgjassociates.com or at 212-643-9055 for further details.

- SAMPLE -

Senior Engineers/Project Managers: Consulting Engineering Firm seeks exp self-starters to join its team of highly skilled & dedicated professionals! We are looking for motivated Mechanical, Electrical, Plumbing & Fire Protection Engineers, Project Mgrs and Sr Project Mgrs...

PLACE YOUR AD HERE!

- SAMPLE -

Sales Engineer Wanted: Manufacturer rep firm and systems provider seeking a sales engineer with an HVAC background. Responsibilities will include calling on owners and consulting engineers in the Long Island and New York City Area....

PLACE YOUR AD HERE!

ADVERTISEMENTS



DOUGLAS G. VALERIO

MASON EAST, Inc.

Manufacturer's Representatives for
Mason Industries, Inc.
The Metreflex Company • Weiss Instruments, Inc.

631/254-2240 307 B Suburban Avenue
Fax 631/254-2199 Deer Park, NY 11729
215/633-8355 Two Neshaminy Interplex, Ste 205
Fax 215/633-8356 Treviso, PA 19053



FUTURE ENVIRONMENT DESIGNS, INC.

INDUSTRIAL HYGIENE CONSULTANTS & ENVIRONMENTAL TRAINERS
Asbestos, Lead, & OSHA Compliance Training,
Indoor Air Quality Surveys Including Air Monitoring & Testing For
Chemicals, Microbiological and HVAC Related Problems, HVAC Surveys & Assessments,
Indoor Air & Environmental Management Programs, OSHA Compliance Services

Tel: 516-364-9621 • Fax: 516-364-9710
E-mail: angel@futureenv.com • Website: www.futureenv.com

575 Underhill Blvd., Suite 128 • Syosset, NY 11791

RICK GASKA
152 41st Street
Brooklyn, NY 11232
718-832-7900
Fax: 718-965-9675

GILMOUR SUPPLY CO., INC.
An Affiliate of DAVIDSON PIPE SUPPLY CO., INC.

180 Manne Street
Farmingdale, NY 11735
516-694-2800
Fax: 516-694-7740



• HEATING & AIR CONDITIONING
• SHEET METAL • SERVICE

440 WYANDANCH AVENUE, N. BABYLON, N.Y. 11704-1590
(631) 643-3433 Ext. 310 FAX (631) 491-6983
Email: RS@anronac.com

**PLACE
YOUR
AD
HERE**

TEL (631) 218-8022
FAX (631) 218-8023



**BEST
CLIMATE CONTROL CORP.**
75 ORVILLE DRIVE
BOHEMIA, NY 11716

AIR CONDITIONING
SYSTEMS

MICHAEL O'ROURKE



JAMES CASE

GIL-BAR INDUSTRIES

(718) 965-6600
FAX (718) 965-6634

141 FORTY-SEVENTH STREET
BROOKLYN, NY 11232

Frank D. Morgigno - CEO/COO fm@atiofny.com



415 Oser Avenue • Hauppauge, NY 11788
Tel: 631-331-0215 • Fax: 631-928-4625
www.atiofny.com

BUSH WHOLESALERS

MANUFACTURERS REPRESENTATIVE & DISTRIBUTOR

**Air Diffusion Products
Fire & Smoke Control Devices
Variable Volume Terminal Units
Louvers & Dampers**

PHONE 718.624.5900 FAX 718.624.2505

**PLACE
YOUR
AD
HERE**



Business Solutions

Harold C. Smith, Jr., P.E.
Chief Engineer

KeySpan Engineering Associates, Inc.
201 Old Country Road
Suite 300
Merrick, NY 11737-2725
Tel 516 512-7301
Fax 516 512-7310
www.keyspanassociates.com



STEVE BERGMAN

TWINCO SUPPLY CORP.
TEMPERATURE CONTROLS
MOTOR STARTERS
PANEL DESIGN & FABRICATION
HVAC SUPPLIES

55 CRAVEN STREET HUNTINGTON STATION, NEW YORK 11748-2143
(631) 547-1100 NYS (800) 794-3188 FAX (800) 926-TWIN
www.twinco.com

ADVERTISEMENTS



John Knowles Ray Schmitt
David Van Wicker



2910 Express Drive South
Islandia, New York 11749
(631) 585-6800 (718) 895-0410
(212) 912-1902
Commercial FAX: (631) 471-4950

Visit our website: www.walesdarby.com
e-mail us at info@walesdarby.com



Eric M. Berkowitz
Managing Partner

989 Avenue of the Americas, New York, N.Y. 10018
Tel: 212 947-4000 Fax: 947-5003 e-mail: emberkowitz@mcquayny.com



Walter Stark
President

Nautica Dehumidifiers, Inc.
200-19 East Second Street, Huntington Station, NY 11746
Phone: (631) 424-8030 • Fax: (631) 381-8241
info@nautica-dehumid.com • www.nautica-dehumid.com

BERNE & BOB LEVENTHAL, INC.
BOB LEVENTHAL

GOVERNOR CORP.
ABB - VFD'S
CHICAGO BLOWER

KING CO.
CLIMATE CRAFT
COIL MASTER

Two Terry Lane
Wantagh, NY 11793

PH 516 826-5270
FX 516 826-5277



www.frigidyne.com

AIR CONDITIONING, HEATING
DUST, FUME, AND MIST COLLECTION
TEMPERATURE AND LIGHTING CONTROL

ANDREW S. BRAUM, P.E.
asb@frigidyne.com

(516) 785-9000
FAX: (516) 785-9148
1924 BELLMORE AVE.
BELLMORE, NY 11710



APOLLO H.V.A.C. CORPORATION

225 N. Fehr Way, Bayshore, New York 11708
631-242-8787 Fax: 631-242-8031

Mechanical Contractor, Design Build & Plan Spec.
www.apollohvac.com



VOICE: 212-685-7077 FAX: 212-685-4777
chimneydesignsolutions.com



288 Middle Island Road, Medford, NY 11763



631-491-1300
FAX 631-491-8551

Ultimate Power Inc.

INDUSTRIAL BURNERS • BOILERS
GAS • OIL • BURNER SERVICE • A/C & INSTALLATION
ELECTRONIC CONTROLS
ENERGY CONSERVATION SYSTEMS
MECHANICAL CONTRACTORS FOR OVER 33 YEARS

RONALD MILANO 45 NANCY STREET
WEST BABYLON, NY 11704-1408
EMAIL: RMILANO@ULTIMATE-POWER.COM

SIEMENS

Siemens Building Technologies, Inc.
Landis Division

50 Orville Drive
Bohemia, NY 11716

Tel: (516) 218-1000
Fax: (516) 218-1009
melvin.deimel@us.landisstaefa.com

Mel Deimel
Sr. Sales Engineer

**PLACE
YOUR
AD
HERE**

SYSTEMS TESTING & BALANCING, INC.

Air & Water Balancing
Engineering

Steven P. Carroll, PE
President

Design Analysis
Building Surveys

650 North Country Road
Suite E
St. James, NY 11780

631.584.5410
Fax 631.584.5411
balancer@optonline.net



PENN VENTILATION

BARRY BLOWER

NAILOR INDUSTRIES

(Tel) 718.624.5900

(Fax) 718.624.2505



Established 1959

County Fair, Air Conditioning Corporation

233 GRAND BLVD • WESTBURY, NY 11590-3599
(516) 997-5656 • (718) 347-7808 • FAX (516) 997-5741
choigerson@countyfair.com • mathan@countyfair.com

CARL HOLGERSON
Owner

RONALD J. NATHAN
Owner

MECHANICAL CONTRACTORS • SALES • SERVICE • ENGINEERING

***If you would like to place an advertisement in The Long Island Sounder
please contact our Chapter Treasurer, Mr. Steve Friedman
@ 212-643-9055 for further details. Thank you.***